

Hats Off To You-JAYCEES

NATIONAL JAYCEE WEEK ★ JAN. 18-26

WEATHER

| | Min. | Max. | Precip. |
|--------------------|------|------|---------|
| Wednesday, Jan. 16 | 4 | 17 | 0.00 |
| Thursday, Jan. 17 | 8 | 24 | 0.00 |
| Friday, Jan. 18 | 9 | 41 | 0.00 |
| Saturday, Jan. 19 | 5 | 24 | 0.08 |
| Sunday, Jan. 20 | 3 | 20 | Trace |
| Monday, Jan. 21 | -5 | 18 | 0.01 |
| Tuesday, Jan. 22 | -5 | 10 | 0.02 |

ONE HUNDRETH YEAR—No. 31

16 Pages This Week

CHELSEA, MICHIGAN, THURSDAY, JANUARY 22, 1970

15c per copy

SUBSCRIPTION: \$4.00 PER YEAR

The Chelsea Standard

QUOTE

"There is never an instant's truce between virtue and vice. Goodness is the only investment in life that never fails us."
—Henry David Thoreau.

District Court Moves into Old Bank Building

Chelsea's District Court moved down the street Tuesday, Jan. 6 into the newly remodeled former Chelsea Bank building, and despite several finishing touches, is open for business, according to county official William Day.

"The court benches haven't arrived yet, and special light fixtures are still on order," noted Day, "and there is some exterior work that will be completed when the weather is better, but much of the interior work is completed and we're pleased with the results."

"One of the unique features of the new building is the conversion of the main vault area of the old bank into a holding cell for prisoners," commented Day. "The interior of the vault is the same, except for the installation of plumbing, ventilation, and heat, but the exterior area has a new opening and a new corridor," he continued.

"The main office areas have been carpeted, as have the court rooms. Judge Edward Deake, in the absence of Judge Patrick Conlin, was the first to sit in the court. He seemed quite pleased with the new courthouse," commented Day.

"No remodeling of the upstairs or basement have been attempted. There will be a probation officer's quarters and an area for the prosecuting attorney upstairs near the front balcony. The back will probably be used for storage," Day noted.

Chelsea State Bank donated the old bank building to the county on Jan. 1, 1969, as a result of the bank's move into new facilities in March, 1968. The building was given to the county with the stipulation that if ever the county should decide that it no longer needed the building, that the village of Chelsea should take possession.

The county began remodeling of the building a year ago under the general contractorship of A. R. Mitchell Construction Co., Ann Arbor.

A public open house will be decided on in the future by the County Board of Supervisors.

Kiwanians Hear Talk on Peace Corps

Letty Wunglueth, Community Coordinator, International Center, University of Michigan, and George J. Coakley, international student, U-M, were featured speakers at Monday evening's dinner meeting of Kiwanis Club of Chelsea.

Both had been members of the Peace Corps Volunteers stationed in parts of Africa.

They encouraged an active quest (Continued on page five)

JC-Faculty Basketball Teams Primed

"Tonight is the Big Night!" according to the Jaycee Auxiliary which is sponsoring a benefit basketball game between the Chelsea Jaycees and the Chelsea High school faculty following the Chelsea freshman game at 8 p.m. in the high school auditorium. Proceeds of the game will go to the March of Dimes.

"The faculty is 100 percent ready and out in force," contends Faculty Coach Pat Wade. Coach Wade has a large team this year consisting of 18 members. They are Jon "The Jet" Schaffner, "Tantalizing" Paul Terpetra, "Jumping" Jim Tellman, "Killer" Ken Larson, "Fulminating" Fat Clark, "Terrible" Terry Pokela, "Battling" Bob Pursel, and "Easy" Ed Lathon.

Joining them will be "Bashful" Bert Kruse, "Charging" Chuck Waller, "Broadway" Joe Rossi, "Fancy" Phil Bareis, "Rocket" Rich Bareis, "Crafty" Carl Genske, "Dandy" Don Meyer, "Jamming" Gene Smith, "Dashing" Doug Maetz, and finally "Dunkin'" Dennis Raymond.

Coach Wade says of his large squad, "It helps to have a large team when you fast-break."

In this battle of "Super Stars" and "Never Was's," the Jaycees have chosen Walt Brown as their coach. Since they suffered a hard defeat last year in the last eight seconds of the game by only one point, they're not to be denied this year, according to Coach Brown. Brown's line-up includes "Don" "Wilt" Joseph, George "Cazzie" Staffan, Charlie "Soft Shot" Mattoff, Don "Pro" Proctor, Mike "Tinkie-Toes" Eubanks, Tom "Rubber Legs" Dunlap, Chuck "Dribble" Koenn, Tom "Tucker" (Continued on page three)



DISTINGUISHED SERVICE AWARDS were presented at the Jaycees annual Bosses Night, Tuesday, Jan. 20, at the American Legion Home, Cavanaugh Lake. Charles Cox was named outstanding young man of the year and Terry Pokela, the outstanding young educator. Pictured from left are George Heydlauff, the previous outstanding young man, Cox, Pokela, and Bruce Galbraith, the previous outstanding young educator.

Terry Pokela, Charles Cox Named Jaycee DSA Winners

Terry Pokela, 183½ Van Buren, has been named the Outstanding Young Educator of the Year, and Charles Cox, 27 Sycamore Dr., has been named the Outstanding Young Man of the Year by the Chelsea Jaycees, it was announced Tuesday, Jan. 20.

These awards are presented every other year to two young men between the ages of 21 and 35 who have served the community faithfully and unselfishly for the past year, resulting in lasting contributions to the community.

Terry Pokela, a 1961 graduate of the University of Michigan, was an educator in Dexter for two years prior to his location in Chelsea, in the fall of 1963. Pokela, who teaches biology at Chelsea High school, received a master's degree from the University of Michigan in 1969. He is a former basketball coach in Chelsea, former athletic director, and former junior class advisor.

He has worked on many projects involving youth since his joining of the Jaycees in 1967. Some of these projects include the Junior Champ track and field program; and the Punt, Pass and Kick program.

Pokela is presently the varsity club advisor and senior class advisor. He will be married Saturday, Jan. 31 to Sheryl Peppers.

Charles Cox received his bachelor of science degree from Adrian and his Master's degree in anatomy from Wayne State University. He worked on research during his studies at Wayne, which brought him to the University of Michigan dental school in the capacity of assistant to Dr. Avery of the school.

In 1969 Cox was promoted to instructor at the school.

As a member of the Kiwanis Club, Cox has been on the board of directors for two years and has served youth in the area in a number of ways. He has been local Boys' and Girls' committee chairman for the Chelsea Kiwanis Club and has served as district chairman for two years.

Cox is a member of St. Paul church, where he sings in the choir and serves as a youth counselor. He is presently serving on the long-range planning committee of his church.

He is a firm believer in Spaulding for children and has worked out a program through the Kiwanis club wherein a child

is adopted each month on a district level. Thus far he has five organizations participating: Cox and his wife, Betty, and their two children reside in Chelsea at 27 Sycamore St.

The awards were presented to these young men during the annual Bosses Night, held by the Chelsea Jaycees at the American Legion Home at Cavanaugh Lake.

After a personality adjustment hour, according to Walter Brown, Jaycee president, dinner was served which included roast beef and all the trimmings. The dinner was served by Jerry Klink.

Following a short business meeting, the awards were presented, and new Jaycees were inducted. They are Norm Wolf, Mitchell Zink, Dennis Raymond, Bob Bushroo, Tom Steele, Dave Clark, Barry Boone, Gordon Beeman, Jim Patterson, Terry Marsh, Alan Johnson.

In addition to the two major awards, several other internal awards were presented. The outstanding Jaycee for the month of December was awarded to Joe Verwey, 136 Dewey. Outstanding Jaycees for the month of January is Dave Rowe, 157 E. Summit, and Outstanding Jaycees for the quarter, covering the months of November, December, and January is Mike Eubanks, 1001 Pierce.

Master of Ceremonies during the affair attended by approximately 63 bosses and Jaycees was Bud Ringe. Some 20 invited guests were also in attendance including "exhausted roosters," those former Jaycees over the age limit for the Chelsea Jaycee organization; past DSA award winners, including George Staffan, Hal Pennington, and George Heydlauff; and a past outstanding young educator, Bruce Galbraith.

Members and guests were then entertained by the guest speaker, Tom Nowatzke, former fullback and current defensive linebacker for the Detroit Lions. Nowatzke gave a presentation, including filmstrips, on the basic plays of football and comments on the Lions.

Named for Vacancy

At the last meeting of the McKune Memorial Library Board, in December, Mrs. P. G. Schable, Jr., 600 Washington, was appointed a trustee to fill the vacancy caused by the resignation of Mrs. David Stricktor.

Schools Seek Renewal of 10.98 Mill Levy

Special Millage Election Slated Monday, Jan. 26 in Beach School

Dwight E. Beach school will be the site of the special two-year millage election to be held Monday, Jan. 26 from 7 a.m. to 8 p.m. at the request of the Chelsea Board of Education, according to Chelsea School Superintendent Charles Cameron.

A special election was requested by the board to enable the board of education to make plans for the future of the district," Cameron explained.

"We're not asking for an increase in millage over the 10.98 rate of last year, due to the expectation that the anticipated increase in state aid, as well as the state equalized valuation of the district, will offset any increase in the costs of the operation of the schools," Cameron continued, "but we are seeking to have the millage approved for two years."

"It is beneficial for us to plan early for the future of the district," added Cameron. "The early Spring is the most appropriate time for interviewing teachers, in order to hire the most capable and qualified teachers. These, as well as the present staff, want to know the program for the district, salary schedules and whether or not the present program will be continued."

Another area affected by the election are teacher contract negotiations scheduled for early March. These would be facilitated by the negotiators having a knowledge of the total income of the district, noted Cameron. "The negotiators could then do their best to settle the issues early."

Varsity Cagers Grab 2 Big League Wins

Chelsea defeated Dexter, 58-56, Friday night, Jan. 16, in a real barn burner and came back with just as exciting a game Saturday night, Jan. 17 to down Dundee, 61-57.

In the Dexter game Chelsea's defense helped build up a 33-22 advantage at half-time as they limited Dexter to 11 points each quarter. Chelsea continued to build their lead in the third quarter to 14 points before Dexter came storming back to cut the margin to one point several times in the fourth quarter.

Dexter had several opportunities to tie or go ahead in the fourth quarter, but the basket needed just would not go in. Dexter's desperation shot from 25 feet at the end of the game was short as the buzzer went off.

Chelsea was out-rebounded by a much taller Dexter team, but made up for it with a lot of hustle and a good night from the floor, plus some excellent foul shooting. Chelsea hit 41 percent from the floor making 21 of 51 field goals to equal Dexter's 21 field goals out of 72 shots, then won the game at the free throw line with 16 of 20 percent to 14 of 25 for Dexter and their 56 percent.

Chelsea was led by Dave Conklin with 16 and Art Farley with 15, who played his best game of the year.

Other scores were Jeff Hughes 12, Howie Treado 6, Jim Wojcicki 4, Ron Sweeney 3, and Wayne Welton 2.

Dave Conklin and Howie Treado led Chelsea on the boards against the tall Dreadnoughts with nine each.

Cameron also pointed to the costliness of millage elections in time and money. This could be avoided, he noted by the renewal of the millage for the two year period. He urged the electorate to support the renewal.

Beach school is located at 445 Mayer Dr.

Any registered voter, not necessarily just property owners, is eligible to vote in the operational millage election.

Absentee ballots may be obtained from either the superintendent's or the business manager's office.

Jaycees Urge Support for School Millage

At the annual Bosses Night, Tuesday, Jan. 20, the Chelsea Jaycees voted to support the proposed 10.98 two-year millage as a chapter, based on the results of the Millage Survey conducted by the Jaycees in June of 1969.

"One of the questions on the survey was: 'Would you favor a 3-to-5 year millage with the opportunity to approve or deny any increases?' 58 percent of the voters surveyed said they were in favor of such a proposal; 21 percent did not favor such a proposal; and 21 percent expressed no opinion. "These results were relayed to the school board by the Jaycees in the form of a letter, but no action was taken at that time because of the upcoming millage election and the opening of school," explained Walter Brown, Jaycee president.

"The Jaycees feel that the proposal millage package to be voted on Monday, Jan. 26 is a good one for several reasons," outlined Brown.

"1. The 10.98 mills is a renewal of what the voters approved at the last millage election. There is no increase."

"2. The two-year millage, if passed, will mean no more millage votes for two years. The Jaycees, like every one else, are tired of millage elections and feel the two-year approach is a good one."

"3. If the two-year millage is passed the school board will have to rely on state equalized evaluations and state aid to handle rising costs."

"4. If an additional millage increase is required after the pass- (Continued on page three)

Blood Bank Nets 197 Pints For Chelsea Use

The 18th annual American Red Cross-Chelsea Community Blood Bank was held Friday, Jan. 16 at the Chelsea Congregational church from 11 a.m. to 5 p.m.

"It was the best clinic we have ever had," commented Mrs. Dudley Holmes, co-ordinator of the Chelsea blood drive. "241 donors came in to give, 44 were rejected for health reasons, leaving us a total of 197 pints of blood. Chrysler was the largest factory contributor with more than 100 potential donors."

"Many people are to be congratulated for the great success of this operation. First," continued Mrs. Holmes, "the donors themselves, God bless them! Factories who gave their employees time off should be thanked. This is expensive for them and we truly appreciate it."

She noted the hard work of the "35 volunteer workers, including the Canten, which provides the (Continued on page five)



PEANUTS FOR SALE FOR THE MARCH OF DIMES! In anticipation of their part in the month-long drive for funds for the March of Dimes Foundation, Boys Scouts of Troops 425, 476, and 465 prepare for their annual peanut sale. The boys will be on the streets and at the basketball games Jan. 23-24 selling peanuts. Troop 425 and the Peanut Sales chairman, Mrs. Mitchell Zink, are pictured here with their wares. Pictured from the left is Jim Marshall, Ed Dreilman (behind Marshall), Dave Proctor, Jeff Marshall, Mrs. Zink, Jon Schenk (senior patrol leader), Mike Keller, Tim Eder, and Dennis Barker. Not pictured are Rodney Branham, Howard Schenk, Dave Murphy, and Scoutmaster Paul Garman.

Boy Scouts Preparing for March of Dimes Peanut Sale

Boy Scouts will be selling peanuts on the streets Friday and Saturday, Jan. 23-24, in an effort to raise funds for the Chelsea March of Dimes.

Participants from Troops 425, 465 and 476 will be carrying canisters for donations and attempting to sell some 37 cases of peanuts, according to Mrs. Don Proctor, publicity chairman for the Chelsea March of Dimes.

Scouts will be in three locations, near the former bank building on the Main street corners, and near Stop & Shop. Murphy's Barber

shop will be the headquarters for replenishing supplies and warming hands.

James Branham, who will soon be assuming the scoutmastership of Troop 425, is in charge of scheduling, money collection and distribution of peanuts to the scouts. Branham estimates that roughly \$200 will be collected for the March of Dimes.

Last year 25 cases of peanuts were sold.

School Board Briefs

At a regular board of education meeting, Monday, Jan. 19 present were Irwin, Storey, Powers, Hasel-schwartz, Lewis, Koenn, Hopkins, Supt. Cameron, Business Manager Mills, Principals Lane, Conklin and Assistant Principal Fauble. Many guests were also present.

Meeting called to order by President Irwin at 8 p.m.

Minutes of the Jan. 5 and Jan. 12 meetings were accepted as corrected.

Motion by Lewis, supported by Storey, to pay general fund bills of \$14,112.45. All ayes.

Patricia Gilbert and Jane Hasel-schwartz presented the Student Council survey of the dress and grooming code. The board asked the Student Council to complete their survey by giving the results of the parents' replies and then some discussion and study would take place regarding the code.

Mrs. Harat, representing the OEO office, discussed the Head

Start program for 1970. The kindergarten room at North school will be used for Headstart.

The Summer Ag program was discussed.

No action was taken on the purchase of a pickup.

A special meeting of the board of education will be held Monday, Jan. 26, at 8 p.m. in the Dwight E. Beach School Faculty Lounge.

Motion by Storey, supported by Haselschwartz, to authorize the business manager to invest Debt Retirement Funds as taxes are collected to the best interest of the school district, authorization to extend to Sept. 1, 1970. All ayes.

Motion by Koenn, supported by Storey, to give Peter Flintoft "power of attorney" to represent the school district in dealing with the IRS in regards to taxes on the High School Scholarship Fund. All ayes.

Meeting adjourned at 12:30 a.m.

The Chelsea Standard
Established 1871
Telephone GR 5-3581
Excellence Award By Michigan Press Association
1951-1952-1960-1964-1965-1966
Walter P. Leonard, Editor and Publisher

Published every Thursday morning at 800 North Main Street, Chelsea, Mich. 48118, and second class postage paid at Chelsea, Mich., under the Act of March 3, 1879.


ADDRESS CORRECTION REQUESTED

Subscription Rates (Payable in Advance)
In Michigan: One Year \$4.00, Six Months \$2.25, Single Copies \$.15
Outside Michigan: One Year \$6.00, Six Months \$3.50, Single Copies \$.20
Service men or women, anywhere, 1 year \$4.00

MEMBER
NATIONAL NEWSPAPER ASSOCIATION
Association - Founded 1885

National Advertising Representative:
MICHIGAN NEWSPAPERS, INC.
257 Michigan Ave.
East Lansing, Mich. 48823

Senator Philip A. Hart's
REPORT from WASHINGTON



★ Conclusions of Commission on Violence ...

Shake any Pentagon official awake in the middle of the night, demand to know the purpose of our military endeavors, and the unhesitating answer will be, "To guard our liberty."

True, liberty is our nation's most precious commodity. But somehow we have convinced ourselves that it really can only be threatened from the outside.

So we have ringed it with missiles and patrolled it with warships. We have even decided that our defense perimeters should be thousands of miles from our shores.

We seem to have forgotten that the lifeblood of liberty can be lost as easily through internal bleeding as by external wounds.

The National Commission on Violence, of which Dr. Milton Eisenhower is chairman and I am a member, has now ended 18 months of meetings and deliberations, studies and reports.

A most important finding: One of its most significant findings is that liberty can be diminished by violence, fear, and neglect more easily than by foreign threat.

If a citizen fears to walk in his own neighborhood at night, his liberty is certainly reduced. If fishermen and swimmers each year find less unpolluted water, their choices are diminished. If anxiety keeps a housewife from shopping downtown or attending a PTA meeting, she has certainly lost a significant measure of liberty.

For 30 years, the main preoccupations of the federal government have been national defense, the conduct of wars, the growth of the economy and the conquest of space.

These problems eat up two-thirds of the federal budget and the Commission concludes that our priorities have grown somewhat distorted. The final report says: "We solemnly declare our judgment that this nation is entering a period in which our people need be just as concerned by internal dangers as a free society as by any probable combination of external threats."

The report recommends: That the nation double its investment in the prevention of crime and law enforcement.

That the nation commit itself to ending hunger.

That there be swift and massive reconstruction of urban life because it is in the cities where the real problem of violence lies. Its recommendations are too numerous and varied to be described here although I do hope that some of you will be interested enough to get the full report from the Government Printing Office (Washington, D. C. 20401). The price is \$1.50.

And how is all this to be paid for? Well, the Commission has a recommendation on that, too. It urges that every dollar saved by our Vietnam withdrawal be devoted to domestic needs. If the war ended today, it would free \$20 billion a year—a tremendous sum compared to what is customarily spent inside our borders.

You don't have to be an accountant to realize how much more favorable the cost-benefit ratio would be if that \$20 billion could be spent here rather than there.

Will the public support it?

Some commissioners doubted that the American people will support this plan. Many Americans are not in sympathy with civil rights and most are distressed by high taxes. Maybe it's not realistic to think the "silent majority" will support a reallocation of our national resources to deal with social problems.

The Commission was optimistic. Too many of our basic freedoms are under threat, including freedom from fear, freedom of movement, freedom from harm.

And to preserve them, we'll need a lot more than missiles.

Howell Livestock Auction
The Wise Owl Says Ship to Howell
SALE EVERY MONDAY, 2 p.m.
Phone 546-2470, Bim Franklin
Mason 677-8941

Market Report for Jan. 19
CATTLE
Steers and Heifers:
Choice, \$29 to \$30.75
Good, \$27 to \$29
Ut.-Std., \$23 to \$26
Fed Holsteins, \$25 to \$27.40

Cows:
Heifers, \$22.50 to \$24.50
Ut.-Comm., \$21 to \$22.50
Canner-Cutters, \$18 to \$21
Fat Yellow Cows, \$19 to \$21


Calves:
Heavy, \$25 to \$27
Light and Common, \$22-\$25

Feeders:
Good-Choice, \$32 to \$38
Common-Med., \$26 to \$32
Dairy Cows, \$250 to \$380

MIKE'S TV ANTENNA SERVICE
Motorola Automotive Sound Systems
Winegard Home Electronics TV Antenna Systems
Insurance Claims
For Free Estimate, Call
Pinckney 878-3258 or 769-0130

INCOMPARABLE!

Scorpion! The snomobile that challenges comparison! Compare features: spacious underseat and rear storage compartments... exclusive 6-year proven track... flip-up hood!... electric start! Compare safety, dependability and performance. For incomparable fun... warm up winter with Scorpion!



Scorpion 70 The PROVEN snomobile that never lets you down

WILLIAM BERNARD
Phone 426-4518
6360 Dexter-Ann Arbor Rd. Ann Arbor, Mich.

Uncle Lew from Lima Says:

DEAR MISTER EDITOR:

Ed Doolittle reported at the country store Saturday night that they final got them forms ready for the census to be took by the first of April. Ed allowed he was glad they left out a lot of questions they thought about putting on the forms, but he was not too happy with some still in em. Ed said what bothers him about Government questions is that answers almost shore wind up in department stores and loan companies.

Some states sell tax returns to counties, for instant, allowed Ed, and then the counties make their money back by peddling em to credit bureaus and anybody that wants to check up on a feller's finances. Ed said he is sick of putting a price tag on everything from getting borned to buried, and they has got to be a stopping place for it.

There ain't no reason for a feller to tell the Government everything from the shape of his teeth to how much alimony he pays, said Ed, and he was glad to see that bill perposed that would give folks the right to see their records in credit bureaus. At least they will know what the burrow knows, was Ed's words. It could be, allowed Ed, that his reserulution to see the bright side was showing results.

Bug Hookum said all them statistics will be fed to a computer that will help figger all kinds of things, like what kind of housing and medical services the country needs. He said everthing this country knows and can find out is going to be holed in a card, and we are going to be at the mercy of the computer to read the card.

Actual, Bug said, men is taking computers better than women. He said wimmen allus lie about their age and throw off the statistics, Bug said they put a dollar sign on everthing and they figger to cross up the computer cause it can work cheaper than they will.

Farthermore, went on Bug, wimmen is putting dollar values on men. He recollected a while back where this gal wanted the Government to pay ever single woman over 25 year old \$35,000 fer losing her chancet at a husband on account of men killed in Vietnam. Bug said that prices a man, but at least that's more than the Government insurance on him in service.

Personal, Mister Editor, I am of a mind that usual a feller out-smarts himself dealing with wimmen. I saw by the papers where this judge found a feller married to two women at the same time. Instead of jailing him he made him pay alimony to both wives. I figger by this time that feller is ready to take a long walk off a short pier and cash in his \$85,000.

Yours truly,
Uncle Lew.

MONEY TROUBLE?
ONE PLACE TO PAY!
Credit Management Service
662-2965
215 South Fifth Ave.
Ann Arbor
State Licensed and Bonded



★ MICHIGAN MIRROR ★
By Elmer E. White, Secretary, Michigan Press Association

Tourists Increase

It probably comes as no surprise, but Michigan's tourist industry has grown by leaps and bounds during the past decade. The amount of money tourists spent in the state last year was exactly double of what they spent in 1959, with total spending coming to \$1.3 billion, compared to \$650 million.

Michigan not only has kept even with the national increase, it surpassed it since spending in the entire country rose only 38 percent from \$1.7 billion to \$3.2 billion.

The growth is the result of a concerted effort on the part of the state, regional and local organizations as well as heavy participation of private firms and individuals.

The total investment by the private sector over the 10-year period is estimated at \$1.6 billion by the Michigan Tourist Council.

The number of Michigan businesses directly serving tourists increased from 28,000 in 1959 to 40,000 in 1969, and these figures don't include gas stations and retail stores which derive much of their income from dollars of tourists.

The result of the increase in businesses is an increase in the number of employees in the tourist field from 100,000 to 140,000. There are many other statistics showing the increase in tourism in the state. The number of tourists visiting Michigan last year is put somewhere between 14 million and 20 million, depending on whose estimates are used.

In 1959, the total number of tourists was 9,750,000.

The total number of miles traveled on state highways jumped from 32 billion in 1959 to 50.5 billion last year.

The number of commercial airline passengers in Michigan skyrocketed from 3.6 million in 1962 to 9.3 million last year.

Sources in the Governor's office say Gov. William G. Milliken intends to attempt to put even more effort into the state's tourism business in the next year.

Milliken, when the Council is asked for a forecast, says he is "highly encouraged" by the rapid growth of tourism.

"I was highly encouraged to learn that the decade of the 1960's saw the greatest 10-year growth in tourism in the history of Michigan," he said.

"We have tremendous potential for further growth," the Governor said. "It should be possible to achieve a total expenditure of about \$3 billion in the 1970's, but before we realize this potential, we must deal with a number of problems, including highway development. We also must have adequate backing of tourist promotion."

Parochial Progresses

Michigan is far from the only state in which parochial has become a burning issue and with state legislatures reconvening across the nation in January the issue has heated up again.

Most state aid plans, including the one proposed last year by Gov. William G. Milliken, are patterned after the so-called "Pennsylvania Plan" adopted by the Pennsylvania Legislature in 1968.

It provides for the state to pay part of the salaries of parochial school teachers who instruct students in secular subjects.

The theory is that the state thus is not supporting religion, but is purchasing services.

State aid plans similar to Pennsylvania's were adopted during 1969 in Ohio, Connecticut and Rhode Island.

They were defeated, however, in 17 other legislatures, including Illinois, Indiana, Kansas, Louisiana, Michigan, Minnesota, Montana, New Hampshire, New Jersey, New Mexico, New York, North Dakota, Oregon, Vermont, Wisconsin and West Virginia.

Aid bills, rather have been or will be, introduced in all 17 of those states this year, and in several others besides. Whichever way the votes go, the issue surely will come back again and again in following years.

Currently there are more than 12,000 Catholic elementary and high schools in America.

These schools are educating about 4,860,000 children.

Enrollment has dropped nearly 700,000 pupils during the past three years, however, and additional school closings are said to be imminent in many states with large Catholic populations.

Backers of parochial say state aid is the only thing which can stop this downward trend in enrollment by alleviating the burdens caused by ever rising prices.

Opponents say the public schools could handle all the parochial school students cheaper than it

JUST REMINISCING
Items Taken from the Files of The Chelsea Standard

4 Years Ago ...
Thursday, Jan. 20, 1966—
George W. Atkinson, who served 38 years in the Chelsea Fire Department and was known as "Mr. Parade" of Chelsea for his work with community parades, died suddenly Monday while at the fire hall.

David Rowe was elected president of the Chelsea Community Fair Board at the Jan. 11 annual meeting.

Dr. David Ponitz, president of Washtenaw County Community College, in his talk at Chelsea Chamber of Commerce meeting, expressed hopes college classes would start in the fall.

Chelsea Band Boosters club reported selling a total of 1,106 fruit cakes and 5,216 candy bars in the club's fund-raising project.

started soon on supplying Lyndon township with telephone service.

Pfc. Mark McKernan, who was in the service since Aug. 31, 1943, and saw action in France, Belgium, Holland and Germany, received his honorable discharge at Camp Atterbury, Ind., Jan. 11.

Also discharged, on Jan. 13 at Great Lakes, Ill., was Russell Gardner, Em-1C.

In the 34 Years Ago column (Jan. 18, 1912): Thomas Fletcher has sold his house on Orchard St. to Samuel Bohnet; also, fire was discovered at 3 o'clock Sunday afternoon around one of the hot air registers at the Baptist church, corner Main and Orchard St., the blaze causing \$500 damage.

34 Years Ago ...
Thursday, Jan. 23, 1936—
The village has been received lights to illuminate the sliding hill on Mrs. Palmer's land on Washington St., which is being sponsored by the American Legion and many children of the village are taking advantage of the splendid sliding at this point.

Word has been received that Construction Engineer George W. Dillon will arrive in Chelsea Feb. 4 for the purpose of making a topographical survey and soil investigation of the new post office site, corner of Main and South streets in preparation for construction work to begin.

In the Hi-Light news of the Chelsea public school: In the fourth grade semester test in spelling, Elaine Schmidt and Summer Osterle missed only one word of the 50 words and Mary Christwell, Eleanor Harper, Felix Holbrook and Ruth Osterle missed only two.

State Highway Dept. Opens Technician Training Program

State Representative Thomas G. Sharpe (R-Howell) has announced that applications are being accepted for a three-year technician training program to be sponsored by the Department of State Highways.

Selection of 100 students will be based on a state civil service examination. Exam applications may be obtained from county clerks throughout the state, and from the Michigan Employment Security Commission and the Michigan Civil Service Commission.

Sharpe said the program will include on-the-job training and classroom study. Students will work for six months beginning in July on various jobs in the Highway Department, including drafting, design and survey, then attend one of four colleges and universities for six months.

Sharpe stated that students will be paid from \$231 to \$266 every two weeks while working, but will not be paid while attending school. High school graduates, including those of next June, 40 years old and under, are eligible to apply.

PRE-INVENTORY CLEARANCE OF FINE FURNITURE & CARPETING

Our entire floor stock of name-brand furniture and Frigidaire appliances reduced to save you many dollars.

- ★ Living Room Suites
- ★ Davenport
- ★ Chairs
- ★ Breakfast Sets
- ★ Bedroom Suites
- ★ Washers
- ★ Dryers
- ★ Refrigerators
- ★ Ranges
- ★ Dishwashers

A great variety of models available for immediate delivery.

CARPETING

MEABON'S TV, FURNITURE & APPLIANCE
1170 S. M-52, Chelsea Phone GR 5-5191

\$300 ALLOWANCE FOR ANY CAR
STARTS THURSDAY, JAN. 22nd

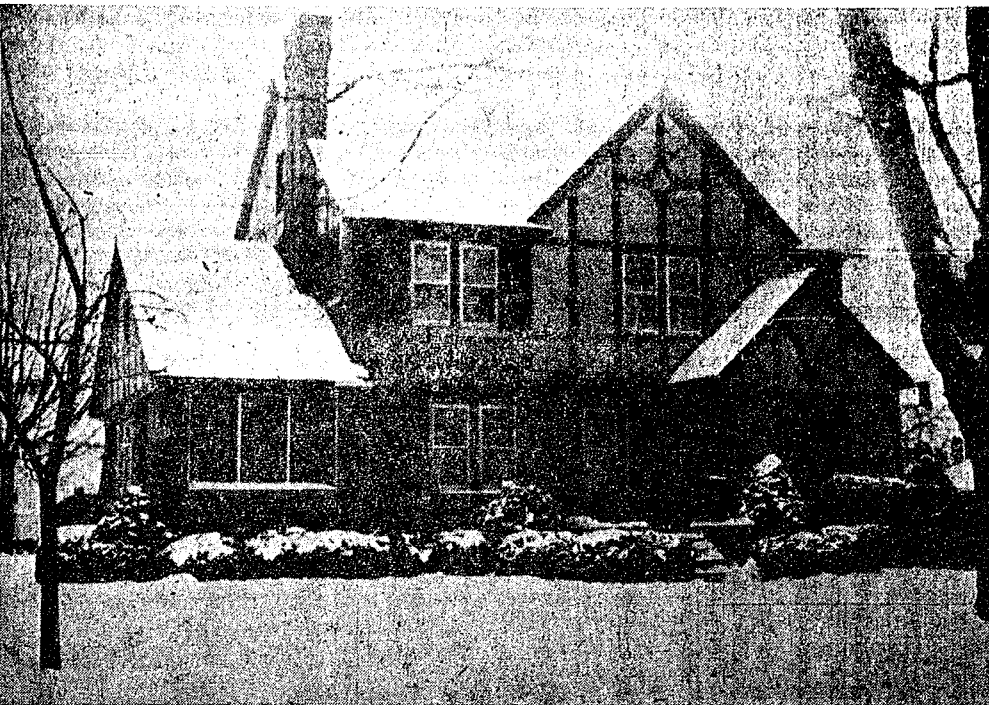
On All Cars!! \$300 Allowance REGARDLESS of Age, Make or Model. If Need Be, We Will Even Tow. This is the MINIMUM. Hundreds More, Depending on Year and Condition.

| Model | Price | MIN. ALLOW. |
|---|--------|-------------|
| '69 FORD | \$2195 | 300 |
| 4-dr. sedan, V8, Cruise-O-Matic, power steering & brakes, radio, over 4 years of factory warranty | \$1895 | |
| '68 FORD | \$1995 | 300 |
| 4-dr. Station Wagon, V8, Cruise-O-Matic, power steering, one owner. | \$1695 | |
| '67 TOYOTA | \$995 | 300 |
| 4-dr. automatic, radio. | \$695 | |
| Real economical to drive. | \$695 | |
| '67 THUNDERBIRD | \$2295 | 300 |
| Air conditioned, power windows. A clean one-owner car. | \$1995 | |
| '66 FORD | \$1495 | 300 |
| Fairlane 500 Squire Station Wagon, V-8, automatic, radio, power steering. | \$1195 | |
| '66 CHEV | \$1295 | 300 |
| 1/2 Ton Pick-Up. A real clean one owner. | \$995 | |
| '65 MUSTANG | \$995 | 300 |
| Hard Top. Look this one over. All white, black top. | \$695 | |
| '65 FORD | \$695 | 300 |
| 2-dr. Sedan. Automatic, with all vinyl trim. | \$395 | |
| '63 Greenbrier Bus | \$395 | 300 |
| Would make a good hunting and fishing car. | \$95 | |
| '63 Dodge Dart | \$295 | 300 |
| Station Wagon. First come first served. | ? | |
| '63 BUICK | \$295 | 300 |
| 2-dr. Sedan. Runs good. | ? | |

This is only a partial list of over 40 Used Cars and Trucks in stock. Our advertising budget would not permit a larger ad, so stop by and look over our large stock.

Open Mon., Wed., Thurs 'til 9 p.m. Tues., Fri. 'til 6 p.m. All day Sat.

PALMER FORD
58 YEARS OF DEPENDABLE SERVICE
On-the-Spot Financing
GR 5-3271



MEMORIAL GIFT TO CHURCH: An open house from 2-5 p.m. will be held Sunday, Jan. 25 at the new parsonage of the St. Paul United Church of Christ, according to the Rev. Warner Siebert, pastor. The new parsonage is part of a memorial gift given by Paul Schaible, Jr., and Margaret Schaible Sutton to reflect the devotion to their church of their parents, Mr. and Mrs. Paul Schaible, Sr. The public is invited to the open house at 170 Orchard St.

DETENTION CAMPS OPPOSED

The Nixon Administration has urged Congress to repeal a law authorizing establishment of detention camps used in internal security emergencies. The Emergency Detention Act was enacted as part of the Internal Security Law of 1950.

Your time is of no value to anyone but yourself; why not use it wisely?

Council Briefs

At a regular session of the Chelsea Village Council Tuesday evening, trustees present included Miller, Gorton, Musbach, Fuks, Clark and Chandler. Absent: President Pennington.

Bids were submitted from local auto agencies for a new Public Works truck.

A motion was made and approved to accept the bid of Palmer Motor Sales in the amount of \$2,445.

The recent problem of low voltage in the village was discussed. It was explained to the council that Consumers Power Co. had crews working at their substation on Garfield St., changing the size of their transformers which resulted in a temporary drop in voltage. The work is now completed and the voltage is normal.

A motion was made and approved authorizing the president and clerk to enter into an agreement with the Township of Sylvan for use of the sanitary landfill.

A motion was made and approved to accept Lanewood Subdivision No. 1 with one noted exception.

Further discussion was held regarding the proposed 1970 budget. No action was taken.

A report was made on the inspection of the railroad crossings by the Michigan Public Service Commission.

A motion was made and approved to authorize and direct the Clerk to issue checks in payment of bills as submitted.

HOME AWAY FROM HOME

The Tigers were one of only three American League teams to play better than .500 ball on the road in 1969.

Varsity Cagers Grab 2 Big League Wins

(Continued from page one)

This game started just like the Dexter game with Chelsea building up an early lead at 14-6, but Dundee came storming back with 8 for 14 from the floor in the second quarter to take a 32-29 lead into the locker room at half-time.

The third quarter was evenly matched with both teams scoring 15 to leave the score at 47-44 in Dundee's favor entering the exciting fourth quarter.

Chelsea took the lead at 52-51 on a 20-foot shot by Jim Wojcicki only to lose it again seconds later. The lead changed hands several times and was tied once in the following minutes.

With Chelsea ahead, 57-55, and Dundee with the ball and 40 seconds to go, Dundee took a shot and missed but tried to call time out as Ron Sweeney went down the floor all alone and put Chelsea ahead, 59-55. Dundee came right back and scored with 10 seconds to go and they were now down by only two points. They fouled Wayne Welton and Wayne, who had exactly the same situation Friday night against Dexter, but missed, sank both free throws with three seconds remaining to tie the game for the Bulldogs.

Chelsea was led by Art Farley who made 9 of 18 shots from the field and 3 of 3 foul shots for 21 points. He was followed closely by Jim Wojcicki with 18 points, Ron Sweeney 8, Wayne Welton 6, Dave Conklin 4, Howie Treddo 3, and Jeff Hughes 1.

The key to holding Dundee's high powered offense to 57 points was Chelsea's control of the rebounds which was led by Ron Sweeney with 12, Jim Wojcicki 8, Dave Conklin 7, Jeff Hughes 7, and Howie Treddo 6.

Chelsea is now 5-3 in the league and tied for third place with Saline, one game behind Dundee and two behind Milan.

The next league game is with Novi at Novi Friday night, Jan. 23. Then Saturday night, Jan. 24, Chelsea entertains non-league Manchester, here.

Jaycees Urge Support for School Millage

(Continued from page one)

age of the proposed two-year millage, it will have to stand on its own merits and won't be hidden in operational costs as millage increases are now. It will be up to the voters to decide whether the additional services warrant a millage increase or not.

"The 10.98 renewal for two years will give the school system enough money to operate without an increase. If an increase is required, only the increase will be up for vote. If the increase is voted down, then the only thing lost is the additional services the increase would buy. In the past, if an increase was voted down, the school system lost the renewal plus the increase. This severely hampered the normal operation of the school system."

Brown continued, "The Jaycees realize that the past differences between the school system, teachers and administrators have left a bad taste in the mouth of many of the residents of Chelsea school district. They also realize that many people will vote down any millage because they feel their opinion and personal feelings have been ignored. In some instances this may be true, but whatever your reasons may be, it is time for the voters to stop and think about the future of our educational system in Chelsea."

"Now is not the time to regress but to progress," he added. "The Jaycees feel that this is the first sensible millage package offered to the voters in Chelsea in a long time. We urge your support," he concluded.

Benefit Basketball ...

(Continued from page one)

Steele, Dave "Soapy" Clark, and Gordie "Buckeye" Beeman.

Tickets will be available at the door tonight. All urge support of the March of Dimes. "Besides," according to Coaches Wade and Brown, "with such great names this is an event not to be missed."

Never pay any attention to the person who knows what he says is right.

MID-STATE FINANCE CORP.

\$25 to \$1,000

For Any

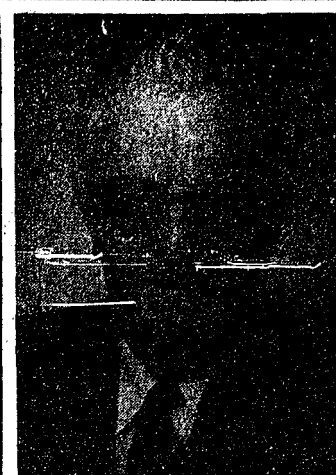
Worthwhile Purpose

See or Call
FRANK HILL
at 475-8631

111 PARK STREET
CHELSEA, MICH.



MILTON G. KENDRICK



LAWRENCE H. WALZ

Kendrick Retires as District Sales Head for Gas Company

The appointment of Lawrence H. Walz as Ann Arbor District sales manager for Michigan Consolidated Gas Co. has been announced by Jack D. Hogan, general manager. Walz succeeds Milton G. Kendrick who has retired after 28 years with the utility.

Walz, of 408 Mark Hannah Pl., Ann Arbor, was born and raised in Ann Arbor, and joined Michigan Consolidated in 1946 as a retail salesman. He was promoted to builder representative in 1958 and became supervisor of residential sales in 1964.

A past vice-president of the Ann Arbor Builders Association and trustee of the Bikes Lodge, Walz is also a member of both the Ann Arbor and Ypsilanti Chambers of Commerce, the Ann Arbor Lions Club and has been active for many years in United Fund campaigns.

Kendrick, a 1929 graduate of the University of Michigan, began his utility career in 1931, and joined Michigan Consolidated in Ann Arbor in 1936. He was named sales manager in 1938. He has been most active in University affairs, having received its distinguished Alumni Award in 1962 and serving on the board of directors of the Alumni Association from 1949 to 1952. He was president of the U. of M. Club of Ann Arbor in 1946 and secretary-treasurer of the Michigan Athletic Managers Club from 1959 to 1969.

Kendrick was secretary-treasurer of the Michigan Gas Association from 1958 to 1969, and has served on the boards or held offices in a number of civic organizations, including the Junior Chamber of Commerce, Ann Arbor Lions Club, American Red Cross, Childrens Aid Society, Michigan Week, and the Ann Arbor Chamber of Commerce. He serves on the fund raising steering committee for the new "Power Center for the Performing Arts" and is a member of the University and Ann Arbor Clubs.

Kendrick also distinguished himself and his sales department by winning Michigan Consolidated's coveted "President's Sales Achievement Award" in 1968. The award is made annually by the company to the district sales department which shows the greatest improvement over the previous year.

Kendrick of 4 Heatheridge Dr., plans to go into the property management field and continue his civic and university alumni activities.

Bible Verse Answers ...

1. Luke.
2. Isaiah 9:6.
3. The angel of the Lord to the shepherds in the field.
4. Luke 2:11.

CONSISTENT

Three Tigers—Denny McLain, winner of the Cy Young Award the past two seasons, has a combined record of 55-15 during that time.

from HISTORY'S SCRAPBOOK

DATES AND EVENTS FROM YESTERYEARS

England, Holland and Sweden concluded a triple alliance, January 23, 1668. The first Philippine republic was constituted, January 23, 1899.

Roosevelt and Churchill conferred at Casablanca, January 24, 1943. The United Nations Atomic Energy Commission was created, January 24, 1946.

The first trans-U.S. telephone call was made from San Francisco to New York, January 25, 1915.

Daniel Webster championed federal authority in the secession debate, January 26, 1830. Congress purchased Jefferson's 7,000 volume library as nucleus for Library of Congress, January 26, 1815.

U.S. aviators bombed Germany for the first time in World War II, January 27, 1943.

Commercial telephone service between New York and London was established, January 28, 1927. Hitler became chancellor of Germany, January 28, 1933.

The first woman governor of a state, Miriam Ferguson, was installed as Governor of Texas, January 29, 1925.

Former Chelsea Resident Suffers Heart Attack

Robert Bassett, formerly of Chelsea, was stricken with a heart attack recently while working in St. Paul, Minn. Bassett moved with his family to Oak Park, Ill., last fall to become assistant sales manager for Montgomery Ward.

Bassett, who is now out of the intensive care unit, is at Midway Hospital in St. Paul. He may be written to in care of his room number, 406, at Midway Hospital.

BIBLE VERSE TO STUDY

"For unto you is born this day in the city of David, a Saviour, which is Christ the Lord."

1. Who is the author of the above verse?
 2. Where may a similar verse be found in the old Testament?
 3. Who made this proclamation?
 4. Where may this verse be found?
- (Answers elsewhere on this page)

IMPROVE YOUR HOME

Local Company — With Service

- ★ Aluminum Siding
- ★ Roofing
- ★ Patio Covers
- ★ Enclosures
- ★ Awnings
- ★ Replacement Windows
- ★ Eaves Troughs
- ★ Storm Windows
- ★ Storm Doors
- ★ Trailer Skirting
- ★ Insulation

GEORGE MEYER

COMPANY

3496 Pontiac Rd., Ann Arbor. Telephone 769-7330

EXTERIOR HOME IMPROVEMENTS

George Meyer — Bob Behnke — Roy Peterson

ASK YOUR DOCTOR FOR A DOCTOR

Your pharmacist is a specialist in dispensing medicines. He has the knowledge required to safely fill any prescription your physician may call for. We carry a complete stock of medicines and health aids.

Your family physician should be the very first person you turn to for any questions about your own or your family's health. Because he is an expert on your overall health care, he is in the best position to advise you when the services of a specialist in one particular area may be required. Very often an illness symptom in one part of the body may indicate a problem that is actually elsewhere.

YOU OR YOUR DOCTOR CAN PHONE US when you need a delivery. We will deliver promptly without extra charge. A great many people rely on us for their health needs. We welcome requests for delivery service and charge accounts.

CHELSEA DRUG

24-HOUR PRESCRIPTION SERVICE
4 Registered Pharmacists
101 N. MAIN ST. PHONE GR 5-4611

AFTER Inventory Sale

FAMILY SIZE SCOPE MOUTHWASH . . . \$1.49 Value **99¢**

KINDNESS 20 HAIR SETTERS Reg. \$22.95 **\$17.43**

MODEL 20 POLAROID LAND CAMERA Reg. \$19.88 **\$17.88**

HIGH COVER FRY PANS, Teflon Coated . . . Only 2 Left Reg. \$19.88 **\$17.88**

300 COUNT PKG. SCHOOL FILLER PAPER . . . 5 Holes Wide Rules **49¢**

1 GAL. CAPACITY HOT STEAM VAPORIZERS . . . Reg. \$6.95 **\$4.99**

LADY SCHICK BEAUTY MIST HAIR DRYER Reg. \$39.95 **\$32.95**

SUPER SPECIAL

ALL GLOVES and MITTENS

Now 99¢ pr. - 2 pr. \$1.97

BUDGET-WISE STORE

Chelsea's First Discount Store

116 South Main Street Phone GR 9-1611

SUPER QUALITY

PRO

HARDWARE STORES

GREAT VALUE

RED TAG SALE

BLACK & DECKER

7 1/4" Circular Saw

Powerful 1 1/4 hp. motor zips through toughest cutting jobs.

\$34.88

Model 4131

WESTCLOX GRENADE

CHILD'S CLOCK

SPECIAL PRICE

Regular \$15.95 **\$8.88**

ELECTRIC CELEBRITY HEATER

\$8.88

ONE YEAR GUARANTEE

ALL PURPOSE UTILITY BOX

\$4.88

PROVEN

PROVEN SPECIAL

1/4" INCH DRILL

\$8.88

SPECIAL

BORG BATH SCALE

\$4.44

Special

Accurate and dependable.

TRUE TEMPER.

SNOW SHOVEL "AMERICAN"

\$1.88

Aluminum Blade Fire-Hardened Ash Handle

BLACK & DECKER

3/8" DRILL

\$9.99

Model 7100

CHELSEA PRO HARDWARE

110 SOUTH MAIN ST. PHONE GR 9-6341

IT'S EASY TO BUY-SELL-RENT- HIRE & FIND WITH

WANT ADS

Just
Call
GR 5-3581

WANT ADS

The Chelsea Standard

WANT AD RATES

PAID IN ADVANCE—All regular advertisements, 50 cents for 25 words or less, each insertion. Count each figure as a word. For more than 25 words add 2 cents per word for each insertion. "Wanted" ads or box number ads, 50c extra per insertion.

CHARGE RATES—Same as cash in advance, with 15 cents bookkeeping charge if not paid before 5 p.m. Tuesday preceding publication. Pay in advance, send cash or stamps and save 15 cents.

DISPLAY WANT ADS—Rate, \$1.10 per column inch, single column width only. 8-column and 16-column light type. CENTS OF THANKS or MEMORIALS—Single paragraph style, \$1.00 per insertion for 50 words or less. Minimum, 1 inch.

COPY DEADLINE—5 p.m. Tuesday week of publication.

CULLIGAN

There are 2 young, strong men we will hire for any heavy, fresh jobs. (Not salesmen.) In return for day's labor, we give high wages, uniforms, insurance, profit sharing, pension, bonus, and commission, etc. It adds up to an immediate, responsible opportunity.

2321 Jackson Ave.
Across From Veterans Park

OR EXPERT floor and table lamp repair phone 475-8491. -32

RED TRACTOR TIRES—Large inventory on hand. Also used assenger - truck - grader tires. Jackson Tire Brokers, M-106, M-107, Mich. Ph. 596-2925. -32tf

Wanted
Golf Course
Maintenance Help

Good pay. Apply

Ann Arbor
Country Club

lease call 426-4303 or 682-3141 between 8:30 a.m. to 4:00 p.m.

OR SALE—5x8 tilt-bed trailer, 14" wheels, \$75. Call 475-8942. -31

New Home For Sale

By

W. C. Weber
Construction Co.

at 13537 Old US-12 E.

bedrooms, full basement, 2-car garage, all aluminum exterior, carpeting. Hotpoint stove and refrigerator. 1 acre lot. Natural gas. \$25,900 total. \$2,700 down, \$5 per month P. and I.

Home 475-2611.

Office: 475-2828

SPIRIT
NYLONS
2 Pr. 88c

at

DANCER'S

Benefit Basketball
Sponsored by Jaycee Auxiliary
Chelsea High Faculty

vs.
Jaycees.

Proceeds to March of Dimes

Thursday, Jan. 22
8:00 p.m.

CHELSEA HIGH GYM
Donation: 75c students, \$1 adults.

81

WANT ADS

BOARDING, trimming, training.
Town and Country Kennels,
Jackson Rd. at Baker. NO 8-7200.

Buying or Selling

Commercial - Residential

Lakes - River - Farms

Call

Carole Bell, 426-8892

Katherine Smith, 426-5630

Art Kane, 482-6655

Evinger Real Estate

Ph. 426-3286 Dexter, Mich.

4tf

Formal Wear

RENTAL SERVICE

Prom - Weddings - Special Events

6 different colors.

Foster's Men's Wear

2tf

Gem Travel Trailers

and Campers

PICK UP COVERS

4" ————— \$100.00

26" ————— \$179.00 and up

Triangle Sales

Chelsea 475-4302

40tf

NORTH LAKE building site for

sale on golf course. Phone 475-

8471. -17tf

WORK SHOE

HEADQUARTERS

Famous Red Wing Brand

\$12.95 to \$26.95

Foster's Men's Wear

84tf

Property For Sale:

RANCHER on two acres, six miles

from Chelsea and/or Manchester.

Three large bedrooms; built-in

kitchen, hardwood floors, full base-

ment. Attached, sealed two-car gar-

age, separate heated one and a

half story workshop.

ISLAND—Truly unique, approxi-

mately one acre with 100 oak

and hickory trees. Private bridge

to two-bedroom home in excellent

condition, could easily be enlarged,

two car garage, Crooked Lake.

22 ACRES vacant land - Old US-

12. Flowing Creek is property

line. Terms available.

Southside Realty

300 E. Michigan Ave.

Grass Lake, Michigan

Phone (517) 522-8469

81

FOR SALE — Small, year-round

home at Sugar Loaf Lake, needs

some repairs. Financing available.

Call 475-7673 before 3 p.m.

-34

G. G. HOPPER

Building Contractors

Phone GR 5-5581

Gregory 498-2148

40tf

Hurry!

FURNITURE

SALE

Last Day

Saturday, Jan. 24

MERKEL'S

81

FOR SALE—1961 Chevy, 2-door,

6-cylinder, automatic. Very good

condition. Call 475-7279. Mike

Slane. -31tf

WANT ADS

Real Estate

BASE LINE LAKE-FRONT—Two
story, 3-bedroom brick, two years
old. Good beach. Two tiled baths,
carpeted. Heated insulated garage
and workshop. Many extras. \$10,
000 down, 7% interest contract.

JUST REDUCED \$4,000 for quick
sale. Small cottage with 375-sq.-ft.
frontage on black-top near Patter-
son Lake.

Mary Wolter

Real Estate

7421 Dexter-Pinckney Rd.

Dexter 48130

Phone 426-8188

32tf

1-ACRE building sites for sale be-

tween Dexter and Chelsea on

private road. Road frontage or

lake frontage. Shown by appoint-

ment only. 475-8979. -20tf

TRAVEL TRAILERS at discount

prices. Motor homes, pick-up

campers—sales and rentals. Don-

na's Trailer Sales, 7100 Jackson

Rd., Ann Arbor. Phone 662-8266.

8tf

Go-Mix Fuel

For All 2-Cycle Engines

White Gas

Available at

Gateway

Sports Centre, Inc.

2tf

Hurry!

FURNITURE

SALE

Last Day

Saturday, Jan. 24

MERKEL'S

31

REAL ESTATE

FOR SALE

RANCH TYPE 3-bedroom home.

Good location.

BUSINESS BUILDING with base-

ment, gas heat.

Kern Real Estate

616 S. Main St., Chelsea

Phone 475-8563.

-31tf

SPECIAL OF WEEK

1968 Buick Special 4-dr. Sedan,

Auto trans., power steering. A

nice car. \$1695

1967 Buick Special 4-dr. Sedan,

Auto trans., power steering. A

nice car. \$1295

1967 Buick Special 4-dr. Sedan,

Auto trans., power steering. A

nice car. \$1295

1967 Buick Special 4-dr. Sedan,

Auto trans., power steering. A

nice car. \$1295

1967 Buick Special 4-dr. Sedan,

Auto trans., power steering. A

nice car. \$1295

1967 Buick Special 4-dr. Sedan,

Auto trans., power steering. A

nice car. \$1295

1967 Buick Special 4-dr. Sedan,

Auto trans., power steering. A

nice car. \$1295

1967 Buick Special 4-dr. Sedan,

Auto trans., power steering. A

nice car. \$1295

1967 Buick Special 4-dr. Sedan,

Auto trans., power steering. A

nice car. \$1295

1967 Buick Special 4-dr. Sedan,

Auto trans., power steering. A

nice car. \$1295

1967 Buick Special 4-dr. Sedan,

Auto trans., power steering. A

nice car. \$1295

1967 Buick Special 4-dr. Sedan,

Auto trans., power steering. A

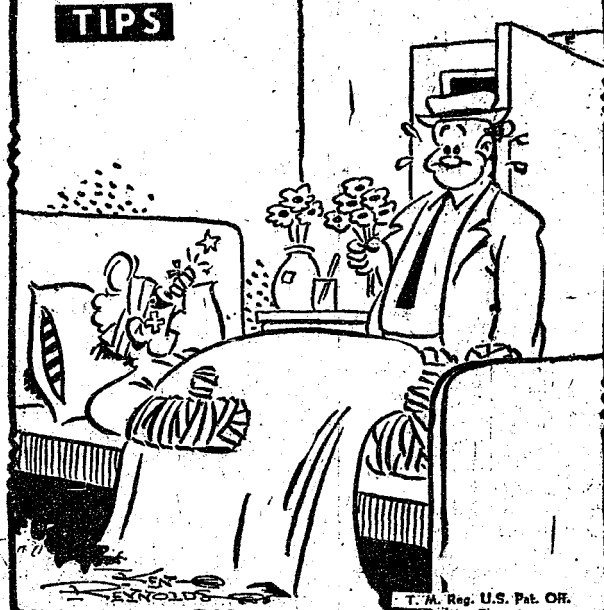
nice car. \$1295

1967 Buick Special 4-dr. Sedan,

Auto trans., power steering. A

nice car. \$1295

TIPS



"Have they caught the car we got
in the Standard Want Ads yet?"

WANT ADS

WORK SHOE

HEADQUARTERS

Famous Red Wing Brand

\$12.95 to \$26.95

Foster's Men's Wear

84tf

Looking for a

new home

You Can Afford

1-3 bedrooms.

2-Full basement.

3-Attached two-car garage.

4-Carpeting throughout.

5-Stove and refrigerator

furnished.

6-Aluminum siding.

\$18,900 on Your Lot.

Septic system & well not included.

Call for appointment

days or evenings.

W. C. Weber

Construction Co.

475-2828 475-2611

Starting our 17th year

in building fine homes.

29tf

FOR SALE—'64 Ford pick-up, V-8,

good running condition, some

rust. Call 479-7381 after 6 p.m.

Best offer. -31

FOR RENT — New, one bedroom,

duplex. Country setting. All elec-

tric heat. Back patio with sliding

glass door. Tile bath. Fenced-in

yard. Furnished or unfurnished.

\$140. Call 426-8188. -31

WANTED TO BUY—1½-ton truck

with grain box. Phone 428-4734.

81

The

JANUARY

CLEARANCE

Is Still On

at

DANCER'S

81

NEW THIS MONTH!

A surprise package designed to

beautifully fill the needs of the

budget home buyer.

See it at

Select Mobile Homes

3150 Clinton Rd.

Jackson, Mich.

81

Sprague

Buick-Olds-Opel, Inc.

1500 S. Main St., Chelsea

Phone 475-8664

Evening 475-6271 or 475-8240

Open evenings by appointment.

81

MEN'S

WINTER

WORK JACKETS

1/3 OFF

DANCER'S

BASEMENT

81

WANT ADS

ATTENTION: Morality erects

build

WANT ADS

WANTED — Good quality first- and second-cutting alfalfa hay. Call: Cameron. Phone Munnith 8-2580.

YARD GOODS

1 Lot
1/2 OFF

Also Bonded
and Others

at
BIG

REDUCTION
BASEMENT

At
DANCER'S

WISH to baby-sit in my home. Phone 475-8101.

WANT TEACHER — Eastman School of Music graduates, now accepting students. 475-2702.

ATTENTION: Working mothers — Will care for your children in my home while you work. Mrs. Judy Meyer. 475-8055.

HOUSE FOR RENT — Ranch-type, 3-bedrooms, gas heat, well located. Phone 475-8926.

EXPERIENCED PAINTER looking for part-time work. Interior exterior. Very reasonable, free estimates. 475-7678.

AMMOND ORGAN teachers wanted to teach in their own homes. Call Grinnell Brothers, Ann Arbor. 662-5667.

INTERIOR SPRAY PAINTING — Interior and exterior. Pinkney. 5-3246.

OR SALE — 1 light brown davenport. Good condition. 239 Park St. upstair.

WANT ADS

CLOGGED SEWER

Reynolds Sewer Service

We Clean Sewers Without Digging
Drains Cleaned Electrically
FREE ESTIMATES
2-YEAR GUARANTEE
Phone Ann Arbor NO 2-5277
"Sewer Cleaning Is Our Business."
Not a Sideline" 38tf

CAR RENTAL by the day, week, and month. Full insurance coverage, low rates. Call Lyle Chriswell at Palmer Motor Sales, GR 5-3271.

For A Gift
Or For Yourself

Day-At-A-Glance
Week-At-A-Glance
Month-At-A-Glance
for 1970

Address and Telephone
Memory Minder

at
Chelsea Standard.

800 N. Main St.

CHILDREN of any age cared for in my home. Centrally located, licensed home with my own transportation. Phone 475-2926.

FOR SALE — Baby jumper and car seat. Phone 475-4875.

AKC-NRCK REGISTERED PUPPIES — Chihuahua. One female, Poodles, male and female, Toy Fox Terrier, one female. Part Poodle, female, \$10. One female Chihuahua, \$25. Stud service available. 475-7801, 3045 N. Lima Center Rd.

PATCHING AND PLASTERING. Call 475-7489.

FOR SALE — 1962 Buick LeSabre. Good running condition. Call 475-8986.

WANT ADS

12 STRING GUITAR for sale. Excellent condition. Ph. 479-4281. 29tf

OFFICE SPACE for rent? 2nd floor, 3 air-conditioned rooms, about 500 sq. ft. Centrally located in Chelsea business section. Immediate occupancy. Merkel Bros. Phone 475-8621.

Porter's TV Service

Prompt courteous service on all makes and models. Specialist in color and black and white.

Expert service on Stereos, Phonographs, Tape Recorders, Radios, small electric appliances.

Day and Evening Service

Willis Porter, Owner

212 Buchanan, Chelsea

Call 475-8380

Chelsea-Dexter

Area Homes-Farms

3 BEDROOM — Sharp, just decorated. Full basement. Excellent location near tennis courts and recreation field. 2-car garage. Priced to sell.

3 BEDROOM — Clean, ideal starter home, garage. Nice location for elementary school in the Village of Chelsea.

4 BEDROOM — Dining room, family room, kitchen with eating space. Centrally located for all schools. 2-car garage, 2 porches. Priced at \$23,900. Financing available.

Farms

150 ACRES — 30-acre lake, 4-bedroom frame farm home. Many out-buildings.

110 ACRES — 30-acre lake, many trees, 100-yr-old brick farm home. Needs complete renovation.

150 ACRES — Rolling vacant land. Woods and water. Adjacent to Waterloo Recreation Area.

Many lake properties and Building Sites to choose from.

Eibler, Frisinger & St. Amour

REALTORS

Chelsea 475-8681 Dexter 426-4659

Evenings call: 475-2621

Paul Frisinger 475-2621

Herman Koehn 475-2613

George Frisinger 479-4161

Bob Thornton 475-8897

PEOPLE ARE CRAZY! Some want their cars in their Sunday best at Soispra Carwash, 1188 S. Main (next to Chelsea-Lima). 475-8102.

TAKE IT OFF! Take it off at Soispra Carwash, 1188 S. Main (next to Chelsea-Lima). 475-8102.

FOR SALE — Firewood, \$17 split, \$11 round, \$8 slab. Phone 479-4664 for delivery.

WANTED to share a ride from Chelsea to St. Joseph Mercy Hospital, Ann Arbor, from 10 a.m. to 7 p.m. 5 or 7 days a week. Call 475-8305.

FOR RENT — Unfurnished 4-room apartment. Carpeted living, dining and bedrooms. Phone 475-7484 after 6 p.m.

REWARD — Pair of tri-color Beagles lost Dec. 16, vicinity of M-52 and Green Lake. Phone 479-6591.

FOR SALE — Kitchen table, with formica top, 4 chairs, \$20; twin size bed with mattress and springs, \$20; maple console stereo, AM-FM radio, \$75. Phone 475-7362.

FOR SALE — Seasoned firewood. Phone GR 9-7261.

FOR SALE — New, 3-bedroom all aluminum home. Natural gas, furnace, tile floors, on large corner lot. Blacktop road. Five miles from Dexter. \$24,000. Call 426-8188.

NEW FURNISHED — Knotty pine, apartment on lake, wall-to-wall carpet. No children, no pets. \$150 per month. First and last month's rent in advance. Reference required. Ph. Chelsea 475-2874.

FOR SALE — New, 3-bedroom all aluminum home. Natural gas, furnace, tile floors, on large corner lot. Blacktop road. Five miles from Dexter. \$24,000. Call 426-8188.

NEW FURNISHED — Knotty pine, apartment on lake, wall-to-wall carpet. No children, no pets. \$150 per month. First and last month's rent in advance. Reference required. Ph. Chelsea 475-2874.

FOR SALE — New, 3-bedroom all aluminum home. Natural gas, furnace, tile floors, on large corner lot. Blacktop road. Five miles from Dexter. \$24,000. Call 426-8188.

NEW FURNISHED — Knotty pine, apartment on lake, wall-to-wall carpet. No children, no pets. \$150 per month. First and last month's rent in advance. Reference required. Ph. Chelsea 475-2874.

FOR SALE — New, 3-bedroom all aluminum home. Natural gas, furnace, tile floors, on large corner lot. Blacktop road. Five miles from Dexter. \$24,000. Call 426-8188.

NEW FURNISHED — Knotty pine, apartment on lake, wall-to-wall carpet. No children, no pets. \$150 per month. First and last month's rent in advance. Reference required. Ph. Chelsea 475-2874.

FOR SALE — New, 3-bedroom all aluminum home. Natural gas, furnace, tile floors, on large corner lot. Blacktop road. Five miles from Dexter. \$24,000. Call 426-8188.

NEW FURNISHED — Knotty pine, apartment on lake, wall-to-wall carpet. No children, no pets. \$150 per month. First and last month's rent in advance. Reference required. Ph. Chelsea 475-2874.

FOR SALE — New, 3-bedroom all aluminum home. Natural gas, furnace, tile floors, on large corner lot. Blacktop road. Five miles from Dexter. \$24,000. Call 426-8188.

NEW FURNISHED — Knotty pine, apartment on lake, wall-to-wall carpet. No children, no pets. \$150 per month. First and last month's rent in advance. Reference required. Ph. Chelsea 475-2874.

FOR SALE — New, 3-bedroom all aluminum home. Natural gas, furnace, tile floors, on large corner lot. Blacktop road. Five miles from Dexter. \$24,000. Call 426-8188.

NEW FURNISHED — Knotty pine, apartment on lake, wall-to-wall carpet. No children, no pets. \$150 per month. First and last month's rent in advance. Reference required. Ph. Chelsea 475-2874.

FOR SALE — New, 3-bedroom all aluminum home. Natural gas, furnace, tile floors, on large corner lot. Blacktop road. Five miles from Dexter. \$24,000. Call 426-8188.

NEW FURNISHED — Knotty pine, apartment on lake, wall-to-wall carpet. No children, no pets. \$150 per month. First and last month's rent in advance. Reference required. Ph. Chelsea 475-2874.

FOR SALE — New, 3-bedroom all aluminum home. Natural gas, furnace, tile floors, on large corner lot. Blacktop road. Five miles from Dexter. \$24,000. Call 426-8188.

NEW FURNISHED — Knotty pine, apartment on lake, wall-to-wall carpet. No children, no pets. \$150 per month. First and last month's rent in advance. Reference required. Ph. Chelsea 475-2874.

FOR SALE — New, 3-bedroom all aluminum home. Natural gas, furnace, tile floors, on large corner lot. Blacktop road. Five miles from Dexter. \$24,000. Call 426-8188.

NEW FURNISHED — Knotty pine, apartment on lake, wall-to-wall carpet. No children, no pets. \$150 per month. First and last month's rent in advance. Reference required. Ph. Chelsea 475-2874.

FOR SALE — New, 3-bedroom all aluminum home. Natural gas, furnace, tile floors, on large corner lot. Blacktop road. Five miles from Dexter. \$24,000. Call 426-8188.

NEW FURNISHED — Knotty pine, apartment on lake, wall-to-wall carpet. No children, no pets. \$150 per month. First and last month's rent in advance. Reference required. Ph. Chelsea 475-2874.

FOR SALE — New, 3-bedroom all aluminum home. Natural gas, furnace, tile floors, on large corner lot. Blacktop road. Five miles from Dexter. \$24,000. Call 426-8188.

NEW FURNISHED — Knotty pine, apartment on lake, wall-to-wall carpet. No children, no pets. \$150 per month. First and last month's rent in advance. Reference required. Ph. Chelsea 475-2874.

FOR SALE — New, 3-bedroom all aluminum home. Natural gas, furnace, tile floors, on large corner lot. Blacktop road. Five miles from Dexter. \$24,000. Call 426-8188.

NEW FURNISHED — Knotty pine, apartment on lake, wall-to-wall carpet. No children, no pets. \$150 per month. First and last month's rent in advance. Reference required. Ph. Chelsea 475-2874.

FOR SALE — New, 3-bedroom all aluminum home. Natural gas, furnace, tile floors, on large corner lot. Blacktop road. Five miles from Dexter. \$24,000. Call 426-8188.

NEW FURNISHED — Knotty pine, apartment on lake, wall-to-wall carpet. No children, no pets. \$150 per month. First and last month's rent in advance. Reference required. Ph. Chelsea 475-2874.

FOR SALE — New, 3-bedroom all aluminum home. Natural gas, furnace, tile floors, on large corner lot. Blacktop road. Five miles from Dexter. \$24,000. Call 426-8188.

NEW FURNISHED — Knotty pine, apartment on lake, wall-to-wall carpet. No children, no pets. \$150 per month. First and last month's rent in advance. Reference required. Ph. Chelsea 475-2874.

FOR SALE — New, 3-bedroom all aluminum home. Natural gas, furnace, tile floors, on large corner lot. Blacktop road. Five miles from Dexter. \$24,000. Call 426-8188.

NEW FURNISHED — Knotty pine, apartment on lake, wall-to-wall carpet. No children, no pets. \$150 per month. First and last month's rent in advance. Reference required. Ph. Chelsea 475-2874.

Jaycees Observe Anniversary

As the U. S. Jaycees approach their 50th Anniversary, being celebrated during Jaycee Week Jan. 18-24, the local Jaycees have written this story so that the citizens of Chelsea might better understand the purpose, history and goals of the organization.

If you know nothing about the local organization one of the first questions one might ask is "What are the Chelsea Jaycees?" The Chelsea Jaycees are a group of wide-awake young men who are eager to get ahead in life, willing to devote a part of their spare time to activities being sponsored by the local chapter.

The Jaycees are neither a social club, lodge or a fraternity. While we encourage fellowship among our members, we use it merely as a means to help them to get effective action by young men on worthy projects. Briefly, the Jaycees are a young men's civic group.

Membership qualifications are restricted only in two points: first, the age, where the provision is that a young man must be between the ages of 21 and 35, both inclusive; and second, that he be of good character. There is no restriction as to race, creed or color, type of business or any other qualifications.

The next question one might ask is "What is the purpose of the Jaycees?" The motive of the local Jaycees is leadership training through community development. John Shepherd, U. S. Jaycee President (1947-48), described the Jaycee movement as an organization whose greatest strength is that its ideal is far outside itself. Young men are not Jaycees for the sake of being Jaycees. Jayceism is not an end in itself, but a means to a much larger end. It is only a vehicle to help young men get where they are going—to help them achieve leadership.

If we take an objective interpretation of the statement above, we find that the basic purpose of the Jaycees is to provide the opportunity for young men to gain leadership experience. Jaycees build men and the men build the communities.

Active participation in the Jaycees gives a young man assurance, stature, public speaking experience and all of the many other attributes which point to a leader in business or community life. How does a young man learn the service?

Community service can best be defined by giving an outline of the type of programs under which the local Jaycees operate. Programs in community development, an active interest in local state and national government, public safety and youth welfare activities are just a few of the lines along which the local Jaycees extend.

Chelsea Jaycees have been involved in school bond issues, millage, teacher strikes, construction of Pierce Park, seat belt installation Community Fair, Pass, Punt & Kick competition for youngsters, Junior Champ and many many other projects throughout its 14-year existence.

The local Jaycees are currently active on the Chelsea Planning Commission, Recreation Council, United Fund Board of Directors and Scouting to name a few. This type of active participation builds men and gives them leadership training.

The Jaycee movement started in Chelsea on Jan. 11, 1955 when the Chelsea Jaycees came into existence through the extension efforts of the Ann Arbor Jaycees. Charter members of this new organization were: Dr. J. H. Pilkington, Vince Burg, Robert Vanderkelen, Ray Knickerbocker, John Winans, Roy Guenther, George Knickerbocker, John Miller, Jack Wellnitz, William Adams, Robert Adams, Lyle Chriswell, Mike Green, Alton Guenther, John Jenkins, Merle Leach, Gerald Lehmann, James Miller, Arden Musbach, Richard O'Hara, Henry Orbring, Arthur Paul, Charles Popovich, Jr., John Popovich, Robert Shears, Judd Small, William Storey, and Robert Topp.

Chelsea Jaycees were blessed over the years with many great presidents that led our chapter through years of achievement. Many new projects were adopted and the chapter grew in stature through the efforts of these presidents. The Chelsea Jaycees achieved its greatest moment of glory under the leadership of George "Ed" Akin during the year 1964-65 when this chapter took almost every state award possible. For this outstanding effort, "Ed" was named one of the five Outstanding Chapter Presidents for the State of Michigan.

The presidents by year were: 1954-55, Dr. J. H. Pilkington; 1955-56, J. "Vince" Burg; 1956-57, George Palmer; 1957-58, Larry Gahagen and Paul Schaible; 1958-59, John Popovich and Roland Edler; 1959-60, Robert Vanderkelen; 1960-61, Merle Leach; 1961-62, Daniel Maroney; 1962-63, George Winchester, Jr.; 1963-64, Lyle Chriswell; 1964-65, George "Ed" Akin; 1965-66, Arthur Stoll; 1966-67, Ron Branham; 1967-68, Bob Updegraff; 1968-69, Don Proctor; 1969-70, Walt Brown.

The local Jaycees are proud of their heritage and past accomplishments. The Jaycees believe in Chelsea and are continually trying to make our community a better place in which to live and raise a family. With the help and backing of the citizens of Chelsea this goal will be reached.

Parliamentary Procedure Course Offered

An adult course in parliamentary procedure will be offered for six weeks at Chelsea High school for interested residents beginning Thursday evening, Feb. 5, at 7 o'clock, according to William Coleus, speech teacher at Chelsea High and organizer of the course.

"It will be offered once a week for six weeks to all area residents," began Coleus. "Of particular value to club members, church organizations, and other citizens, the course will cover the basic principles of parliamentary procedure, as well as demonstrate its usage and applicability. Every citizen should have a knowledge of parliamentary procedure to effectively participate in his community," Coleus said in speaking of the two-hour course.

Coleus intends that the proceeds from the course will be given to the summer debate institute fund. This fund sends debaters during the summertime to various debate institutes at the major universities.

He noted that institutes are held at Michigan State University, the University of Michigan, Eastern Michigan University, and Toledo University.

Each is a two-week comprehensive study of debate. Actually, two weeks of this intensified study, the advice of experts who come from all over the country to lecture to the young debaters, and the practice in debate given, almost gives the debaters as much experience as one full year of debating," Coleus pointed out.

Coleus noted that the cost of these institutes is quite high, generally around \$100. He would like to defray that cost as much as possible. He has other projects in mind (which he will disclose later) to earn the money to send the debaters from Chelsea High to some of the clinics.

For further information on the course, and registration procedures, Coleus may be reached at the high school.

THANK YOU
I would like to thank my friends, neighbors and relatives for their flowers, gifts, visits and the many cards I received while in the hospital. Also the Rev. Worgess and the Rev. Stenson for their visits and prayers. Your thoughts will always be appreciated. Thank you very much.
Mrs. Marvin Schiller.

CARD OF THANKS
I wish to thank all my friends, neighbors, and relatives for all the beautiful flowers, the many lovely cards, gifts, and calls, while I was in the hospital, also for the visits of the Pastor, Frederick Atkinson, all was greatly appreciated.
Laura Fitzsimmons.

If you can have but one possession, character is still your best bet.

WHEREAS, the civic bodies and service organizations of our community and the departments of the local government recognize the great service rendered to this community by the Chelsea JAYCEES, and

WHEREAS, The United States JAYCEES and its affiliated state and local organizations have set aside the week of January 19-25, 1970, to observe the founding of the JAYCEES and to commemorate such founding by the selection of an outstanding man in this community as the recipient of the Distinguished Service Award, and

WHEREAS, this organization of young men has contributed materially to the betterment of this community throughout the year,

THEREFORE, I, Harold Pennington, President of the Village of Chelsea, do hereby proclaim the week of January 19-25, 1970, as JAYCEE WEEK and urge all citizens of our community to give full consideration to the future services of the JAYCEES.

Dated: January 12, 1970.

H. L. Pennington
Chelsea Village President

Richard Harvey
Village Clerk.
Dated: January 13, 1970.

President
Two-year term
Treasurer
Two-year term
Three Trustees
Two-year terms
Assessor
2 Library Board Trustees
Three-year terms

Monday, Feb. 9, 1970
at 8:00 O'clock p.m.
to nominate Candidates for Offices to be filled at the Annual Village Election on March 9, 1970, viz:

President
Two-year term
Treasurer
Two-year term
Three Trustees
Two-year terms
Assessor
2 Library Board Trustees
Three-year terms

Richard Harvey
Village Clerk.
Dated: January 13, 1970.

President
Two-year term
Treasurer
Two-year term
Three Trustees
Two-year terms
Assessor
2 Library Board Trustees
Three-year terms

Monday, Feb. 9, 1970
at 8:00 O'clock p.m.
to nominate Candidates for Offices to be filled at the Annual Village Election on March 9, 1970, viz:

President
Two-year term
Treasurer
Two-year term
Three Trustees
Two-year terms
Assessor
2 Library Board Trustees
Three-year terms

Richard Harvey
Village Clerk.
Dated: January 13, 1970.

President
Two-year term
Treasurer
Two-year term
Three Trustees
Two-year terms
Assessor
2 Library Board Trustees
Three-year terms

Monday, Feb. 9, 1970
at 8:00 O'clock p.m.
to nominate Candidates for Offices to be filled at the Annual Village Election on March 9, 1970, viz:

President
Two-year term
Treasurer
Two-year term
Three Trustees
Two-year terms
Assessor
2 Library Board Trustees
Three-year terms

Richard Harvey
Village Clerk.
Dated: January 13, 1970.

President
Two-year term
Treasurer
Two-year term
Three Trustees
Two-year terms
Assessor
2 Library Board Trustees
Three-year terms

Monday, Feb. 9, 1970
at 8:00 O'clock p.m.
to nominate Candidates for Offices to be filled at the Annual Village Election on March 9, 1970, viz:

President
Two-year term
Treasurer
Two-year term
Three Trustees
Two-year terms
Assessor
2 Library Board Trustees
Three-year terms

Richard Harvey
Village Clerk.
Dated: January 13, 1970.

President
Two-year term
Treasurer
Two-year term
Three Trustees
Two-year terms
Assessor
2 Library Board Trustees
Three-year terms

Monday, Feb. 9, 1970
at 8:00 O'clock p.m.
to nominate Candidates for Offices to be filled at the Annual Village Election on March 9, 1970, viz:

President
Two-year term
Treasurer
Two-year term
Three Trustees
Two-year terms
Assessor
2 Library Board Trustees
Three-year terms

Richard Harvey
Village Clerk.
Dated: January 13, 1970.

President
Two-year term
Treasurer
Two-year term
Three Trustees
Two-year terms
Assessor
2 Library Board Trustees
Three-year terms

Monday, Feb. 9, 1970
at 8:00 O'clock p.m.
to nominate Candidates for Offices to be filled at the Annual Village Election on March 9, 1970, viz:

President
Two-year term
Treasurer
Two-year term
Three Trustees
Two-year terms
Assessor
2 Library Board Trustees
Three-year terms

Richard Harvey
Village Clerk.
Dated: January 13, 1970.

President
Two-year term
Treasurer
Two-year term
Three Trustees
Two-year terms
Assessor
2 Library Board Trustees
Three-year terms

Monday, Feb. 9, 1970
at 8:00 O'clock p.m.
to nominate Candidates for Offices to be filled at the Annual Village Election on March 9, 1970, viz:

President
Two-year term
Treasurer
Two-year term
Three Trustees
Two-year terms
Assessor
2 Library Board Trustees
Three-year terms

Richard Harvey
Village Clerk.
Dated: January 13, 1970.

President
Two-year term
Treasurer
Two-year term
Three Trustees
Two-year terms
Assessor
2 Library Board Trustees
Three-year terms

Monday, Feb. 9, 1970
at 8:00 O'clock p.m.
to nominate Candidates for Offices to be filled at the Annual Village Election on March 9, 197

Census of Agriculture Most Important to Farmer Families

What's ahead for Michigan agriculture and its farm families? The Census of Agriculture now being conducted may provide some answers.

B. Dale Ball, director of the Michigan Department of Agriculture, said, "We hope farmers will understand the importance of the census and how it may benefit them."

Ball pointed out that foreign markets are becoming increasingly important to Michigan's agricultural economy, and census data may aid in development of world trade.

"Canning, processing and distributing industries," Ball said, "will be looking at census figures to determine where they can locate close to adequate sources of raw products they need. They will also be concerned with transportation and the availability of nearby markets."

Because of Michigan's agricultural abundance and variety, its location in mid-America, and the advantages of the St. Lawrence seaway, it has a potential for attracting more agri-industries than many competing states, he explained.

In addition to such basic information as total number of farms and acreage, value of land and buildings, and crop production, census data will include number of farm operators by age, value of farm products sold, age and market value of selected items of equipment. Additional surveys in 1971 will seek data on major trends in production methods.

This is the first farm census ever conducted by mail. It is a project of the Bureau of the Census, U. S. Department of Commerce. In earlier censuses, enumerators visited all farmers to complete and pick up the report forms.

Birthday Airplane Ride Ends in Forced Landing

A birthday plane ride turned out to be slightly more dangerous than anticipated for Thomas Gardner, 19, son of Mr. and Mrs. Russell Gardner, 129 Clardale Ct., Tom's squiremate at Northwestern Michigan College, Traverse City, was taking Tom for a birthday ride Sunday, Jan. 18, when the engine of his passenger plane stopped, causing a forced landing on Lake Leelanau.

Neither of the boys was injured. Tom's birthday was Saturday, Jan. 17.

EMU Degrees Earned By 10 From Chelsea

A record 995 undergraduate and graduate degrees were awarded by Eastern Michigan University, Ypsilanti, Sunday, Jan. 18 at its 21st January Commencement. Among these were 10 degrees awarded to students from the Chelsea area.

A crowd of 5,000 parents and other guests witnessed the ceremonies in Bowen Field House.

Mrs. Richard (Grace) McCalla, received her bachelor of science degree in English education. Mrs. McCalla, the daughter of Mr. and Mrs. Robert Kushmaul, 1451 Guenther Rd., is a 1965 graduate of Chelsea High School. Her husband is stationed in Vietnam with the Air Force until March 1. She is living in Chelsea with her parents.

Mrs. McCalla intends to join the faculty of the Dwight E. Beach school in February, teaching English to the seventh grade.

After the commencement exercises Mrs. McCalla was honored at a family dinner, "not quite as festive as it would have been had my husband been home," she noted.

Other area graduates include John Arbour, 5771 Gregory Rd., EDS; Philip Arbour, 5771 Gregory Rd., BS; June Guenther, 5150 Townhall Rd., BS; David Henes, 7820 Third, BS; John Hutchings, 6541 Dexter-Ann Arbor Rd., BS, all of Dexter.

Steven Easudes, 15041 Gorton, Grass Lake received a BA degree and Jean Boyce, 18554 Dutton Rd., Gregory, was awarded a BS degree.

Honorary degrees of Doctor of Laws were conferred upon three Michigan men and one from Ohio. Edgar Wiggins, Waugh, professor emeritus of political science at EMU and Commencement speaker; Charles Stewart Harding Mott, president of the Charles Stewart Mott Foundation; Harold C. Rapson, former superintendent of schools in Monroe; and W. Hurmon Wilson, president of the Southwestern Publishing Co., publishers of business education textbooks in Cincinnati, O.

A total of 726 bachelors and 259 masters and specialists degrees were conferred. This was 154 more than a year ago.

Uniform Marking Plan To Be Tried For County Roads

Lansing—The first test in Michigan of proposed uniform route marking on county roads will take place next summer in Allegan, Chippewa and Mackinac counties, it was announced by the Department of State Highways and the County Road Association.

In the test, old US-31 in Allegan county will be designated A2, and old M-48 between Rudyard and Engadine in Chippewa and Mackinac counties will be designated B1.

The routes will be identified by a new and distinctive route marker—five-sided in the shape of a key stone with yellow letters on a blue background.

The routes also will be designated on the 1970 edition of the Official Michigan Highway Map published by the Highway Department.

It is expected that the most effective use of the signs will be in directing travelers to recreation areas and small communities that are served directly by state highways.

If proved to be beneficial to motorists, it is expected that other roads will be signed and added to the highway map in the future.

The Highway Department said that signs on the test routes will be installed prior to the start of next summer's vacation period.

CREDIT PROBLEM? NO PROBLEM!

CONTACT
MR. SMALL
CREDIT ADVISOR
at

**HENDERSON
FORD**
665-0871
Ann Arbor



SOME FRISKY SNOWBUNNIES from Brownie Troop 145 spent Sunday afternoon tobogganing and sledding at the Gary Albrecht home. Equally at home in the snow was their leader, Mrs. Herbert Hinz, together with Mrs. David Elkins and Mrs. Fred Meyer who helped supervise.



TROOP 58—

Girl Scout Troop 58 met Monday, Jan. 19 at the Congregational church. We opened with the Girl Scout promise and sang "Girl Scouts Together."

We took the girl scout laws and told what we did to respect them.

We have decided to go to Greenfield Village in April.

Next Monday we must bring \$5. If we sell 100 boxes of Girl Scout cookies, we get our \$5 back.

Jan. 19—brought treats. We closed with the Indian taps. Debbie Packard, scribe.

TROOP 420—

We held our meeting at American Legion Post 31 Home Monday, Jan. 19. We opened our meeting with the pledge of allegiance. We were dismissed to our patrol corners to make plans for the Klondike Derby to be held Jan. 31.

Doug Hansen became a first class scout. We played musical chairs, except we switched the lights on and off. Dennis Bauer of Wolf patrol won.

We closed with scoutmaster's sign of reverence. Skeets Worden, scribe.

BROWNIE TROOP 169—

Brownie Troop 169 met Monday, Jan. 19 at the Congregational church.

17 members were present. We paid our dues, sang grace and had refreshments furnished by Veronica Satterthwaite.

In Brownie Ring we discussed what the first three Girl Scout Laws mean to us. We also decided to have a Valentine party for our sister troop, Number 58. We worked on our "swishy bags"

For And About Teenagers



THE WEEK'S LETTER:

I am 13 and have a problem. There is a boy in my room and I like him very much. Sometimes he acts as if he likes me, sometimes he doesn't. There are three girls in my room who are good friends of mine. When they are around he just walks off and pays

no attention to me. Then, when I'm around him by myself, he flirts around with me and talks to me. I'm really puzzled. Why does he act that way?

OUR REPLY: You are probably making too much out of nothing. It is possible he stops flirting with other girls when you come around because he doesn't want you to believe that he flirts with everyone. If you think that he flirts with everyone, you would be less impressed when he flirts with you. At any rate, don't be concerned about trying to figure it out. It isn't that important. What is important is the way he acts toward you, whether he likes you and you like him. If he completely ignores you when others are around, you can be sure that he doesn't like you as much as you like him.

If you have a teen-age problem you want to have discussed or an observation to make, address your letter to "For and About Teen-Agers," Community and Suburban Press-Service, in care of this news paper.

Stacey Ames, scribe.

BROWNIE TROOP 247—

Brownie Troop 247 met Wednesday, Jan. 14 at the Congregational church. We learned how to set the table for dinner, sang songs and wrote notes to our mothers to tell them we will go to Lane's Animal Hospital on Saturday, Jan. 28.

We will have a skating party. Cookies, pretzels, and punch were our treats. We closed our meeting with the Brownie Ring and Squeeze.

Kelli L. Borton, scribe.

CHARM BEAUTY SALON

4396 CLEAR LAKE ROAD
(Formerly of Grass Lake)

Two Operators - Hair Styling and Wig Service
Open on Mondays. Closed Tuesdays.

PHONE 475-2700

World's Largest Homebuilder Plans Plant in Battle Creek

Lansing—Gov. William G. Milliken welcomed the recent announcement that the world's largest homebuilder has chosen Michigan for the location of its first industrialized housing plant.

Levitt & Sons, Inc., a subsidiary of International Telephone and Telegraph, announced in New York that it had selected Battle Creek for a 140,000-square-foot plant

scheduled to be in operation by next September.

Industrialized housing consists of three-dimensional building modules designed to be transported from points of manufacture to points of use. The units are placed on permanent foundations, meet local building codes and zoning requirements.

Production capacity for the Battle Creek plant will be 2,000 units per year on a one-shift basis of 500 employees and designed eventually to reach 4,000 units with 1,000 employees.

25% OFF SALE on 25-piece Basic Sets



1847 ROGERS BROS. STAINLESS

HERE'S WHAT YOU SAVE!
SALE DATES—December 26, 1969 thru February 7, 1970

| PATTERN | SERVICE | Special Sale Price | Saving |
|------------------|-----------------------|--------------------|---------|
| CARINO | 25-pc. Service for 4 | \$14.95 | \$ 4.99 |
| ANNIVERSARY | 50-pc. Service for 8 | 29.95 | 9.98 |
| ROYAL BOUQUET | 75-pc. Service for 12 | 44.88 | 14.97 |
| EVANGELINE | 25-pc. Service for 4 | 18.71 | 6.24 |
| CONCEPT | 50-pc. Service for 8 | 37.42 | 12.48 |
| SEA ISLAND | 75-pc. Service for 12 | 56.13 | 18.72 |
| DUBONNET | 25-pc. Service for 4 | 26.21 | 8.74 |
| COTILLION | 50-pc. Service for 8 | 52.42 | 17.48 |
| LIBERTY • NAVAHO | 75-pc. Service for 12 | 78.63 | 26.22 |

*Trademark of INTERNATIONAL SILVER COMPANY.

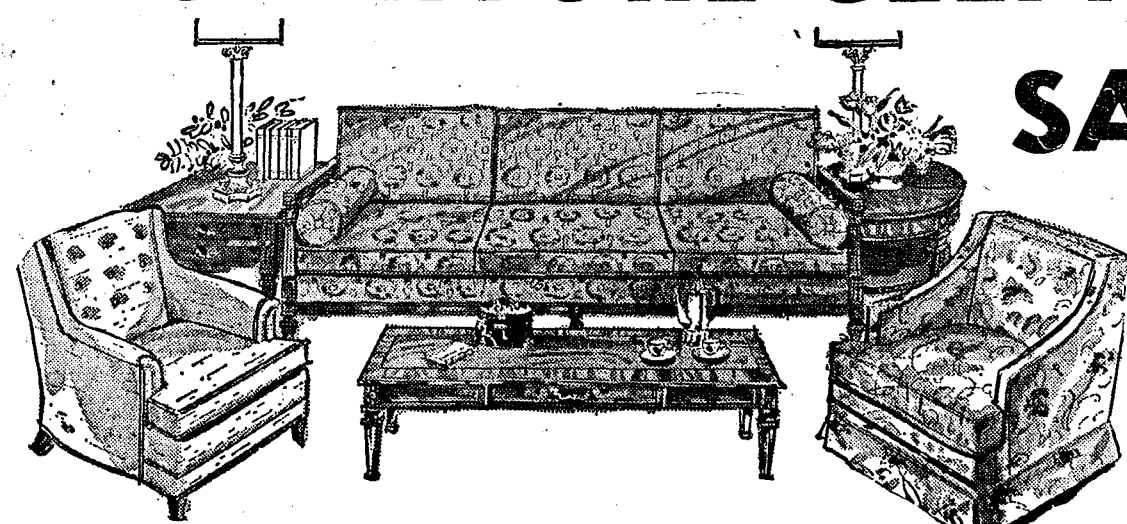
Winans Jewelry Store

FURNITURE CLEARANCE

SALE ENDS

Sat., Jan. 24

5:30 p.m.



Hurry, or You'll Miss It!

Last chance to buy anything in our furniture stock at

DISCOUNTS of 10% to 50%

Merkel Furniture

CHELSEA
Phone 475-8621

I, Sylvester A. Leonard, Treasurer of Washtenaw County, Michigan, hereby certify that, as of December 8, 1969, the records of this Office indicate that the total of all voted increases over and above the tax limitation established by the Constitution of Michigan in any local units of government affecting the taxable property located in Chelsea School District, Washtenaw and Jackson Counties, Michigan, is as follows in Washtenaw County:

| | |
|-----------------------------|--|
| By Washtenaw County: | 1 1/4 Mills, 1953-1972 Incl. \$1,490,000 unlimited 1967-1982, incl. |
| By Sylvan Township: | None |
| By Sharon Township: | None |
| By Freedom Township: | None |
| By Lima Township: | None |
| By Lyndon Township: | None |
| By Dexter Township: | None |
| By Chelsea School District: | \$2,200,000 unlimited 1956-1985, incl. \$2,360,000 unlimited 1965-10.98 mills for the year 1969 |

| | |
|--|-----------------------------------|
| By Washtenaw County Intermediate School District | 1 Mill 1969 and future years |
| By Washtenaw Community College: | 1 1/4 Mills 1965 and future years |

Sylvester A. Leonard
Treasurer
Washtenaw County, Michigan

I, Marilyn E. Johnson, Treasurer of Jackson County, Michigan, hereby certify that, as of December 8, 1969, the records of this Office indicate that the total of all voted increases over and above the tax limitation established by the Constitution of Michigan, in any local units of government affecting the taxable property located in Chelsea School District, Washtenaw and Jackson Counties, Michigan, is as follows:

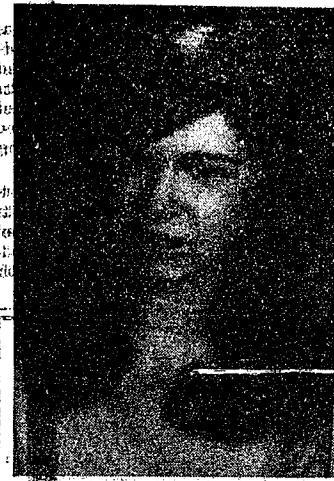
| | |
|--------------------------------------|-------------------------------|
| By Jackson County: | None |
| By Jackson County Community College: | 1.33 Mills 1969 - unlimited |
| By Special Ed., Jackson | 1.5 Mills 1969 - unlimited |
| By Grass Lake Township: | 2 Mills 1969-1972 incl. |
| By Waterloo Township: | None |
| By the School District: | 10.98 Mills for the year 1969 |

Marjorie Cox
Deputy Treasurer
Jackson County, Michigan

This Notice is given by order of the Board of Education of Chelsea School District, Washtenaw and Jackson Counties, Michigan.

HERMAN L. KOENN
Secretary, Board of Education.

Dated: Jan. 14, 1970.



Eder - Schneider Vows Exchanged at St. Mary Church

Mr. and Mrs. James P. Schneider are now at home at 2230 Cram Place, Ann Arbor. Mrs. Schneider is the former Katherine Eder, daughter of Mr. and Mrs. John Eder, 756 Taylor St. Mr. Schneider is the son of Mrs. Lewis Schneider, 219 Railroad St., and the late Mr. Schneider.

Their marriage took place Saturday, Jan. 3, at St. Mary Catholic Church, with the Rev. Fr. Francis Wawoniak officiating, assisted by the Rev. Warner Siebert, pastor of St. Paul United Church of Christ.

ENGAGED: Mr. and Mrs. Ed. W. Paul, 420 Garfield St., announce the engagement of their daughter, Elaine Marie, to Dale Lee Lennox, the son of Mr. Henry C. Holly, Ann Arbor, and the late Vern Lennox. The bride-elect is a 1967 graduate of Chelsea High school and has attended Eastern Michigan University. Her fiancé is a 1967 graduate of Ann Arbor High school and is presently a junior at EMU where he is majoring in accounting. He is employed by the University of Michigan. A June 12 wedding is planned.

Older Adult Group Observes January Birthdays of Members

Six members of the Older Adult Group of the Methodist church were honored in observance of January birthdays at the Jan. 17 meeting of the group in the social center of the Methodist church. Oldest of the group is Mrs. Mabel Ariz who will be 94 years old Jan. 31. Others are Mrs. Irvn Weiss, Mrs. Hilda Pierce, Mrs. Winifred Coffron, Al Hoelzer and Carl Schlosser.

Miniature snowmen figures and snow scenes with colored candles were used for the table decorations for the pot-luck dinner. A birthday cake was provided by Mrs. Herbert Paul, director of the group. The tables were decorated by Mrs. Pierce and Mrs. Coffron. The opening devotional service was led by Mrs. Lyman Adams while the table prayer was offered by the Rev. George Neyin. Group singing was led by Mrs. George Standish with Max Robert Worgess as the pianist.

The next meeting is scheduled for Feb. 21 at which time the Action Group of the church will provide the dinner and program for the Older Adult Group. Mrs. Lyman Adams and Miss Florence Ives were named as the committee for the March meeting.

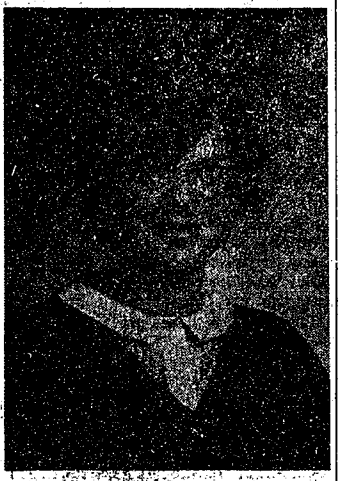
Hilts - Cannon Wedding Revealed

American Legion Hall at Cavanaugh Lake was the site of a wedding reception for Roger Hilts and Gail Cannon Friday, Jan. 9, following a private wedding ceremony in Ann Arbor.

Attending were Mr. and Mrs. Vern Hilts, 5710 Conway, Mrs. Ida Cannon, mother of the bride, and Miss Loretta Hilts, sister of the bridegroom. June Walkow, Manchester, was the maid of honor, and Fred Worden, Jr., 4221 Cedar Lake, was the best man.

The newlyweds are now at home in Chelsea. He is employed by Chrysler Corp. at their plant on Zeeb Rd.

Fifty years old and more than a quarter of a million strong, the Jaycees of the United States work for community betterment in 6,400 communities in the nation.



APRIL WEDDING: Mr. and Mrs. Harry Hadley, 15500 Cassidy Rd., Grass Lake, announce the engagement of their daughter, Darlene F., to James C. Lyster. His parents are Mr. and Mrs. Clifford Lyster, 15 Sycamore Dr. Miss Hadley and her fiancé plan an April wedding.

First Aid Classes Getting Underway

If you are among the many untrained people in our country who have to stand by helplessly and watch an injured person, perhaps a child or a loved one die because you could not help, then you should register immediately for a Red Cross First Aid Class.

Classes are available on any of three different week nights. They will start on Tuesday, Jan. 20, Wednesday, Jan. 21, and Thursday, Jan. 22. They will meet once a week from 7 to 9 p.m., for six consecutive weeks. You may register for any one of the three classes.

The classes will be taught by trained Red Cross volunteers. The classes are free with a 75-cent charge made for the textbook.

Course content will include not only lifesaving first aid skills and techniques, but also stress accident prevention, especially in the home. Some specific areas covered include bleeding, artificial respiration, shock, burns, fractures, and common emergencies.

Register by calling the Red Cross at 971-5890. Your Red Cross is a participating member of the United Fund.

Home Economics Study Groups Calendar
Monday, Jan. 26 - Dexter, home of Mrs. R. Meyer, 3490 Hudson, Dexter.
Wednesday, Jan. 29 - Arborites, home of Mrs. Eugene Hirth, 114 Virginia, Ann Arbor.

Club and Social Activities

BETA SIGMA PHI
Beta Sigma Phi met Monday, Jan. 19 at the home of Mrs. Clarence Snyder, 5840 Storer Rd. Two cultural presentations were made following the theme established for the year, "The Grand Tour." Mrs. Ralph Trinkle presented the polar region and Mrs. Alfred Smith presented Africa. Plans were made for "Husband's Night" and spring rushing, which will be held in the near future. Refreshments were served by the hostess.

The next meeting will be Monday, Feb. 2 at 8 p.m. at Mrs. Ralph Trinkle's, 12240 Scioto Church Rd.

AGR. ENTREPRENEURS
Thirteen families were present at the meeting of the Agricultural Entrepreneurs at the home of Mr. and Mrs. Keith Bradbury Thursday evening.

The meeting was called to order by the chairman, Keith Bradbury, with the pledge to the flag and the Farm Bureau Creed recited. The secretary's minutes were read and approved. Regular reports were given. A discussion was held on "School Curriculum." Feb. 28 has been set as the date for the card party at the home of the Keith Bradburys. Refreshments will be cake, sandwiches or Jell-o.

The next meeting will be held at the home of Mr. and Mrs. Leonard McCalla.

SENIOR CITIZENS
The Senior Citizens' Pot-Luck birthday party was held Thursday, Jan. 15 at Korner House. Forty members gathered to honor Herschel O'Dell, Mrs. Winifred Coffron and Mrs. Catherine Dorer, the January Birthday honorees.

The pink birthday table was adorned with pink candles and a birthday cake decorated with a show scene furnished by Miss Nina Greening. Mrs. Anna Laban and Mr. and Mrs. Vern List were the hostesses. After dinner, the remainder of the evening was spent in playing progressive euchre.

ESTHER CHAPTER
Esther Chapter of the Congregational church met Thursday, Jan. 18 at the home of Mrs. Richard Smith. Mrs. Laurene White gave the devotion, reading from "Words, I Live By."

The evening was spent sewing squares for lap robes, while members discussed plans for the spring salad luncheon for the public given each spring by the Women's Fellowship. The date of March 18 was set. Mrs. Smith as hostess, served lunch to the group following the meeting.

The next meeting will be at the home of Mrs. Martin Steinbach, Thursday, Feb. 19.

Some stretch ski-suits feature matching helmets.



ENGAGED: Mr. and Mrs. Lewis Fish, 3451 Waltrous Rd., announce the engagement of their daughter, May, a senior at Chelsea High school, to Spec. 5 Al Thurman, the son of Mr. and Mrs. Arnall Thurman of Key Largo, Fla. Thurman is an army serviceman with the 25th Infantry Division. A July 11 wedding is planned.

4-H Clubs

WATERLOO CLUB
On Thursday, Jan. 15, the Waterloo 4-H club held their monthly meeting with 30 members present. President Wesley Schulz called the meeting to order. We discussed getting new flags, the flag committee will have a full report at our next meeting. Terri Gilbreath was appointed Secretary Pro-Tem until Karen Harr is back.

The club planned a skating party for Sunday, Jan. 18. The district No. 2 pot-luck supper was discussed. Our club will do clean-up. We decided to send post-cards to club members with full details of the supper.

The meeting was adjourned by saying the 4-H pledge. The Schulz were the monthly hosts and served refreshments.

Tracy Lewis, scribe.

CHELSEA SUBURBANETTES
The regular meeting of the Chelsea Suburbanettes was held Thursday, Jan. 15 at the Chelsea Public Library. Co-hostesses were Mrs. Duane (Joan) Luick and Mrs. John (Noel) Laraway.

Elvyn Sells, a representative from the March of Dimes, was guest speaker. She told the group of the many projects that the March of Dimes has here in the county as well as nationally. She also told of the many hours contributed by the volunteers.

The February meeting will be held at the home of Mrs. Bud (Jeanette) Hankard. It will be a craft night.

Telephone Your Club News To GR 5-3581.

Football Heroes To Model for Dimes Fund

University of Michigan All Americans, Captain Jim Mandich and Safety Tom Curtis, will be models in the March of Dimes fashion show and luncheon to be held at 1 p.m. Jan. 31 at the Ann Arbor Town Club.

Team Captain Jim Mandich, a senior from Solon, O., and elected Most Valuable Player by his teammates, was named to the Associated Press and United Press International All-American teams. He was also selected first team All-American on both the Look Magazine and Kodak teams.

Tom Curtis was also named All-American by the AP and UPI. He intercepted two passes in the Ohio State game for a career total of 25. He set a new NCAA mark for return yardage on pass interceptions.

Fashions will be by Goodyear's and Wagner's at Goodyear's.

Others modeling in the fashion show will be Miss Catherine O'Connor, Mrs. Gerald O'Connor, Mrs. Edward Connors, Mrs. Craig Barlow, Mrs. Robert Bliss, Mrs. Glen Schenbeckler, Mrs. Richard Balzhiser, Miss Barbara Burck, Mrs. Max Moon and Miss Lani Loken.

Reservations may be made by calling Mrs. Gordon Johnston at 663-1309 or Mrs. Robert Parker at 665-7134. Mrs. Parker is in charge of the event. Donations will benefit the March of Dimes.

Swimming Course Offered for Boy Scouts

A swimming and life saving course for Boy Scouts in Iroquois District of Portage Trails Council, will be offered at the YMCA, corner of Fourth and William Sts., Ann Arbor, for eight weeks, beginning Thursday, Feb. 12. The course will be held each Thursday evening, from 7 until 8:15 p.m.

Any scout who has passed his first class swimming requirement may participate in the course, by submitting an application, and \$5 fee, to the Iroquois District Swim, Portage Trails Council, BSA, 2163 W. Stadium Blvd., Ann Arbor.

The course will include instruction and the opportunity to complete requirements for the swimming and life-saving merit badges. Iroquois District scouts reside in Dexter, Chelsea, Milan, Saline, Manchester, and Whitmore Lake.

Proposed Evening Classes Cancelled

Due to the lack of registrants, the Continuing Education Program of the Dexter Community Schools is sorry to announce that the Typing and Landscaping classes must be cancelled for the Spring 1970 session.



PAT'S CORNER

BY PAT DITTMAR
Home Economist
Chelsea Milling Co.

You say you would like to make Crepes Suzette, or a Strawberry Blintze, or even a Baked Alaska for your family, but you just don't have the time. You lead such an active life that you don't have your whole afternoon free to make a special dessert for the family. Here is your solution... try our pudding cake. It's not only easy to prepare, but also requires no 'extra fancy' ingredients.

- HONEY DATE PUDDING**
(6 servings)
- 1 package "JIFFY" Honey Date Muffin
 - 2 tablespoons milk
 - 1 egg
 - 1 teaspoon vanilla
 - 1 1/2 cup milk
 - 3/4 cup margarine or butter
 - 1 package "JIFFY" White Frosting Mix
 - 1 teaspoon lemon flavoring
- Heat oven to 325°.
 - Blend muffin mix, 2 tablespoons milk, egg and vanilla.
 - Spread in square pan, 8 x 8 x 2 inches.
 - In saucepan heat milk, margarine, frosting mix and flavoring. When butter is melted pour mixture over batter in pan.
 - Bake 35 to 40 minutes.
- Caramel variation: Prepare recipe above except substitute "JIFFY" Caramel Frosting Mix for White Frosting Mix and lemon flavoring.

Southern Michigan Residents Protected Against Flu Epidemic

Masses of flu sufferers won't be found this winter, at least not in southern Michigan, according to Dr. Willard Lenz, director of epidemiology for the Detroit-Wayne County Health Department.

For the first time in three years the populace has been effectively protected from the flu epidemics which have plagued the lower Michigan area communities in the past.

Enough persons have developed immunities to current strains of flu viruses or been vaccinated against them to prevent an epidemic from taking hold, explained Lenz.

SEE-THROUGH FURNITURE

See-through furniture is gaining popularity. Glass and plexiglass are teamed with metal, wood or sculptured forms to add a dash of excitement to tables and chairs.

VILLAGE BEAUTY SALON

NOW OPEN MONDAYS

Wash and Set, \$3.50 - Hair Cut, \$2.50

LORETTA PANNONE, Owner - Operator

Cindy Niehaus - Eula Montgomery - Jean Sweet

8:30 a.m. - 4:30 p.m. Tuesday - Friday, Saturday until 3 p.m.

Evenings by appointment. Phone 475-5421

Girl Scouts...

TROOP 47
Troop 47 met Thursday, Jan. 15 in their patrols.

In each patrol of troop 47 we have a scribe. Here is what some of the scribes reported.

Patrol 2 opened the meeting with a flag ceremony.

Kathy Fairbanks, scribe.

Patrol 1 took dues. The names in our patrol are Beth Collins, Pam Greenleaf, Sherry Moore, and Lee Thornbury. In our patrol we are working on badges. The names of the badges are Hospitality, Pen Pal, and Personal Health.

Beth Collins, scribe.

Patrol 4 leader is Debbie Hawthorth, assisted by Penny Collinsworth. Treasurer is Susan Frisbie and scribe is Karen Kern.

Karen Kern, scribe.

Patrol 3 selected our patrol name and collected dues.

Patsy Foytic, scribe.

That is all the patrols said.

Kathy Fairbanks, scribe.



CARPET SALE ENDS SATURDAY

This Sale - the greatest in our history - ends this Saturday, Jan. 24. Take advantage now of these real savings before spring price increases!

| LANDMARK | SHAGTASTIC | LAUREL RIDGE | TOWN PLACE |
|---|---|---|--|
| Textured Loop Pile Nylon | 2" NYLON PILE SHAG | Multi-Level Cut & Uncut | One Level Cut and Uncut Acrylic |
| INSTALLED \$6.95 | INSTALLED \$8.95 | INSTALLED \$9.95 | INSTALLED \$12.95 |
| REGULARLY \$8.59 | REGULARLY \$10.59 | REGULARLY \$11.59 | REGULARLY \$14.59 |
| 6 Colors. | 21 Captivating Colorations. | 14 Multi-Colorations. | 24 Colors. One of the best carpets we have ever had. |
| 45-oz. sponge rubber waffle pad included. | 62-oz. sponge rubber waffle pad included. | 62-oz. sponge rubber waffle pad included. | 62-oz. sponge rubber waffle pad included. |

TIPS

for your

TOP

from



TODDY and FRAN

If just once you face a Monday morning crisis—a big opportunity at which you need to look your best—if you look in the mirror in despair, having spent the week-end on the ski hill or snowmobile, and then if you can reach for your coiffed wig, pin it on in seconds, and take off looking tops—well, you'll be a wig advocate forever. We have some beauties that are incredibly low priced in addition to our natural human hair brand AND we have a wig specialist. Call us

Magic Mirror Beauty Salon
Phone 665-0816
2845 Jackson Rd., Ann Arbor

OTHER BROADLOOM CARPETS

15% OFF

Choose From Over 2,000 Colors and Textures

Prices apply to all carpets except where manufacturer's policy strictly prohibits.

CARPET INSTALLATION

We will install new or used carpet. Yours or ours. Call 475-8621 and ask for a quotation.

CARPET SERVICE

- ★ BURNS MENDED
- ★ DAMAGE REPAIRS
- ★ STAIRS SHIFTED
- ★ CLEANING
- ★ ASK FOR AN ESTIMATE.

KITCHEN CARPET

BATHROOM CARPET

All Rubberback

10% OFF

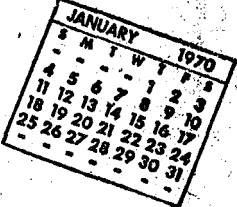
TWEEDS - PLAINS - PATTERNS

Merkel Brothers

CHELSEA

PHONE 475-8621

Community Calendar



Olive Lodge No. 156 F&AM, M. M. degree, Tuesday, Jan. 27 at 7:30 p.m.

Olive Lodge 156 F&AM Masonic Banquet, Saturday, Jan. 24, 7 p.m. at St. Paul church. For reservations call Don Dancer, 475-7863 by Jan. 21.

Wrestlers Enter Tourney At Howell

Chelsea will travel to Howell Saturday, Jan. 24 for the Paul Bennett Invitational Wrestling Tournament. Chelsea will be competing against teams from Dexter, Brighton, Fowlerville, Galesburg-Augusta, Howell, Milford and Pinckney.

Wrestlers from Chelsea who will probably be wrestling are Mark Montagne, Jim Wencel, Tim Colvia, Karsten Kargel, and Dennis Brown.

Others who will wrestle are Tom Tirb, Steve Ersten, Jerry Kuhl, Jim Poertner, Bob Koenigter, Gary Montagne, Doug McDonald, and Randy Seitz.

Chelsea traveled to Milan, Thursday, Jan. 15 to wrestle Milan who is in their first year of competition in wrestling. Chelsea again crushed their opponent, 53-5, exhibiting a variety of pinning skills as they pinned 10 opponents out of a possible 12. Results were as follows.

At 98 lbs., Mark Montagne, pinned his opponent in the first round, 1:13; At 107 lbs., Mike Robbins was pinned by Milan's Rick Rangel; At 115, Tom Tirb defeated Tom Engles by a pin at 1:35; At 123, Jim Wencel pinned his opponent at 1:34; At 130, Jerry Kuhl pinned his man at 2:56; At 137, Jim Poertner pinned his opponent at 1:43; At 145, Gary Montagne pinned his man at 1:11; At 165, Tim Colvia defeated his man 16-0; At 175, Doug McDonald pinned at 4:27; At 185, Karsten Kargel pinned at 1:07; At heavyweight, Dennis Brown pinned at 1:14.

The Jan. 20 Chelsea-Holt meet saw Chelsea defeated, 28-14. Winners for Chelsea were at 98, Mark Montagne by decision, 8-0; 107 lbs., Jim Wencel by a pin at 1:40; 115 lbs., Tom Tirb by a decision 1-0; and heavyweight, Dennis Brown by a decision, 8-0.

Modern Mothers Child Study Club Tuesday, 8 p.m., at home of Mrs. Don Kvarnberg. Business meeting, casual dress.

Ann Arbor Chapter of "Parents Without Partners" monthly meeting, Friday, Jan. 23, St. Andrew's Episcopal church, N. Division St., Ann Arbor, 8:15 p.m. Speaker will be Robbie Robinson of the Ann Arbor Police Department who will discuss "Juvenile Problem."

Regular meeting of Chelsea Camera Club canceled for month of January.

American Legion and Auxiliary hospital equipment available by contacting either Mr. or Mrs. Eugene Martin, at 475-5867 after 4 p.m.

Young Homemakers Thursday, Jan. 22, home of Mrs. Bill Ames. Mrs. Reuben Lesser, co-hostess.

Inquiries regarding the Chelsea blood bank may be directed to Harold Jones at Cavanaugh Lake in the event that Mrs. Dudley Holmes is unavailable.

Past Noble Grand Club, home of Mrs. Homer Nixon, Jan. 22 at 7:30 p.m. Election of new officers.

TOPS Club at library, Wednesday afternoon group, 12:30 p.m. For information call 475-2592. Thursday evening group, 7 p.m. For information call 475-8720.

Additional Power Facilities Planned For Chelsea Area

Last week Consumers Power Co. had several crews of men and equipment working at the substation on Garfield St. which services the Village of Chelsea. Their purpose was to increase the transformer capacity from 3,000 to 5,000 kilowatts without a prolonged service interruption.

A Consumers Power Co. official stated that he hoped this did not cause any inconvenience to the customers of the Village of Chelsea.

Consumers Power Co. has plans for more improvements to continue to provide quality electric service.



WINNERS of the March of Dimes bowling tournament held in Chelsea Sunday, Jan. 11 through Tuesday, Jan. 20 are pictured with their trophies, donated by Chelsea Lanes. From the left seated, Mrs. Chad (Bea) Parish who rolled a 659 series; Mrs. Russell (Helen) Morgan, 666; and Mrs. Maynard (Peg) Poertner who topped all women with a 672 series. In the men's division Tony Wisniewski (top left) is first-place winner with 698; Ron

Walter second with 696, and that includes one game of 264; and third is Olie Johnson (not in photo) at 686. Some 469 bowlers entered their scores during the week in the tournament. The entry fee of \$1 was contributed to the March of Dimes. These winning scores will now be entered in Washtenaw county competition. Winners on a county-wide basis will be announced Monday, Jan. 26.

Police Attend Funeral for Slain Deputy

Members of the Chelsea Police Department were one of 47 different departments to attend the Monday morning, Jan. 19, funeral services for slain Deputy Frank Crumpton, in St. Ursula's Catholic Church, Ypsilanti.

Police Chief George Meranuck, Sergeant McCormick, Patrolman Pebbles and Patrolman McDougal attended the services for the 59-year-old deputy who was slain last Thursday, Jan. 15 by a prisoner he was transporting from the Washtenaw County Jail to Southern Michigan Prison, Jackson.

The Chelsea Police car was one of 34 police departmental cars in the funeral procession.

Band Concert Slated Sunday At High School

A concert featuring the Chelsea High school concert and symphony bands will be held Sunday, Feb. 1 at 3:30 p.m. in the Chelsea High school auditorium.

Warren Mayer is the director of the Symphony band and the Concert band is under the direction of Stewart Glazer.

The public is invited.

Proving Grounds Employee Dies In Auto Crash

Gerald E. Huston, an employee of Chrysler Proving Grounds since 1954, was fatally injured in an automobile accident Thursday, Jan. 15 near Manchester in Lenawee county.

Huston's pick-up truck hit a tree early Thursday morning. Funeral services were held at the Stevens-Bush Funeral Home Ypsilanti, Saturday, Jan. 17 for the 40-year-old Huston.

Personal Notes

Mrs. Owen G. May, who has been a patient at St. Joseph Mercy Hospital is now at the new extended care unit of the Chelsea Medical Center.

Senior Class Wins CHS Pep Week Contest

Senior spirit was chosen as the most capacious during the week preceding the Chelsea-Dexter basketball game. The week prior to the Dexter game is designated as "Pep Week," and the class with the "mostest" is rated the night of the game.

The senior's theme, "Previews of the Game," was carried out with the slogan appearing in one of the school's hallways. On the sign appeared pictures of what should and indeed did, happen at the Chelsea-Dexter game Friday, Jan. 16. Chelsea's defeat of Dexter, 24-14, was the final result.

The second place award was given to the sophomore class and their theme "Dexter is All Washed Up." This class had a bathtub in the hall near their slogan. The third-place prize went to the freshmen for their efforts in decorating the gym for the basketball contest. Posters reading "Go, Team, Go" and "Fight Chelsea" adorned both the school hallways and the gym walls due to the efforts of the freshmen.

Juniors, who had won the competition the previous year, placed fourth with their theme, "We Love You Bulldogs."

Winners were announced at half-time of the Chelsea-Dexter contest.

Subscribe today to The Standard!

DEATHS

Mrs. Elmer Below

Former Sharon Township Resident Dies Thursday

Mrs. Elmer (Marie Frances) Below, 987 S. Fletcher Rd., died Thursday, Jan. 15, at St. Joseph Mercy Hospital.

She was born Nov. 13, 1912, the daughter of Charles and Bertha Marshall. She married Elmer Below in October of 1936. They lived in Sharon township until they moved to their present home. He survives.

Mrs. Below was a member of St. Mary Catholic church of Manchester.

Survivors include her husband; one son, Dwight of Britain; a daughter, Mrs. Harold (Dolores) Strahley of Grass Lake; her mother, Mrs. Bertha Strahley, and a sister, Mrs. Irene Watson, both of Michigan Center; several nieces, nephews and cousins.

Funeral services were held at 1 p.m. Monday, Jan. 19, at St. Mary Catholic church, the Rev. Fr. Daniel Emerine, and the Rev. Fr. Raymond Schlunk officiating. Burial followed at St. Mary's Cemetery, Manchester.

The rosary was recited Sunday, Jan. 18 at the Jenter Funeral Home, Manchester.

Frederick E. Rehwert

Had Been Guard at Cassidy Lake School Until Retiring

Frederick E. Rehwert, 67, of 525 N. Main St., died Monday, Jan. 19 at St. Joseph Mercy Hospital, Ann Arbor. He had been employed as a guard at Cassidy Lake Technical School for 17 years, until his retirement about three years ago.

He was born in Detroit, April 5, 1902, a son of Frederick and Amalia Adamo Rehwert.

Surviving are two sisters, Mrs. Anna D. Sheill of Detroit and Mrs. Edith Aberle of Monroe, Wash., as well as four nephews, one great-nephew and one great-niece.

Funeral services were held at 1 p.m. Wednesday, Jan. 21 at the Burghardt Funeral Home with the Rev. Daniel Keln officiating. Burial followed in Woodmere Cemetery, Detroit.

SOLDIERS MAY BE CHARGED

Army sources report charges may be filed against most of the 24 soldiers and former soldiers under investigation in the alleged massacre of Vietnamese civilians at My Lai. The probe may take about four months.

Mrs. Christian Hirth

Chelsea Woman's Mother Dies After Long Illness

Mrs. Christian F. (Martha K.) Hirth, formerly of 7301 Waters Rd., died Monday, Jan. 19 at the Whitehall Convalescent Home after a long illness.

Born Jan. 10, 1886 in Scio township, 84-year-old Mrs. Hirth was the daughter of Adolph and Lydia Beck Jedele. She was married to Mr. Hirth on March 6, 1907. He preceded her in death on Feb. 15, 1932.

Mrs. Hirth was a member of the Salem Lutheran Church of Scio, the Ladies Aid of the church, and the Washtenaw Farm Bureau.

Surviving are one son, Howard Hirth, of Ann Arbor; two daughters, Mrs. Alvin (Ruth) Eschelbach, 234 Harrison; and Mrs. Ernest (Lucille) Kugler, of Allen Park; a grandson, Charles Hirth, of California; and a granddaughter, Mrs. Eugene (Catherine) Brown, of Ypsilanti.

Funeral services will be held Thursday, Jan. 22 at 1 p.m., from the Muehlig Funeral Chapel, with the Rev. Lyle Hallauer officiating. Burial will be made in Bethlehem Cemetery.

Memorial contributions may be made to the Salem Church Building Fund.

Basic Skills Tests Are Being Given In School District

Michigan Assessment of Basic Skills is being administered through Friday, Jan. 30 in Chelsea grades 4 and 7, according to George Bergman, counselor in the Chelsea school system.

The program of testing began Monday, Jan. 19 in the district under the auspices of the Department of Education of the State of Michigan.

The exams cover four areas with a fifth section of general information. The three-hour exam covers vocabulary, reading comprehension, English expression, and mathematics.

The testing is part of a statewide testing program devised by the Education Testing Service, Princeton, N. J., designed to aid planning of educational systems in the state. ETS is the establishment which is involved with the college admission exams and other aptitude and skill assessment exams.



W. E. "BILL" HERRING

W. E. Herring Named Head for Dana Division

Dana Corp. is combining its Power Equipment Division in Toledo, O., and its Power Take-Off Division in Chelsea, and a former Chelsea resident will be its new general manager, it was announced jointly by Vice-Presidents M. E. Gavin, and D. D. Minshall.

W. E. "Bill" Herring, Jr., will be in charge of the combined division which will be known as the Power Equipment Division and in the new arrangement the Power Take-Off plant in Chelsea will serve as a manufacturing facility for the division.

Herring, a graduate of Michigan State University, joined Dana in 1956. He has served as sales manager for the Chelsea plant. He was later named sales manager, diversified products, for the Clutch and Marine Division, Fort Wayne, and was manager of Drive Train Components for Dana Parts Co. when he was named general manager of the Power Equipment Division in 1967. Herring was chairman of the 1969 TBEA convention.

Mrs. Ray W. Niles, 2905 S. Fletcher Rd., recently returned from visiting her new grandson, Shawn Edward, born to Mr. and Mrs. R. E. Oliver of Tyler, Texas, Dec. 22. Mrs. Oliver is the former Zoa Jane Niles.

DELAY MAY PROVE COSTLY...

★ PLAN TO BUILD
★ BUILD from a PLAN

Check Our File of More Than 500 Designs
From \$9.50 per set

Your investment in a new home deserves the protection of the best in professional planning.

The designs in our plan services are prepared by experienced designers... assuring you of—

- ★ FREE CIRCULATION
- ★ EXCEPTIONAL STORAGE SPACE
- ★ EFFICIENT KITCHEN PLANNING

Stop in soon and take home a few of our plan books for study at your leisure.

Compare the Ways To Build... You'll Find

YOU GET MORE
FOR YOUR BUILDING DOLLAR

- at -

CHELSEA LUMBER CO.

DIAL GR 5-3391

MAY WE BID OR ESTIMATE YOUR BUILDING COSTS?

GAMBLES WINTER TIRE SPECTACULAR!!

DON'T SLIP - GET GRIP!
with Crest Full 4-Ply Nylon Cord
ICE 'N SNOW TIRES



GUARANTEED

Without limit as to months or miles against defects in materials and workmanship... and against failure due to road hazards for life of original tread.

Should defect or failure occur, we repair or replace tire, charging only for treadwear used on pro-rated basis.

Brand New!

Not Recaps or Seconds!

While Stocks Last! No Trade-Ins Needed!

\$12.88

650 x 13
Tubeless
Blackwall
w/o Studs
Plus \$1.79 Fed. Excise Tax

Use Our Easy Pay Plan!

With Steel Studs Only \$4.99 More!

Get SUPER GO on ice, sleet or snow! Start when you want to, stop when you have to! Get 'em with optional tungsten steel studs for even greater road-biting traction.

2-710, M.D.

| TIRE SIZE | EACH | F.E. TAX | FREE | WHITEWALL ONLY |
|--------------|---------|----------|--------------|----------------|
| 750/775 x 14 | \$15.88 | \$2.20 | INSTALLATION | \$199 |
| 800/825 x 14 | \$16.88 | \$2.36 | | MORE |
| 670/725 x 15 | \$15.88 | \$2.21 | | |

SAVE NOW - CLOSE-OUT PRICES

SPECIAL

thru Wednesday, Jan. 28, 1970

**FISH & FRIES
& SHAKE**

95¢

Home of fine Brazier foods.

Dairy Queen
brazier

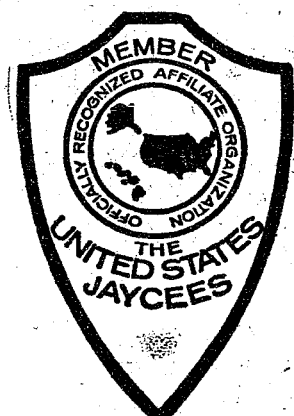
S. MAIN ST., CHELSEA



Hats Off To You-JAYCEES
NATIONAL JAYCEE WEEK ★ JAN. 18-26

Leadership!

**Jaycees Show
the Way! Here's
Our Salute to
Your
Achievements**

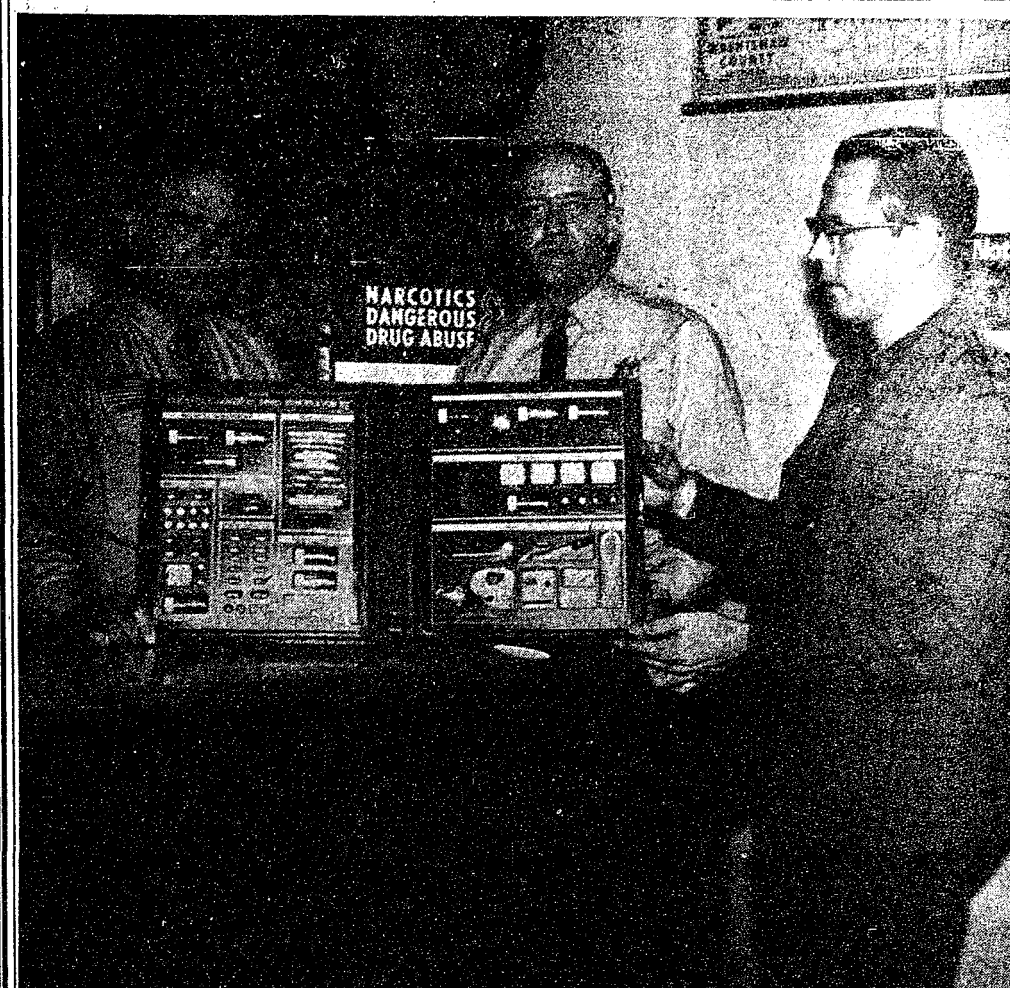


Our community, our state, our country needs leaders. But we can rest assured. Our Jaycees... young men of energy and action, ideas and ideals... are working today for a better tomorrow, aiming toward that leadership which is so essential a part of our present and future progress. To our local Jaycees, congratulations!

This Message Sponsored By the Following Chelsea Businesses and Industries

G. A. Sales & Service, Inc.
Chelsea Heat Treating, Inc.
Wallace Wood Insurance
3-D Sales & Service, Inc.
Federal Screw Works
Dana Corporation

Chelsea Lanes
Leonard Eder & Son
Lime Spreading
A. D. Mayer, Inc.
North American Rockwell Corp.
Chrysler Corporation
Proving Grounds



A DRUG IDENTIFICATION KIT has been presented by the Chelsea Kiwanis Club to the Chelsea Police department to facilitate that department's efforts to alert the public to drug abuse. Sam Johnson, Kiwanian (right) displays the kit for Patrolman Schneider (center) and Police Chief George Meranuck. Kiwanis Clubs across the nation this year are making Operation Drug Alert a major club project.

Kiwanis Club, Police Join In 'Operation Drug Alert'

Hashish... Marijuana... Opium... Heroin... Would you recognize these? Would you know what to do to prevent their ill effects?

As part of Chelsea Kiwanis Club's efforts to alert the public to the dangers and ills of drug abuse, the Chelsea Kiwanis Club has aided similar efforts of the Chelsea Police Department by presenting it with a new drug identification kit.

"I give an illustration as to what certain drugs look like, what they do, and how to identify them," commented Patrolman Louis Schneider, who has been giving presentations to area groups interested in drug identification with the aid of a borrowed kit from the Washtenaw County Sheriff's Department.

"Actually, I speak from the standpoint of the law enforcement officer," continued Schneider. "Drugs are illegal, no matter what anyone may say, until the laws are changed, we must uphold the laws that we, the people, have made."

"I discuss the psychological and physical effects of marijuana. We also have a capsule, called a training capsule, which, when broken, gives off the aroma of the drug. There are none of the effects of marijuana, however," Schneider added, "just the aroma."

"Many other drugs are illustrated, as well as their effects. One of the most gruesome illustrations involves a picture of the arm of a person whose veins have collapsed due to heroin usage. We are shown what a heroin kit looks like, the spoon, cotton, syringe, eye dropper, and how they are used," noted Schneider.

"Perhaps the most important aspect of the presentation is the recognition of the usage of these drugs, and what parents or others should do if an antidote is required," noted Schneider, who punctuates his presentations with examples of cases he himself has seen.

Schneider also shows what "the real stuff" looks like. "At the end of the presentation, I usually display the drugs on the table for the audience to look over."

"This is definitely an important aspect of public education, with the increase in drug abuse which we in this country are experiencing. I usually leave a hand-out with each group which lists all drugs, their common names, symptoms and what to do if abuse has been discovered," Schneider concluded.

Schneider's next appearance is scheduled for Sunday, Jan. 25 with the Congregational church's Couples Club.

Any interested group may contact Patrolman Schneider for further information on how they may arrange to have him come to have him come to speak to their group.

**Your Detroit Ford Dealer's
the 1 with the A-1**



**This sign means
you can buy with
confidence. It's
only at your
Ford Dealer's.**

Why gamble? Your Ford Dealer's big selection of used cars is backed by his solid reputation as a businessman. You can count on getting a reliable used car because he hopes to sell you a new one some day.

**Your Ford Dealer's the 1 to see.
He's No. 1 in sales... No. 1 in savings**

PALMER MOTOR SALES, INC.

CHELSEA, MICHIGAN



START YOUR SET TODAY... SAVE OVER \$50

GENUINE IMPORTED
Translucent

Porcelain China

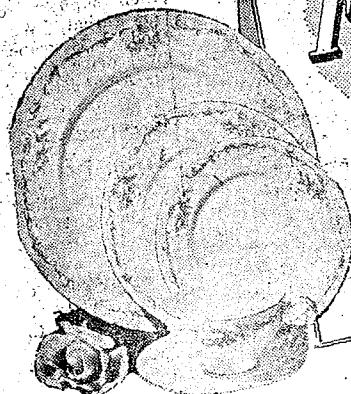
This is high quality porcelain china, fashioned by artisans with more than five centuries of heritage in the creation of fine dinnerware.

EXCLUSIVE! at **STOP & SHOP**

WEEKLY,

PURCHASE PLAN!

No Limits! One Piece at 39¢ with each \$3.00 Purchase



FREE!

A 99¢ Value!

Porcelain
Translucent China
DINNER PLATE

\$2.29

... with the purchase of a 4 PIECE PLACE SETTING
• Luncheon Plate
• Bread & Butter Plate
• Cup & Saucer

All 5 Pieces Only

Get these 5 lovely pieces at only 39¢ each on the scheduled weeks with every \$3.00 purchase. Buy 2 at 39¢ each with a \$6.00 purchase and so forth. See how easy it is to build a complete service for four or six or eight or even twelve.



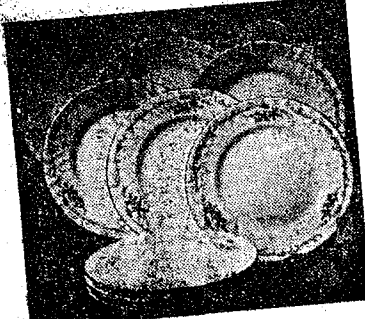
10 1/2" DINNER PLATES
Only 39¢ Each
with each \$3.00 purchase

1st Week
6th Week
11th Week



LUNCHEON OR SALAD PLATES
Only 39¢ Each
with each \$3.00 purchase

2nd Week
7th Week
12th Week



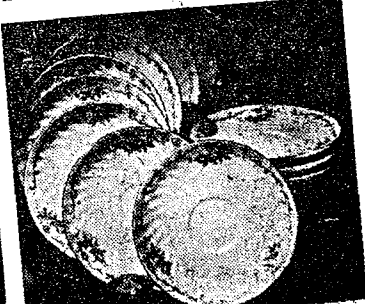
BREAD AND BUTTER PLATES
Only 39¢ Each
with each \$3.00 purchase

3rd Week
8th Week
13th Week



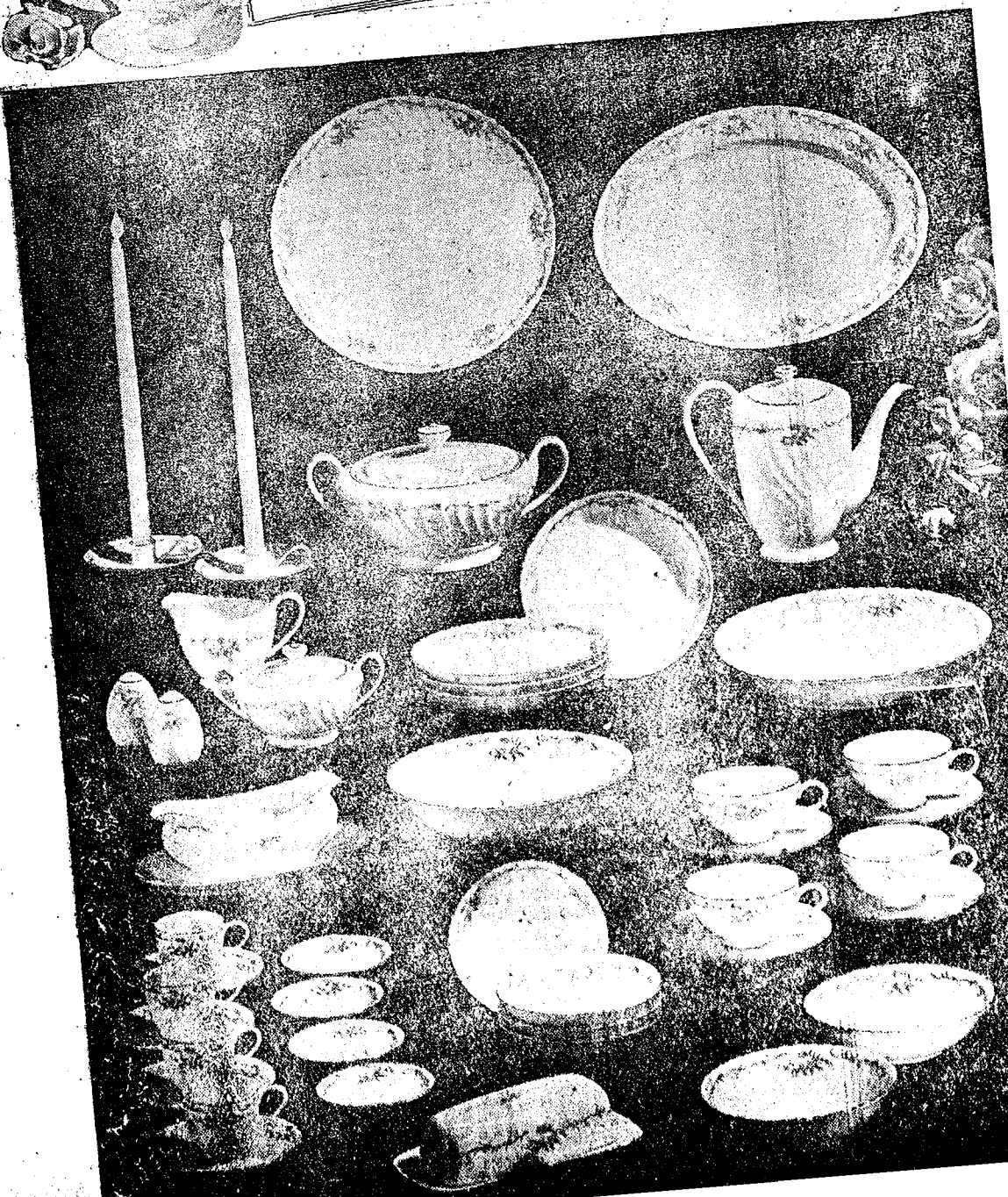
FINE CHINA CUPS
Only 39¢ Each
with each \$3.00 purchase

4th Week
9th Week
14th Week



FINE CHINA SAUCERS
Only 39¢ Each
with each \$3.00 purchase

5th Week
10th Week
15th Week



SAVE!

SAVE UP TO 50% AND MORE
ON THESE LOVELY ACCESSORIES

No Coupons! No Limits! Complete your set as quickly as you wish with these completer units at prices far below those at department and specialty stores.

- | | |
|-------------------------------------|--------------------------------------|
| Four 7 1/2" SOUP BOWLS ... \$2.29 | Large Covered Casserole \$4.99 |
| Four Cups and Saucers \$3.29 | Open Baker/Vegetable \$2.79 |
| Four Fruit/Dessert Bowls ... \$2.29 | 12" Round Chop Plate \$4.29 |
| Covered Sugar and Creamer . \$3.29 | 4 Demitasse Cups, Saucers ... \$2.69 |
| Full 9" Serving Bowl \$2.29 | Gravy Boat/Attached Saucer . \$3.29 |
| 8-Cup Coffee Server \$4.29 | Pair of Candle Holders \$1.99 |
| Two Cereal Bowls \$1.29 | Covered Butter Dish \$2.29 |
| 14" Heavy Platter \$4.29 | Salt and Pepper Shakers \$1.69 |
| | 4 Coaster/Ash Trays \$1.69 |



THE SUPERMARKET THAT'S JUST A LITTLE BIT BETTER

Stop & Shop

14901 Old U.S.-12
Corner at M-52
Chelsea



Stop & Shop's Fresh, Lean, All-American Beef

HAMBURGER 59^c lb.

3-Lb. Units or More

THE KNOW HOW OF INTELLIGENT MEAT BUYING IS REALLY THE 'KNOW WHERE'

Our customers have learned to depend on the outstanding quality of Stop & Shop meats — unfailing satisfaction with every cut they purchase. The finest quality, together with the expertise of our meat cutting experts, makes an unbeatable combination.

Prices Effective Wednesday, January 21
through Tuesday, January 27, 1970.



Farmer Peet's Semi-Boneless

HAMS Whole or Half 89^c lb.

"Triple R Farms" U.S.D.A. Choice

BONELESS ROUND STEAK \$1¹⁹ lb.

Tender, Delicious

CUBE STEAKS \$1²⁹ lb.

Tender, Sliced

BEEF LIVER 49^c lb.

Stop & Shop's Homemade

PORK SAUSAGE 69^c lb.

Lean, Tender, Boneless and Cubed

BREADED PORK CUTLETS 89^c lb.

"Triple R Farms"

U.S.D.A. Choice

BONELESS

ROLLED RUMP

or

SIRLOIN TIP

ROAST

\$1²⁹ lb.

"Triple R Farms" U.S.D.A. Choice

GROUND ROUND STEAK 89^c lb.

"Triple R Farms" U.S.D.A. Choice

SIRLOIN STEAK \$1²⁹ lb.

"Triple R Farms" U.S.D.A. Choice

CHUCK STEAKS 79^c lb.

"Triple R Farms" Michigan Grade 1

SLICED BOLOGNA 59^c lb.

Lean, Tender, Boneless and Cubed

BREADED VEAL CUTLETS 99^c lb.

"Triple R Farms" U.S.D.A. Choice

RIB STEAKS \$1⁰⁹ lb.

WE
RESERVE
THE
RIGHT
TO
LIMIT
QUANTITIES

For Your
Convenience
**OPEN
SUNDAY**
10 a.m. - 6 p.m.
All Sale Prices
Effective
Sundays

Sorry,
No Sales
To Dealers

STORE HOURS:
Monday, Tuesday,
Wednesday
9 a.m. - 6 p.m.
Thursday, Friday
9 a.m. - 9 p.m.
Saturday New Hours
8 a.m. - 7 p.m.
Sunday
10 a.m. - 6 p.m.

This Week's Feature!

Genuine Translucent Imported

Porcelain China
10¹/₄" Dinner Plate

39^c

with each
purchase

**COMPLETE
YOUR SET!**

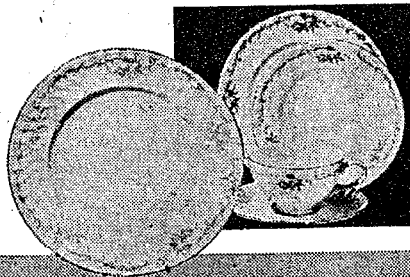
No Limits! These
complete units are
priced far below those
at department and
specialty stores. See
how easy it is to build
a complete service for
6 or 8 or even 12.

FINE PORCELAIN CHINA
FREE DINNER PLATE
with purchase of

4 Piece Place Setting consisting of:

- Luncheon/Salad Plate
- Bread & Butter Plate
- Cup and Saucer

All 5 Pieces
Only \$2²⁹



Farm Fresh Produce

Golden Ripe

BANANAS . . . 2 29^c

Sweet and Juicy

Temple Oranges 100 Size Doz. 69^c

Florida Fresh, Crisp

PASCAL CELERY Large Stalk 29^c

Fresh, Green

SPINACH 10-Oz. Cello Bag 29^c

Maxwell House - 1-Lb. Can

Coffee 59^c

Campbell's 10 3/4-Oz. Can

Tomato Soup 12^c

Hershey's Rich Chocolate - 1-Lb. Can

Syrup 19^c

Kleenex - 200-Count Box

Facial Tissues . . . 4 for \$1

Gorton's Fresh Frozen - 1-Lb. Pkg.

Fish Sticks 59^c

Nabisco - 1-Lb. Box

Saltine Crackers . . . 37^c

Cornish - Half Gallon

Ice Cream 49^c

Del Monte - 1-Lb. Can

Corn 15^c

Smucker's - 1-Lb., 4-Oz. Jar

Strawberry

Preserves 49^c

Gorton's Fresh Frozen - 8-Oz. Pkg.

Fish Puffs 43^c

Sunshine - 14 1/2-Oz. Pkg.

Hydrox Cookies . . . 43^c

Shur Good - 14-Oz. Pkg.

Devilsfood Cookies 49^c

PEPSI-COLA SPECIAL

10-oz. One-Way Bottles

8 PACK 89^c

FREE PITCHER

Instant Breakfast Drink

TANG 1-lb., 11-oz. Pitcher \$1²⁹

CRISCO

Finest Vegetable Shortening

3-lb. Can 69^c

AGRICULTURE IN ACTION

by GARY A. KLEINHENN
Michigan Farm Bureau

★ Grape Consumption Up Despite Boycott

Grape boycott attempts that have been lingering on for two grape harvesting seasons with the purpose of denying freedom of the markets to growers and consumers and to force unionization of workers in the vineyards is like the locomotive that never really got rolling and continues to lose steam.

The lack of locomotion is evidenced by the "Less than three percent of all grape workers who belong to the union," explained Jack Angell of American Farm Bureau. "Those who have signed, work for a few wineries under a union shop contract," he said.

"Instead of a migrant ill-paid, ill-housed work force," Angell continued, "the industry is non-migrant and stable, and is the highest paid farm work force in North America; and instead of the casual and careless use of pesticides in the California vineyards, as charged, supervision and care have reduced accidents to a minimum and Cesar Chavez (leader of the United Farm Workers Organizing Committee of the AFL-CIO) has yet to present substantive evidence to the contrary. Proof of the cynicism of this charge is his offer of a "moratorium" on the pesticide issue in return for a contract."

Further evidence of the boycott failure to halt the sale of grapes is presented by the California Table Grape Commission who report the "movement of table grapes from California to the nation's marketplaces followed a near-normal pattern in 1969 with shipments equaling the six-year crop average."

An upswing in consumer demand is also expected and should bring total 1969-70 movement to more than 24,000 carlots, which is the shipment average for grapes since 1963, the commission reported.

The bountiful success of the California vineyards which supplies the country with the majority of eating grapes is great encouragement to the preservation of an individual's freedom to market and the consumer's freedom to purchase goods at the marketplace.

Furthermore, it is a direct rebuttal, by the people through their support, to one labor leader's threat, "We will see that nobody eats grapes in America; we will drive grapes off every table in America."

Governor Approves Auto Insurance Law

Lansing—Gov. William G. Milliken has signed into law a bill to create an automobile insurance placement facility to replace the present voluntary assigned risk plan.

Under the bill which becomes law April 1, the facility will be supervised by the Insurance Bureau of the Michigan Department of Commerce and all auto insurance companies will be members of the facility. The new law also will establish a file and use procedure for rate changes on property insurance similar to the procedure for casualty insurance.

MOST POPULAR

The Baltimore Orioles attracted 216,390 fans to Tiger Stadium for nine games in 1969, more than any other visiting club.

AGE
23

**Married
Male Driver**

Your A-O man will save
you money on your car
insurance. No sur-
charge or higher rate.
See your A-O man —
he's all out for you.

**A. D. MAYER
AGENCY, INC.**

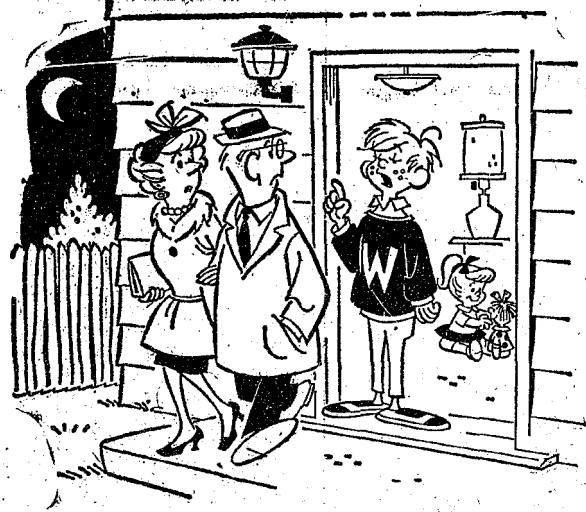
Your Protection Is Our Business
Phone 479-5061

115 Park St. Chelsea

**Auto-Owners
INSURANCE COMPANY**
Home office at Lansing, Michigan

McKUNE MEMORIAL LIBRARY
CHELSEA, MICHIGAN

Generation Gap U.S.A.



"One more thing - in case of emergency, what's the number of your grocer?"



Washington Report by Congressman MARVIN L. ESCH

While crime and fear, of crime spread in a truly alarming manner, a sluggish Congress has failed to give even proper consideration to President Nixon's anti-crime proposals, let alone pass meaningful legislation. It is impossible to justify such inaction.

Organized crime, clearly a federal responsibility, engages in a known to us all including the variety of damaging activities: corruption of individuals and units of government and private institutions. It is, as President Nixon noted, "a totalitarian and closed society operating within an open and democratic one."

The President has recommended immunity from prosecution against persons on the basis of their testimony though they would be subject to prosecution based on other evidence. (Refusal to testify under this immunity would constitute contempt punishable by imprisonment. This provision will help in the gathering of evidence against the leaders of organized crime.)

The President also asked for a new law to make bribery of police or other local officials a federal crime. And he asked for additional powers to fight gambling. While gambling is viewed as only a minor crime by many and by others as no crime at all, it provides revenue for far more serious crimes, such as drugs. As is so painfully evident, illegal drugs are destroying the lives of thousands of high school and college students.

The legislation suggested by the President would not mean the end of organized crime, obviously. But it would give the federal government some needed tools to better wage the fight. The President's recommendations, I am happy to say, are along the line of ones I made in the summer of 1968 after a study of the matter.

There is irony in our need to get Congress moving on the President's proposals. Public apathy, perhaps the Casa Nostra's greatest strength, requires that we give crime fighters at all levels every proper power. Yet, that same apathy is one reason Congress has failed to move.

But Congress has a leadership function it must fulfill even in the absence of desired public concern. For the sad truth of the matter is that in too many cases crime appears to pay, in itself a corrupting influence on our society.

REPORT OF CONDITION OF

Chelsea State Bank

of Chelsea, Michigan, at the close of business December 31, 1969, a state banking institution organized and operating under the banking laws of this State and a member of the Federal Reserve System. Published in accordance with a call made by the State Banking Authorities and by the Federal Reserve Bank of this District.

| ASSETS | | Dollars | Cts. |
|--|--------------|------------------------|------|
| Cash and due from banks (including \$10,660.62 unposted debts) | | \$ 1,427,138.92 | |
| U. S. Treasury securities | | 3,745,934.63 | |
| Securities of other U. S. Government agencies and corporations | 150,000.00 | | |
| Obligations of States and political subdivisions | 2,244,396.30 | | |
| Other securities (including \$30,000 corporate stocks) | 78,350.00 | | |
| Federal funds sold and securities purchased under agreement to resell | 500,000.00 | | |
| Other loans | 9,825,152.11 | | |
| Bank premises, furniture and fixtures, and other assets representing bank premises | 369,226.09 | | |
| TOTAL ASSETS | | \$18,340,198.55 | |

| LIABILITIES | | Dollars | Cts. |
|--|------------------------|---------|------|
| Demand deposits of individuals, partnerships, and corporations | \$ 3,868,161.40 | | |
| Time and savings deposits of individuals, partnerships, and corporations | 10,923,712.68 | | |
| Deposits of United States Government | 171,899.90 | | |
| Deposits of States and political subdivisions | 1,208,716.44 | | |
| Certified and officers' checks, etc. | 86,297.83 | | |
| TOTAL DEPOSITS | \$16,258,787.75 | | |
| (a) Total demand deposits | 5,031,075.07 | | |
| (b) Total time and savings deposits | 11,227,712.68 | | |
| Other liabilities | 325,190.02 | | |
| TOTAL LIABILITIES | \$16,583,977.77 | | |

| RESERVES ON LOANS AND SECURITIES | | Dollars | Cts. |
|---|----------------------|---------|------|
| Reserve for bad debt losses on loans (set up pursuant to IRS rulings) | \$ 164,031.31 | | |
| TOTAL RESERVES ON LOANS AND SECURITIES | \$ 164,031.31 | | |

| CAPITAL ACCOUNTS | | Dollars | Cts. |
|--|------------------------|---------|------|
| Equity capital, total | \$ 1,592,089.47 | | |
| Common stock—total par value | 400,000.00 | | |
| (No. shares authorized 8,000) | | | |
| (No. shares outstanding 8,000) | | | |
| Surplus | 608,000.00 | | |
| Undivided profits | 492,189.47 | | |
| Reserve for contingencies and other capital reserves | 100,000.00 | | |
| TOTAL CAPITAL ACCOUNTS | \$ 1,592,089.47 | | |
| TOTAL LIABILITIES, RESERVES, AND CAPITAL ACCOUNTS | \$18,340,198.55 | | |

MEMORANDA

Average of total deposits for the 15 calendar days ending with call date \$16,087,426.36

Average of total loans for the 15 calendar days ending with call date 9,808,284.35

Deposits of the State of Michigan 15,711.65

I, Paul G. Schaible, Jr., Vice President & Cashier of the above-named bank, do hereby declare that this report of condition is true to the best of my knowledge and belief.

PAUL G. SCHAIBLE, JR.

We, the undersigned directors, attest the correctness of this report of condition and declare that it has been examined by us and to the best of our knowledge and belief is true and correct.

PAUL E. MANN
F. W. MERKEL
JOHN P. KEUSCH
Directors

State of Michigan, County of Washtenaw, ss:
Sworn to and subscribed before me this 14th day of January, 1970.
Peter C. Flintoft, Notary Public.
My commission expires Feb. 24, 1971.

CHELSEA VILLAGE COUNCIL PROCEEDINGS

January 6, 1970

Regular Session.
This meeting was called to order by President Pennington at 8:00 p.m.

Trustees present: Gorton, Musbach, Fuls, Clark, and Chandler. Absent: Miller.

The minutes of the regular meeting of December 16 were read and approved.

Several incidents involving the operation of snowmobiles within the Village of Chelsea were discussed. Chief Meranuck was instructed to enforce the laws controlling the operation and use of snowmobiles as in the past.

Mr. Richard Machnick was present and discussed with the Council his desire to have property which he owns on Gene Dr. rezoned. Mr. Machnick was informed as to the procedure for a rezoning request.

Harold Bable, Superintendent of the Electric & Water Department, discussed with the Council the power failure which occurred in the village on January 5. The Village Administrator was instructed to work with Superintendent Bable and contact an electrical engineer to make preliminary plans for a study on the electrical system.

Further discussion was held regarding phosphorus removal at the wastewater treatment plant. The firm of Pinkbeller, Pettis, & Strout is currently working with the state on the plans for phosphorus removal.

Trustee Musbach read a summary of the Fire Department activity for the month of November and December.

Trustee Clark read a summary of the Police Department activity for the month of December.

Motion by Gorton, supported by Musbach, to authorize the Village Administrator to draw up specifications for a new truck for the Department of Public Works and to advertise for bids. -Bids are to be submitted to the Administrator by 4:30 p.m., January 20, 1970. Roll call: Yeas all. Motion carried.

Motion by Fuls, supported by Gorton, that lease of space in the Municipal Building to Superior Ambulance Service not be renewed after April 30, 1970. Roll call: Yeas all. Motion carried.

Motion by Chandler, supported by Gorton, to establish power rates for customers who desire to purchase primary power from the Electric & Water Department. The new rate being identified shall be known as rate C. Roll call: Yeas all. Motion carried.

Motion by Clark, supported by Musbach, to authorize and direct the Clerk to issue checks in payment of bills as submitted. Roll call: Yeas all. Motion carried.

General Fund: \$9,053,118; Special Fund: Parking Meter Fund, \$12,955.

Motion by Fuls, supported by Gorton, to adjourn. Roll call: Yeas all. Motion carried.

Approved: January 10, 1970.
A. E. Fuls,
President Pro-Tem.
Richard Harvey, clerk.

January 13, 1970

Special Session.

This meeting was called to order by President Pennington at 7:30 p.m.

Trustees present: Miller, Gorton, Musbach, Fuls, Clark, and Chandler.

This session was called to discuss the 1970 budget requests as submitted by department heads and council members.

Motion by Chandler, supported by Clark to authorize and direct the Clerk to make payment to Herbert Hinz in the amount of \$350.00 for work in the Veterans Park area. Roll call: Yeas all. Motion carried.

PROCLAMATION

WHEREAS, the civic bodies and service organizations of our community and the departments of the local government recognize the great service rendered to this community by the Chelsea JAYCEES, and

WHEREAS, The United States JAYCEES and its affiliated state and local organizations have set aside the week of January 19-25, 1970, to observe the founding of the JAYCEES and to commemorate such founding by the selection of an outstanding man in this

community as the recipient of the Distinguished Service Award, and

WHEREAS, this organization of young men has contributed materially to the betterment of this community throughout the year.

THEREFORE, I, Harold Pennington, President of the Village of Chelsea, do hereby proclaim the week of January 19-25, 1970, as JAYCEE WEEK and urge all citizens of our community to give full consideration to the future services of the JAYCEES.

Dated: January 12, 1970.

H. L. Pennington,
Chelsea Village President.

Motion by Fuls, supported by Musbach, to adjourn. Roll call: Yeas all. Motion carried.

Meeting adjourned.

Approved: January 20, 1970.

A. E. Fuls,
President Pro-Tem.

Richard Harvey, clerk.

CHS Business Classes Visit Detroit Firms

Traipsing through snow and ice to get to Detroit, and then struggling through crowds of shoppers, were 80 Chelsea High school students and their instructor, Miss Marion Rybo, who went on a field trip Thursday, Jan. 15 to study the workings of the retail industry in Detroit.

"Snow and icy weather were our only complaints about an otherwise educational and entertaining day in the Detroit retailing industry," expressed Miss Rybo, commercial instructor at Chelsea High school and organizer of the trip.

"We left early Thursday morning for Crowley's where Chelsea High's two bookkeeping classes and office practice class were shown various retailing operations. These included advertising design, the workings of the credit and loan department; the auditing department; the payroll, purchasing and receiving departments; as well as the switchboard operations.

"We were taken on the tour by senior personnel men," Miss Rybo, "who were quite willing to answer all of our questions about the operation of the department store."

The group lunched at Hudson's and then toured the 13-story structure. The group was mainly interested in, recounted Miss Rybo, in the display work, merchandising and pricing.

"All this and we were back a little after 3 p.m.," exclaimed Miss Rybo. "We were quite impressed, needless to say, with the size and organization of the stores," she added.

When asked about a return visit, Miss Rybo asserted that it certainly would be a possibility, "except in better weather." The temperature Thursday fluctuated between -17 above and 3 below zero.

January 13, 1970

Special Session.

This meeting was called to order by President Pennington at 7:30 p.m.

Trustees present: Miller, Gorton, Musbach, Fuls, Clark, and Chandler.

This session was called to discuss the 1970 budget requests as submitted by department heads and council members.

Motion by Chandler, supported by Clark to authorize and direct the Clerk to make payment to Herbert Hinz in the amount of \$350.00 for work in the Veterans Park area. Roll call: Yeas all. Motion carried.

PROCLAMATION

WHEREAS, the civic bodies and service organizations of our community and the departments of the local government recognize the great service rendered to this community by the Chelsea JAYCEES, and

WHEREAS, The United States JAYCEES and its affiliated state and local organizations have set aside the week of January 19-25, 1970, to observe the founding of the JAYCEES and to commemorate such founding by the selection of an outstanding man in this

+ Services in Our Churches +

**ST. PAUL
UNITED CHURCH OF CHRIST**
The Rev. Warner Siebert, Pastor
Thursday, Jan. 22—
10:00 a.m.—Koinonia Study Group at home of B. Koch.
1:30 p.m.—Ceramics.

Saturday, Jan. 24—
9:00 a.m.—Confirmation class.
11:00 a.m.—Youth Choir, Masonic Banquet.

Sunday, Jan. 25—
9:15 a.m.—Church school.
10:30 a.m.—Worship. Sermon title: "The Hell There Is!"
7:00 p.m.—SYF
2:50 p.m.—Parsonage Open House.

Courier articles due.
Monday, Jan. 26—
7:30 p.m.—Teacher's meeting.

Tuesday, Jan. 27—
7:30 p.m.—Cabinet meeting.

**FIRST ASSEMBLY OF GOD
CHURCH**
The Rev. Thode B. Thodeson, Pastor
Sunday, Jan. 25—
10:00 a.m.—Sunday school.
11:00 a.m.—Worship service.
7:00 p.m.—Evangelistic service.

CHURCH OF CHRIST
13661 Old US-12, East
R. D. Parnell, Minister
Sunday, Jan. 25—
10:00 a.m.—Church school.
11:00 a.m.—Worship service.
6:00 p.m.—Worship service.

Wednesday, Jan. 28—
7:30 p.m.—Bible Study.

**ST. THOMAS
EVANGELICAL LUTHERAN**
Cor. Ellsworth and Haab Rds.
The Rev. Daniel L. Mattson, Pastor
Saturday, Jan. 24—
Confirmation class.

Sunday, Jan. 25—
10:00 a.m.—Worship service.
11:00 a.m.—Sunday school and Bible study.

WATERLOO VILLAGE CHURCH
United Methodist Church
The Rev. Donald Fry, Pastor
Sunday, Jan. 25—
10:00 a.m.—Sunday school.
11:15 a.m.—Worship service.
7:00 p.m.—Youth Fellowship.

**ST. BARNABAS
ERISOPAL CHURCH**
20500 Old US-12
The Rev. William D. Ladkau, Vicar
Sunday, Jan. 25—
11:00 a.m.—Morning Prayer.
11:00 a.m.—Church school and nursery.

**OUR SAVIOR
LUTHERAN CHURCH**
Rebekah Hall, 1194 M-62
The Rev. William H. Keller, Pastor
Sunday, Jan. 25—
9:15 a.m.—Sunday school.
10:30 a.m.—Worship service.

**SALEM GROVE
UNITED METHODIST CHURCH**
The Rev. Frederick Atkinson, Pastor
Sunday, Jan. 25—
10:00 a.m.—Sunday school.
11:15 a.m.—Worship service.

METHODIST HOME CHAPEL
The Rev. R. L. Clemans, Chaplain
V. O. Johnson, Administrator
Sunday, Jan. 25—
8:45 a.m.—Worship service.

CONGREGATIONAL CHURCH
(United Church of Christ)
The Rev. Daniel Keln, Pastor
Saturday, Jan. 24—
9:30 a.m.—Junior Choir rehearsal.

Sunday, Jan. 25—
10:00 a.m.—Worship service.
10:00 a.m.—Worship service and Sunday school.

Wednesday, Jan. 28—
6:30 a.m.—Men's breakfast.

7:30 p.m.—Senior choir rehearsal.

IMMANUEL BIBLE CHURCH
The Rev. Frank C. Frinkle, Pastor
145 E. Summit St.
Sunday, Jan. 25—
9:45 a.m.—Sunday school, nursery provided.
11:00 a.m.—Morning Worship, nursery provided.
7:00 p.m.—Evening service.

Every Wednesday—
Family hour, prayer meeting and Bible study.

**FIRST UNITED
PRESBYTERIAN CHURCH**
Unadilla
The Rev. T. H. Liang
Sunday, Jan. 25—
9:45 a.m.—Sunday school.
11:00 a.m.—Worship service.

Every Tuesday—
8:00 p.m.—Choir practice.

GREGORY BAPTIST CHURCH
The Rev. Grant Lapham, Pastor
Sunday, Jan. 25—
10:00 a.m.—Worship service.
11:15 a.m.—Church school.
6:30 p.m.—Baptist Youth Fellowship.

7:30 p.m.—Evening worship service.

**FIRST CHURCH OF CHRIST,
SCIENTIST**
1883 Washtenaw Ave., Ann Arbor
Sunday, Jan. 25—
10:30 a.m.—Morning service.
10:30 a.m.—Sunday school.
Lesson-sermon: "Truth."

ZION LUTHERAN CHURCH
Corner of Fletcher, Waters Rds.
(Rogers Corners)
Sunday, Jan. 25—
9:00 a.m.—Study in Sunday school.

10:15 a.m.—Family worship.
(Nursery available.)
Holy Communion first Sunday each month.

7:00 p.m.—Luther League

Monday, Jan. 26—
7:15 p.m.—Junior Choir.
8:00 p.m.—Senior choir.

Tuesday, Jan. 27—
7:30 p.m.—Women's shuffleboard.

Wednesday, Jan. 28—
7:30 p.m.—Sunday school staff.

**ST. JOHN'S EVANGELICAL
AND REFORMED CHURCH**
(United Church of Christ)
Francisco
The Rev. Robert Townley
Sunday, Jan. 25—
10:00 a.m.—Worship service.
10:20 a.m.—Church service.

**NORTH SHARON
COMMUNITY BIBLE CHURCH**
Sylvan and Washburn Rds.
The Rev. Paul Collins
Sunday, Jan. 25—
10:00 a.m.—Sunday school.
11:00 a.m.—Worship service.
6:30 p.m.—Young People's service.

7:00 p.m.—Evening service.
Every Wednesday—
7:30 p.m.—Prayer meeting.

**NORTH LAKE
UNITED METHODIST CHURCH**
The Rev. Frederick Atkinson, Pastor
Sunday, Jan. 25—
9:30 a.m.—Worship service.
10:30 a.m.—Sunday school.

**ST. JACOB EVANGELICAL
LUTHERAN CHURCH**
12501 Reithmiller Rd., Grass Lake
The Rev. Andrew Bloom, Pastor
Sunday, Jan. 25—
9:00 a.m.—Sunday school.
10:15 a.m.—Divine services.

CHELSEA BAPTIST CHURCH
The Rev. Elmer S. Steenson, Pastor
Sunday, Jan. 25—
10:00 a.m.—Sunday school.
11:00 a.m.—Worship service.
Nursery care available during Sunday school and worship service.

6:00 p.m.—Junior and Senior Baptist Youth Fellowship.
7:00 p.m.—Evening worship.

Every Wednesday—
7:30 p.m.—Bible study and prayer meeting.

**FIRST UNITED
METHODIST CHURCH**
The Rev. Robert Worgess, Pastor
Thursday, Jan. 22—
8:00 p.m.—Youth Council, home of Robert Robbins.

Sunday, Jan. 25—
9:00 a.m.—Church school.
10:00 a.m.—Church school.
10:00 a.m.—Worship service.
6:00 p.m.—Junior and Senior MYF.

8:00 p.m.—Youth Choir rehearsal.

Monday, Jan. 26—
8:00 p.m.—Committee on Finance meeting.

Wednesday, Jan. 28—
1:00 p.m.—WCS Executive Committee meeting.

**ST. MARY'S
CATHOLIC CHURCH**
The Rev. Fr. Francis Wahowiak
Saturday, Jan. 24—
10:00 a.m.—1:00 p.m.—Bake sale at K. of C. Hall.
7:30 p.m.—Mass.

Sunday, Jan. 25—
Masses at 6:30 a.m., 8:00 a.m., 10:00 a.m., and 11:30 a.m.

**ST. JOHN'S EVANGELICAL
AND REFORMED CHURCH**
(United Church of Christ)
Rogers Corners
The Rev. David J. Kleis
Sunday, Jan. 25—
9:30 a.m.—Sunday school.
10:30 a.m.—Church service.

**BETHEL EVANGELICAL AND
REFORMED CHURCH**
(United Church of Christ)
Freedom Township
The Rev. Roman A. Reineck
Sunday, Jan. 25—
10:00 a.m.—Worship.
10:00 a.m.—Sunday school.

United States Jaycees are now in their 50th year of service to your community.

SUNDAY'S SERMON

★ A Better World

Centuries pass, and mankind still awaits the end of all wars and the achievement of a world at peace. Each new decade, each new year, is looked to with hope and optimism. But, as the years go by, the search for a "perfect world" goes on and on.

What we should remember is that God did not promise us a perfect world, nor even a perfect life. The life of Christ upon earth was fulfilled as a life of dedication and great sacrifice, yet was subject to temptation.

The conflict between good and bad, right and wrong—it began in the Garden of Eden and will continue until the end of time. Down through the centuries however, there is a comparison that may be made. The source and the face of that which is bad, of the evil in the world, has often changed. The temptations of this generation are far different, more subtle and, surprisingly, more socially acceptable than in days of old.

What has remained the same is the continuity of the right way—a life in harmony with the commandments and the will of God. A life according to this simple pattern is a significant contribution to a better world.

Soil Conservation District Will Elect One New Director

The 21st annual meeting of the Washtenaw County Soil Conservation District has been set for Wednesday, Jan. 28 at 8 p.m. The meeting will be held at Pittsfield Grange Hall located on the Saline-Ann Arbor Rd.

Featured speaker for this event will be Murray Fishbeck who will present a slide illustrated travelogue on his recent People to People tour of several foreign countries. The tour, sponsored by the Michigan State Department of Agriculture, covered three weeks and took Fishbeck to Russia, Germany, Czechoslovakia, Belgium, Holland, Switzerland and Spain.

One district director will be elected by landowners and occupiers at the meeting to serve a three-year term. The term of Dale Lindemann of Dexter expires this year and he has decided not to run for re-election. Candidates for the office are Stephen Bristle, Manchester, and Ellis Pratt, also of Manchester. Nominations will also be accepted from the floor.

Refreshments and plenty of conservation atmosphere will round out the meeting program.

ON VOTING RIGHTS
Coming as a surprise to civil rights supporters, the House has passed President Nixon's nationwide voting-rights bill as a substitute for the existing law which applies only to the South. The roll call vote was 209-203.

Tomorrow has been cancelled.



BOWLING NEWS



Chelsea Suburban

Standings as of Jan. 14

| | W | L |
|---------------------|--------|--------|
| Foor Mobil | 45 1/2 | 26 1/2 |
| Dairy Queen Braizer | 44 | 28 |
| Patty Ann | 40 1/2 | 31 1/2 |
| Dana Corp. | 39 | 43 |
| G. A. Sales | 38 1/2 | 33 1/2 |
| Artex Roll-Ons | 34 1/2 | 37 1/2 |
| Waterloo Garage | 34 | 38 |
| Dancer's | 33 1/2 | 38 1/2 |
| Pittsfield Plastics | 32 1/2 | 39 1/2 |
| Chelsea Lanes | 32 | 40 |
| State Farm | 30 | 42 |
| C. E. Girls | 28 | 44 |

150 games and over: E. Yocum, 165; V. Harvey, 157; A. Hocking, 171-187; D. Haas, 219; N. Prater, 159; B. Smith, 150-154; M. Rush, 167; D. Hughes, 160-157-182; K. Snyder, 156-161; E. Clark, 167-168; K. Poertner, 171-154; K. Dove, 160; M. Olson, 150; B. Harley, 178-152; R. West, 182-152; R. McGibney, 158-180-170; R. Musbach, 184; S. Bowen, 151; D. England, 160; M. DeLaTorre, 150-167-154; M. Abdon, 151; G. Wilkerson, 175-157-150; V. Stewart, 156-153; W. Liebeck, 169-170; E. Williams, 154; M. L. Westcott, 198; C. Hansen, 154-157; R. Reithmiller, 154; S. Ratliff, 155; D. Kinsey, 197-157; J. Buku, 161-154; L. Jarvis, 152; L. Keezer, 156; N. Packard, 154.

425 series and over: D. Kinsey, 499; J. Buku, 462; L. Jarvis, 428; V. Stewart, 445; W. Liebeck, 434; E. Williams, 442; M. L. Westcott, 474; C. Hansen, 425; R. Musbach, 438; S. Bowen, 433; D. England, 433; M. DeLaTorre, 471; G. Wilkerson, 482; M. Olson, 429; B. Harley, 457; R. West, 483; R. McGibney, 508; D. Hughes, 499; K. Snyder, 450; E. Clark, 462; A. Hocking, 499; D. Haas, 491; B. Smith, 453.

Rolling Pin League

Standings as of Jan. 20

| | W | L |
|----------------|--------|--------|
| Jolly Mops | 50 | 30 |
| Moppy Uppers | 48 | 32 |
| Kookie Kutters | 45 | 35 |
| Kitchen Kapers | 44 1/2 | 35 1/2 |
| Grinders | 41 | 39 |
| Egg Beaters | 40 | 40 |
| Spooners | 39 1/2 | 40 1/2 |
| Coffee Cups | 36 1/2 | 43 1/2 |
| Mixers | 35 | 45 |
| Pots | 34 1/2 | 45 1/2 |
| Dish Rags | 34 | 46 |
| Brooms | 32 | 48 |

140 games and over: W. Landwehr, 152-149-143; E. Reynolds, 157; J. Rabbitt, 164-155; E. Giffin, 164; J. Rowe, 162-144; D. Butler, 157-151-172; P. Patterson, 153; P. Patterson, 142-164; E. Hunter, 144; D. Anderson, 141; G. Weiner, 153; J. Lewis, 142-143; G. Klink, 149; G. Blaess, 146-156; P. Borders, 183; S. Parker, 144-165; K. Del Prete, 169-168; M. Cook, 156; D. Sannes, 162; E. Miller, 140; T. Steinaway, 145; J. Hafner, 170-140-148; D. Keezer, 166-160; P. Pierce, 155-156; P. Harok, 147-144; M. Trask, 156-161; E. Whitaker, 143; A. Ehlola, 145-140; J. Priest, 154; J. Freeman, 140; H. Ringe, 157-146.

400 series and over: W. Landwehr, 444; E. Reynolds, 401; E. Giffin, 401; J. Rabbitt, 453; J. Rowe, 432; D. Butler, 480; P. Patterson, 444; M. Scott, 403; J. Lewis, 423; G. Klink, 403; G. Blaess, 435; S. Parker, 440; K. Del Prete, 438; D. Sannes, 427; J. Hafner, 458; D. Keezer, 447; P. Pierce, 426; P. Harok, 420; A. Ehlola, 414; J. Priest, 413; M. Trask, 456; J. Freeman, 405; H. Ringe, 427.

Splits converted: A. Pichea, 5-6-10; A. Ehlola, 5-10; J. Hafner, 6-7; S. Parker, 3-7-10; M. Cook, 4-7; E. Reynolds, 5-7; D. Butler, 5-6-10.

The Jaycees is a civic organization working for community betterment open to all young men 21 through 35 years of age.

The first Jaycee organization was formed in October of 1915 at the Mission Inn, St. Louis, Mo.

Tri-City Mixed League

Standings as of Jan. 16

| | W | L |
|------------------------|--------|--------|
| Foor Mobil | 46 1/2 | 33 1/2 |
| 3-D Sales & Service | 45 1/2 | 34 1/2 |
| Trail Blazers | 44 | 36 |
| Wolverine Early Birds | 42 1/2 | 37 1/2 |
| Jiffy Mixers | 41 1/2 | 38 1/2 |
| Smith Mobil | 41 | 39 |
| Chelsea Cleaners | 40 1/2 | 39 1/2 |
| Wolverine Tall & Small | 39 1/2 | 40 1/2 |
| Sprague Buick & Olds | 39 1/2 | 40 1/2 |
| Bibler-Frisinger | 37 1/2 | 42 1/2 |
| Odd Balls | 34 | 46 |
| Clear Lake | 28 | 52 |

500 series, men: G. Allen, 515; B. Cruse, 525; C. Dettling, 507; W. Griffith, 586; A. Hocking, 530; H. Kuzelmann, 527; C. Miller, 501; H. Sannes, 545; J. Stoffer, 502; T. Wisniewski, 505; R. V. Worden, 517.

200 games, men: B. Cruse, 205; C. Dettling, 203; W. Griffith, 234; A. Sannes, 224; T. Wisniewski, 209.

450 series, women: M. Ashmore, 477; R. Harok, 468; A. Hocking, 479; B. Parish, 545; C. Stoffer, 496; B. Wisniewski, 462; B. Worden, 458.

150 games, women: C. Allen, 152; M. Ashmore, 187-167; A. Hocking, 161-164-154; K. Maynard, 150; N. Miller, 176; B. Parish, 174-190-181; C. Stoffer, 167-192; M. Weston, 155-152; B. Wisniewski, 163-178.

Nite Owl League

Standings as of Jan. 19

| | W | L |
|----------------------|--------|--------|
| Foster's Men's Wear | 54 | 26 |
| Jack & Son Barbers | 46 | 34 |
| Gallup-Silkworth | 45 1/2 | 34 1/2 |
| Smith-Douglass | 43 | 37 |
| The Profs | 40 1/2 | 39 1/2 |
| Waterloo Garage | 40 1/2 | 39 1/2 |
| Town & Country Shell | 39 | 41 |
| Wahl's Dinos | 38 | 42 |
| Merkel Bros. | 37 | 43 |
| Willie's Five | 36 | 44 |
| Cavanaugh Lake Store | 35 | 45 |
| Smith's Mobil | 25 1/2 | 54 1/2 |

500 series: G. Schiller, 592; J. Eder, 587; M. Packard, 578; G. Packard, 572; P. McGibney, 555; D. Beeman, 543; R. Pursell, 527; E. Buku, 527; R. Kotar, 525; D. Warren, 518; R. Green, 516; G. Herriek, 513; D. Alexander, 511; J. Gaken, 508; G. Beeman, 508; J. Turner, 506; R. Kuschnapf, 501.

200 games: R. Kotar, 223; R. Foster, 221; G. Packard, 218; G. Schiller, 216-207; M. Packard, 213; P. McGibney, 209; J. Eder, 201; D. Beeman, 200.

Sunday Swingers

Mixed League

Standings as of Jan. 18

| | W | L |
|----------------|--------|--------|
| Chargers | 25 | 15 |
| Brand X | 24 | 16 |
| Limelights | 23 | 17 |
| Red Barons | 22 1/2 | 17 1/2 |
| Mark-Mark | 22 | 18 |
| Halfmoons | 21 1/2 | 18 1/2 |
| Newcomers | 21 | 19 |
| Odd Couples | 18 | 22 |
| 4-O's | 17 1/2 | 22 1/2 |
| Rolling Stones | 17 | 23 |
| 4-K's | 15 | 25 |
| Moonshiners | 14 1/2 | 25 1/2 |

Women's games over 150: L. Jarvis, 174; E. Seeger, 180-155; V. Stewart, 162-175; S. Bowen, 150-160; C. Padley, 163; J. Akin, 174.

Women's series over 450: E. Seeger, 463; V. Stewart, 458; S. Bowen, 452.

Men's games over 175: C. Koenn, 198; T. Tribble, 187; T. Stepp, 183; D. Rowe, 184; D. Meinhardt, 181; E. Duhamel, 181; H. Stewart, 180; J. Krichbaum, 192-185; T. Bowen, 185.

Men's series over 475: D. Rowe, 491; T. Bowen, 476; J. Krichbaum, 556; T. Tribble, 495; R. Nix, 487; E. Duhamel, 480.

Chelsea Women's League

Standings as of Jan. 14

| | W | L |
|------------------|--------|--------|
| Jiffy Mixers | 52 1/2 | 19 1/2 |
| Parish Cleaners | 48 | 24 |
| Chelsea Lanes | 45 | 27 |
| Chelsea Milling | 43 | 29 |
| Wolverine | 42 | 30 |
| Dancer's | 36 | 36 |
| The Pub | 35 | 37 |
| Chelsea Grinding | 30 1/2 | 41 1/2 |
| Koster's | 30 | 42 |
| E & H Builders | 27 | 45 |
| Palmer's | 22 | 50 |
| Schneiders | 21 | 51 |

150 games or better: C. Stoffer, 154; L. Poster, 162; E. Policht, 169; B. Eder, 161-152; H. Morgan, 175-171; A. Alexander, 171; M. E. Sutter, 170-166; D. Alber, 163-188; G. Kuhl, 158; A. Boham, 150-180-162; G. Baczynski, 158; L. Orlovski, 182-170; N. Popovich, 161-159; D. Fouty, 179; S. Ringe, 150-158; J. Salyer, 153; B. Larson, 153; B. Buxh, 154; A. Fahrner, 166; R. Hummel, 169-185; P. Wurster, 173-162; A. Knickerbocker, 151-158; N. K. n. 189-151; B. Wengren, 160; M. Kozminski, 179-151; M. Ritter, 187-160-180; P. Fitzsimmons, 170-183; S. Headrick, 167-166; P. Shoemaker, 186-166; P. Poertner, 220-180-167; P. Kooiman, 193; D. Sannes, 180; G. Schaefer, 169-168; L. Stewart, 183.

450 series or better: B. Eder, 462; H. Morgan, 471; M. E. Sutter, 468; D. Alber, 489; A. Boham, 492; L. Orlovski, 485; N. Popovich, 452; D. Fouty, 465; S. Ringe, 450; R. Hummel, 487; P. Wurster, 484; N. Kern, 486; M. Kozminski, 451; M. Ritter, 507; P. Fitzsimmons, 483; P. Shoemaker, 498; P. Poertner, 567; G. Schaefer, 471.

Charlie Brown and Snoopy's Friends

Standings as of Jan. 17

| | W | L |
|------------------------|--------|--------|
| Merdilizers | 30 | 21 |
| Snoopy Stars | 28 | 23 |
| Mark III | 28 | 23 |
| Blue Ribbons | 28 | 23 |
| Groovy Tootie Fritties | 28 | 23 |
| Archies | 27 1/2 | 23 1/2 |
| Good Guys | 25 | 28 |
| Banana Splits | 24 | 27 |
| The Purple Passions | 24 | 27 |
| Snoopy's | 23 | 28 |
| Chargers | 23 | 28 |
| Rolling Stones | 16 1/2 | 34 1/2 |

1000 Games: M. Cameron, 107; D. Beaumont, 118; A. Houle, 115; P. Greenleaf, 111-107; J. Elkins, 109-110; D. Craft, 145; C. Snyder, 100-128; S. Smyth, 101-122; M. Boyer, 103; S. Eyerla, 101; A. Houle, 133-134; B. Rosentreter, 116-120; R. Dove, 106; D. Morris, 101; D. Eisele, 133; K. Harris, 101; R. Collins, 116; M. Burnett, 124; J. Collins, 116-117; S. Palmer, 117; D. Bauer, 109; C. Sannes, 113; M. Bowen, 105-109; B. Lewis, 154-120; J. Milliken, 113; D. Alber, 135-136; D. Messner, 115-130; J. Sweet, 107-115; S. Klink, 107-101; S. Grob, 113; M. Pennington, 105-101; D. Craft, 135-100; S. Schulze, 104; B. Bennett, 106; R. Guenther, 106; G. Haller, 101-114.

200 series: S. Smyth, 223; A. Houle, 269; B. Rosentreter, 236; A. Houle, 203; P. Greenleaf, 218; J. Elkins, 219; D. Craft, 238; C. Snyder, 228; D. Eisele, 225; R. Collins, 201; M. Burnett, 215; J. Collins, 233; C. Sannes, 201; M. Bowen, 214; B. Lewis, 274; D. Alber, 271; D. Messner, 245; J. Sweet, 222; S. Klink, 208; S. Grob, 210; M. Pennington, 206; D. Craft, 235; G. Haller, 215.

Junior House League

Standings as of Jan. 15

| | W | L |
|----------------------|----|----|
| The Pub Bar | 78 | 41 |
| Chelsea Drug | 78 | 41 |
| J & S Tool Co. | 71 | 48 |
| Boyer Automotive | 71 | 48 |
| 3-D Sales & Service | 63 | 56 |
| FireLife Inn | 61 | 58 |
| Mid-State Finance | 60 | 59 |
| Gambles | 55 | 64 |
| Palmer T-Bird | 45 | 74 |
| Jiffy Mixers | 43 | 76 |
| Ann Arbor Centerless | 41 | 78 |

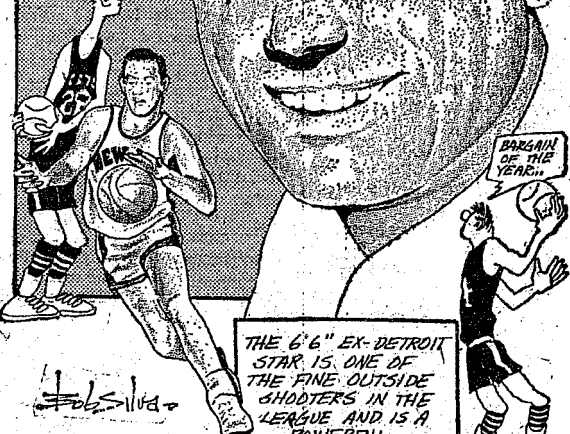
Over 200 games: W. Brown, 219; S. Policht, 217; A. Fleischmann, 210; D. Boven, 205; R. Schenk, 205.



SPORTS CORNER

NEVER SINCE THEY MADE A TRADE

DAVE DEBUSSCHERE, THE NEW YORK KNICKS HAVE BEEN THE WINNINGEST TEAM IN THE NBA...



205-203; D. Eder, 204; R. V. Worden, 204; L. Hocking, 203; N. Packard, 203.

Over 500 series: D. Eder, 585; R. Schenk, 584; N. Packard, 564; C. Koengeter, 561; O. Johnson, 548; S. Policht, 545; L. Hocking, 542; A. Fleischmann, 538; W. Beeman, 537; J. Hughes, 536; G. Beeman, 535; W. Brown, 523; R. V. Worden, 523; A. Wisniewski, 521; B. McClanahan, 517; R. H. Ringe, 514; D. Walz, 514; L. Salyer, 513; M. Sweet, 509; F. Barkley, 509; K. Larson, 507; S. Hopkins, 506; E. Buku, 505; K. Norris, 503; H. Kuzelmann, 503; P. Boham, 503.

Guys & Gals Mixed League Standings as of Jan. 15

| | W | L |
|------------------------|--------|--------|
| Murphy's Barber Shop | 43 1/2 | 21 1/2 |
| The Pub No. 2 | 42 | 26 |
| The Good Guys | 40 | 28 |
| Ken's Standard Service | 39 | 29 |
| Gallup-Silkworth | 35 | 33 |
| Team No. 2 | 33 | 35 |
| The Sandbaggers | 32 | 36 |
| The Spoilers | 31 | 37 |
| Chelsea Lanes | 28 | 40 |
| The Pub No. 2 | 28 | 40 |
| Pleasant Lake Resort | 27 1/2 | 40 1/2 |
| Nam Quad Corp. | 26 | 42 |

Women's games 150 and over: B. Fritz, 177-186; B. Smith, 177; C. Timmerman, 158; D. Hughes, 181-160; S. Walton, 184-177-180; P. Pardon, 180-183; J. Buku, 163; M. Sprague, 156; N. Packard, 198-151.

Women's series 425 and over: B. Fritz, 496; B. Smith, 466; D. Hughes, 473; S. Walton, 521; P. Pardon, 493; J. Buku, 423; M. Sprague, 459; N. Packard, 466.

Men's games 175 and over: D. Fritz, 198; A. Sannes, 192-215; S. Dyer, 181; D. Walton, 176-177; J. Hughes, 178; R. Buss, 173; K. Pardon, 190; E. Buku, 173; B. Bush, 176; D. Hoag, 184; E. Kotar, 214-182; J. Collins, 187-188.

Men's series 500 and over: A. Sannes, 575; D. Walton, 503; R. Kotar, 564; J. Collins, 542.

Senior House League Standings as of Jan. 19

| | W | L |
|----------------------|--------|---------|
| Chelsea Grinding | 50 | 80 |
| The Pub Bar | 46 | 84 |
| Seitz's Tavern | 45 | 85 |
| Chelsea Cleaners | 44 1/2 | 85 1/2 |
| Schneider's Grocery | 44 1/2 | 85 1/2 |
| Dana No. 1 | 44 | 86 |
| Sprauding Chevrolet | 42 1/2 | 87 1/2 |
| Sylvan Center | 34 1/2 | 95 1/2 |
| Murphy's Barber Shop | 33 1/2 | 96 1/2 |
| Wolverine Bar | 33 | 97 |
| North Lake S & S | 33 | 97 |
| Dana No. 2 | 29 1/2 | 100 1/2 |

600 series: N. Fahrner, 613.

500 series: J. Harok, 521; G. Weir, 523; L. Salyers, 564; D. Bauer, 533; E. Keezer, 538; A. Schiller, 575; G. Burnett, 537; G.

M. Rabbitt, 540; R. Hutzel, 534; J. Harmon, 520; D. Lyndon, 501.

Men's 200 games: R. Hutzel, 224; F. Klink, 210-200.

Women's 450 series: H. Morgan, 546; E. Brink, 477; P. Fitzsimmons, 476; D. Sannes, 475; J. Hutzel, 470.

Women's 150 games: H. Morgan, 201-181-164; J. Hutzel, 198; D. Sannes, 188; N. Althouse, 182; P. Fitzsimmons, 175-160; M. Riff, 171; E. Brink, 165-157-155; K. Lyndon, 163; F. Gephart, 162; E. Harmon, 158; A. Sindlinger, 153-150; D. Keezer, 150.

Old Timers League

Standings as of Jan. 16

| | W | L |
|------------------|--------|--------|
| Colonial Lanes | 49 | 31 |
| Bob & Otto | 48 | 32 |
| Nelson Realtor | 47 | 33 |
| Washtenaw Lanes | 42 | 38 |
| Hutzel Service | 41 | 39 |
| Veterans Club | 41 | 39 |
| Gloverleaf Lanes | 40 1/2 | 39 1/2 |
| Great Lakes | 40 | 40 |
| Chelsea Lanes | 36 | 44 |
| Stein & Goetz | 36 | 44 |
| Mather Co. | 34 1/2 | 45 1/2 |
| Hartman Ins. | 25 | 55 |

High team game: Bob & Otto, 87-1.

High team series: Great Lakes, 2,421.

High ind. game: H. Grossman, 225-541; P. Meneroy, 225-517.

High ind. series: W. Holcombe, 575.

Other 200 games and 500 series and over: P. Johnson, 211-522; E. Dennis, 200-549; L. Brousalis, 556; J. Zucco, 547; G. Lawrence, 544; D. Peden, 541; W. Tyrakowski, 518; G. Rohde, 511; J. Otto, 511; J. Hinds, 503; L. Hall, 506; R. Atkins, 501; R. Kinnel, 501; A. Frank,

Medicenter... a nice place to get well.

Concept

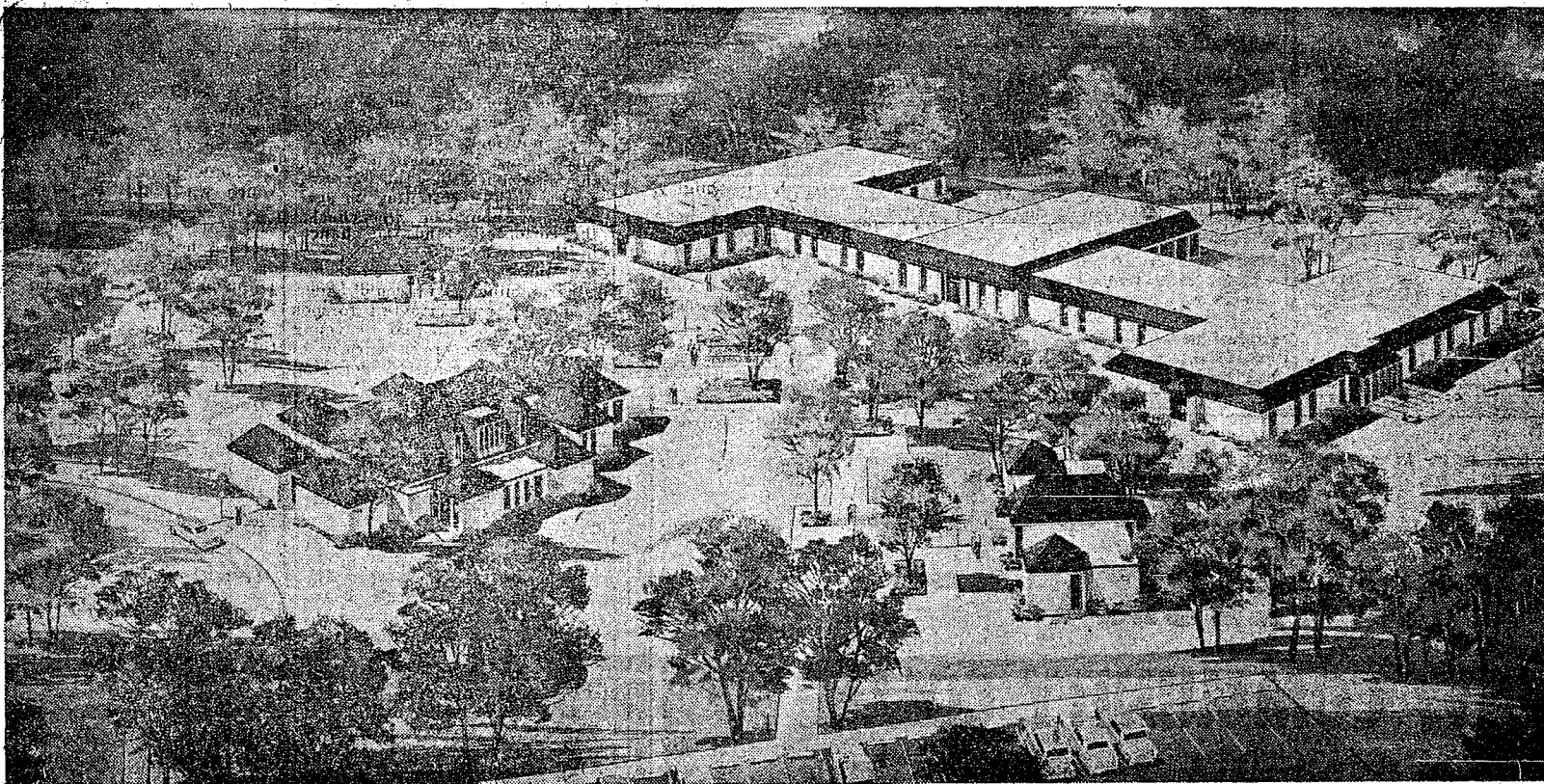
The Medicenter has been designed to provide specialized care for recuperating patients... those patients who no longer need all of the services of a hospital, but who do require some additional time for recovery. The Medicenter is neither a hospital nor a nursing home. It is a medical facility constructed and operated entirely for recuperating patients. By offering such care at approximately one-half the cost of general hospital care, the Medicenter is making a major contribution towards solving the problem of rapidly increasing medical costs.

Hospitalization today is expensive, and justifiably so, but there is a distinct need for alternatives to the high cost of hospital care. The Medicenter is a perfect example of a facility that will maintain quality and reduce cost through private enterprise.

The Facility

The Medicenter operates as a unit of Medicenters of America, Inc., under procedures developed by the national organization, and is periodically inspected to insure that the highest quality care is maintained.

The building is designed and furnished to create a pleasant, luxurious atmosphere. Each pa-



Medicenter of America/775 S. Main St./Chelsea, Michigan

tient room is spacious, colorful, fully carpeted, has individually controlled heating and cooling, and has a full private bath. Both private and two-bed rooms are available.

Other services offered by the Medicenter include beautiful lounges, physical therapy, recreational therapy, selective menus and beauty and barber shop. Telephone and television are also provided in each patient room at a slight additional charge. Visiting hours are relaxed, and visitors, including children, are welcome at any reasonable time.

Patient Care

Each patient is admitted by his own physician and remains under the care of this physician as long as he is in the Medicenter. Registered nurses are on duty 24 hours a day, 7 days a week. Other nursing and technical personnel are provided as necessary to provide the specialized recuperative care which is the Medicenter trademark. Physical therapy is a very active department, and all therapy is administered or supervised by a registered physical therapist.

Open House

You are cordially invited to visit our facilities at our open house, January 11, from 2:00 to 6:00 p.m.

MEDICENTER
OF AMERICA



A Nice Place to Get Well



IN VIETNAM: Pfc. James F. Lafontaine has been stationed in Vietnam for the coming year. He left Chelsea Friday, Jan. 2 and arrived in Vietnam Tuesday Jan. 6. His exact location and position have not yet been determined, according to his parents, Mr. and Mrs. John D. LaFontaine, 1712 Ridge Rd., who were given the following address from him. Pfc. James F. LaFontaine, 366520668, 37th Med Attn. 11AR Cav., APO, San Francisco, Calif. 96257.

SCHOOL LUNCH MENU

Monday, Jan. 26—Sloppy Joes with cheese, buns, buttered spinach, vinegar, fruit, coffee cake and milk.

Tuesday, Jan. 27—Beef roll, gravy, buttered green beans, bread and butter, orange juice, dessert and milk.

Wednesday, Jan. 28—Hamburgers, buns, buttered vegetables, fries, cherry cake, and milk.

Thursday, Jan. 29—Meat balls, tomato sauce, buttered rice, bread and butter, ice cream and cookie, and milk.

Friday, Jan. 30—Toasted cheese sandwich, potato chips, lettuce and tomato salad, hot apple goodies, and milk.

State Subsidy Lunch Program Recommended

Some \$10 million in state funds to subsidize school lunch programs in areas with high concentrations of underprivileged children has been recommended to the legislature by the State Board of Education.

This program would be used, with additional federal funds, to reimburse local school districts, in order to provide all underprivileged children with extended food services.

In addition to the school lunch program a similar proposal was made to provide state aid for food services in nursery schools in areas with also a high concentration of underprivileged children.

Under the nursery school proposal, some 15,000 children would be served at a cost of more than \$3 million.

Eight proposals in all were added this year to the 18 recommendations made to the legislature last year by the board of education.

The other new proposals are: —Enable intermediate school districts to pay fringe benefits to teachers similar to local school districts.

—Require the county treasurer to provide the Department of Education with state equalization valuation figures instead of assessed valuation.

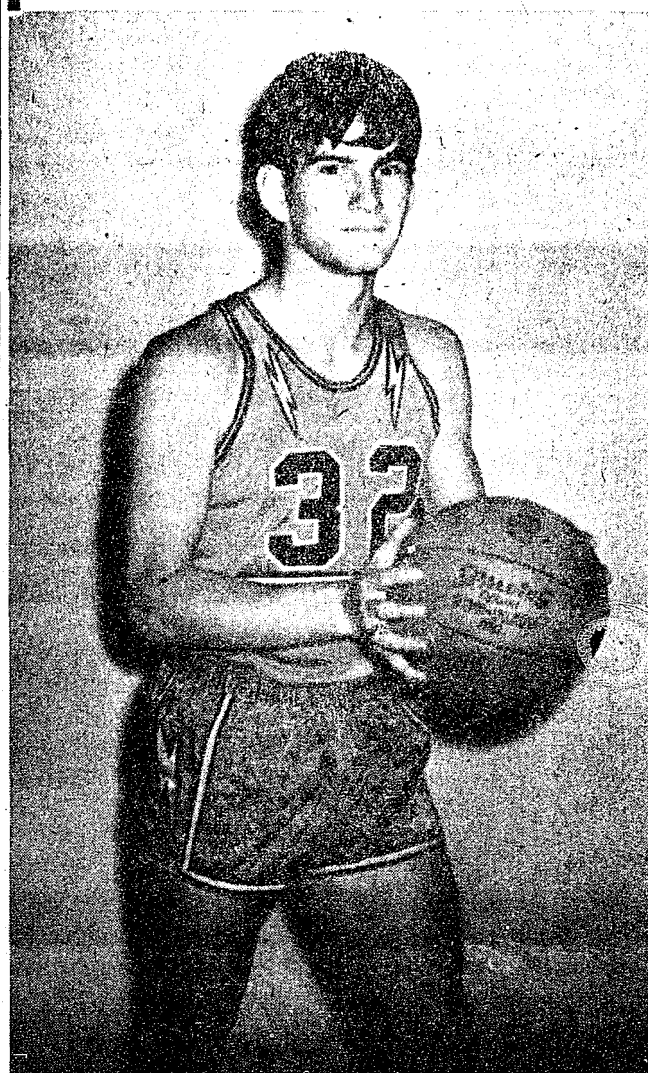
—Have the state pay election costs for first millage votes in a community college district. Repayment would be made from the first funds received when millage passes.

—Clear up annexations powers of community college districts.

—Provide for detachment of territory from a community college district as a means of promoting greater boundary adherence.

—Require an intermediate district to pay out-of-district tuition charges for students not living in a community college district.

Cager of the Week



JIM HERCULES, number 32 on Chelsea High's basketball squad, says "I'd build a home with very few hallways. There really is no need for them," explained the high school junior who intends to study architecture, "they just waste space." Jim chose architecture because of the creativity it affords. He would like to study at Albion, De Paul, or perhaps MIT. Jim, who has two sisters and two brothers, is 5'10" tall and weighs 153 lbs. He is a member of the Varsity Club and has taught baseball during the summer to youngsters through the recreation department. Jim lives at home at 14 Chestnut Dr.

Remembered on 20th Birthday

Sandy Lee Knoll celebrated her 20th birthday Wednesday, Jan. 14 in Milwaukee, Wis., with a birthday dinner sent from her parents, Mr. and Mrs. Donald Knoll, 1220 Manchester Rd., and a birthday cake also from her parents, purchased secretly by her roommates. Sandy is attending Patricia Stevens Finishing School for Girls in Milwaukee, in anticipation of graduating in June as an executive secretary and a fully qualified model.

Sandy's address is Empire Apartments, Apartment 806, 1041 E. Knapp St., Milwaukee.

STRANGE HONEYMOON—Spokane, Wash.—For a honeymoon trip, Bud Bartholomew skated from Spokane to Miami, Florida. His bride followed in a pickup truck in which they spent the night. Bud skated eight hours a day six days a week.

Subscribe today to The Standard!

Police Report AWOL, D & D, Stolen Auto

Chelsea police arrested Bobbie Fletcher, 116 Grant St., Monday Jan. 19, upon orders of the United States Marine Corps. Fletcher, 20, was absent without leave from his San Diego, Calif. base. He had been home on leave earlier in the month.

Chelsea police transported him to the Washtenaw County Jail, where he was placed in the custody of the military police Tuesday, Jan. 20.

Another arrest Monday, Jan. 19 involved Elwood Lovely, 36, 519 Lane St., who was picked up on the charge of drunk and disorderly at 5 p.m.

Lovely, who was released from custody Tuesday morning, Jan. 20, appeared in court Wednesday, Jan. 21.

Jackson police recovered a car Sunday, Jan. 18 which had been stolen from William Bennett, 313 Railroad St., Friday, Jan. 16.

Bennett discovered his car missing around 2 a.m. It had been parked in front of the Wolverine Bar with the keys left in the ignition.

It was found parked near the Club Ludwig on Ann Arbor Rd. in Jackson county with no apparent damage to the 1962 Pontiac.

A stolen car was recovered near the Wolverine Bar recently. The car, which had been stolen from the Northland Bar in Jackson was driven to the Wolverine Bar and left the same night that Bennett's car was stolen. The car stolen from the Wolverine Bar also had the ignition keys left in the auto.

Police Chief Meranuck urges all motorists to check to make sure that they have removed the keys from their cars upon parking.

It is a violation of the village ordinance as well as the state law to leave a parked car with keys in the ignition.

JV Cagers Lose Two Close Contests

Chelsea Junior Varsity lost a heart-breaking 51-54 game to Dexter last Friday, Jan. 16.

The two teams waged a terrific battle, the lead see-sawing back and forth, with neither team able to take a commanding lead.

Greg Howard was the only Chelsea cager to hit in double figures as he flipped in 22 points. Ed Koenigster hit for 8 points and Chick Lane, Jeff Schmidt, Todd Sprague and Mike Thompson each scored 4. Howard was the team's top rebounder with 7, followed by Jeff Daniels and Chick Lane who grabbed 6 and 5 rebounds, respectively.

Saturday, Jan. 17, the Junior varsity had another fourth period let-down, losing to Dundee, 49-40.

Chelsea played an improved game and looked like they might win but poor shooting led to the final downfall.

Again, only one Chelsea player hit double figures with Jeff Schmidt hitting 10. Howard followed with 9. Chelsea's board game was greatly improved as they grabbed 55. Schmidt was top rebounder with 11 and Jeff Daniels grabbed 10. Chick Lane and Greg Howard had 9 and 8 rebounds, respectively.

The Junior Varsity is now 6 and 3 on the season.

WCC Courses To Be Given In Chelsea

Washtenaw Community College will be offering "After Dinner Education" in the Chelsea area, according to Mrs. Jeanne Stock and Andrew Ford, the two instructors from the college in the Chelsea area.

Mrs. Stock will be conducting the course "Introduction to Literature: Short Story and Novel 170." This is a 3 credit college transfer class, which may be transferred for credit to any college or university.

To facilitate registration, materials and books will be at the first regular class meeting Monday, Feb. 2 from 6:30 to 9:30 at the Chelsea High School, Room 111. Students will not have to register at Auditorium College Hall in Ypsilanti if they register with the class at the first meeting.

Ford is the director of several technical classes to be held in the Chelsea area. Ford's classes will be "Blueprint Reading 102," and "Electrical Fundamentals 111."

For further information on these and other extension courses, contact either of the instructors or the Washtenaw Community College Extension Service.

Custom Furniture

and Cabinet Making

Phone 426-4784

VAN AKEN

WOODART STUDIO

925 Baker Road
Dexter, Mich.

March of Dimes Mothers March Plans Completed

Mothers will be marching Friday, Jan. 30 from 4 to 8 p.m. to collect funds for the March of Dimes, according to Mrs. Arthur (Anne) Steinaway, chairman of the annual Mothers March.

"There will be more than 70 marchers involved. Some will cover their areas during the day," notes Mrs. Steinaway, "but we stress the 4 to 8 p.m. hours."

"We've changed the hours this year to facilitate those mothers who work. Again this year we will have the streets patrolled by specially marked cars for marching mothers' protection," Mrs. Steinaway added.

The Village of Chelsea has been divided into nine districts for the march. The following are in charge of the various districts.

District I, Mrs. Brian French; District II, Mrs. Dick Stoll; District III, Mrs. Herbert Hinz; District IV, Mrs. Charles Mattoff; District V, Mrs. Tom Dunlap; District VI, Mrs. Wesley Ellenwood; District VII, Mrs. Russell Moore; District VIII, Mrs. John Dettling; and District IX, Mrs. Waldo Steinaway, Jr.

The U. S. Jaycees Annual Meeting will be held in St. Louis, Mo., in 1970. This will mark the organization's 50th anniversary, in the city where it was founded in 1920 by Henry Gitsensbier.



RECEIVES AIR MEDAL: Staff Sergeant Philip J. Cross (right), son of Mr. and Mrs. Leonard E. Cross, 139 Dewey, receives the Air Medal at Phan Rang AF, Vietnam, from Colonel Leslie J. Campbell, Jr., 315th Special Operations Wing commander. Cross, with U. S. Combat Air Forces in Vietnam, was decorated for his meritorious achievement as an aircraft loadmaster on successful and important missions completed under hazardous conditions. He is assigned to the 310th Special Operations Squadron, a unit of the Pacific Air Forces, headquarters for air operations in Southeast Asia, the Far East and Pacific area. The sergeant, who previously served at Edwards AFB, Calif., graduated from high school in 1957 in England.

There is no official connection between the U. S. Chamber of Commerce and the U. S. Jaycees, formerly the U. S. Junior Chamber of Commerce, but the two organizations co-operate in many instances.

PARTING SHOT

Dick McAuliffe hit a two-run pinch homer in the last-at-bat of the 1969 season. The blast came on July 13 two weeks before he was operated on for a knee injury.

VOTE!!

The Civitan Club of Chelsea urges all qualified voters in the Chelsea School district to exercise their rights as citizens of this country to get out and vote in the forthcoming school millage election. Whether you vote for or against the millage, let your voice and your opinion be heard.

CHELSEA CIVITANS

AFTER DINNER EDUCATION IN CHELSEA WASHTENAW COMMUNITY COLLEGE

will offer this semester the following courses at Chelsea High School beginning February 2 through 5

MONDAY, 6:30 - 9:30 p.m., FEBRUARY 2

INTRODUCTION TO LITERATURE: SHORT STORY & NOVEL 170, 3 credit hours

An introduction to the study of the short story and novel. The course is designed to give an understanding of literature through the close reading and discussion of selected works. Encouragement will be given to the student to evolve his own criteria for assessing the value of a literary work.

TUESDAY 7:00 - 10:00 p.m., FEBRUARY 3

BLUEPRINT READING 101, 3 credit hours

Fundamentals of blueprint reading as applied to the manufacturing industry. Basic drafting principles are studied as applied to specific problems. This course is designed for: pre-engineers, draftsmen, machine operators, machine repairmen, electronic technicians, inspectors, and supervisors.

WEDNESDAY 6:00 - 10:00 p.m., FEBRUARY 4

INTRODUCTORY ELECTRICITY 090, 3 credit hours

Introductory course for the student who has had no previous instruction in electricity-electronics. An introduction to electron theory, magnetism, electro-magnetism, sources of electricity, electrical units, alternating current generation, inductance, and reactance.

THURSDAY 6:30 - 9:00 p.m., FEBRUARY 5

MICHIGAN HISTORY 209, 2 credit hours

Traces the people and events through 400 years in the development of Michigan. Emphasis will be placed on the significance today of the past. (10 weeks).

REGISTRATION AND TUITION: Register on the night of the class in Chelsea High School. Tuition is \$10.00 per credit hour for district residents. If sufficient registrations are not received, the classes may be changed to another location or cancelled.

FOR INFORMATION CALL

WASHTENAW COMMUNITY COLLEGE

DEAN JOHN WOODEN

Phone: 483-5152

For the family with a lot of living (and a lot of laundry) to do...

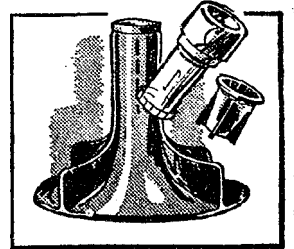
New MAYTAG young-family washer



ONLY \$230⁰⁰

with exclusive Lint-Filter Agitator and Family-Size Tub!

- Exclusive lint filter is built right into the agitator so it works where it can trap both floating and suspended lint. Lifts out for easy cleaning
- Big family-size tub handles big loads
- Automatic softener dispenser is standard luxury on all New-Generation Maytag Washers
- Positive automatic fill system ends fill problems from low water pressure
- Special delicate-fabric setting lets you wash many delicates and synthetics automatically
- Hot, warm or cold-water wash. Three water levels match water used to load size. Rugged "battleship" construction—a Maytag hallmark
- And, in case you ever need it, the great new 525 warranty—strongest in Maytag history
- Like you, we believe a young family shouldn't have to worry about laundry problems



* 5 years on transmission assembly. 2 years on complete washer. 5 years on cabinet against rust. Free repair or exchange of defective parts or cabinet if it rusts. Free installation of parts is the responsibility of selling franchised Maytag dealer within first year; thereafter installation is extra.

SEE THE NEW GENERATION OF DEPENDABLE MAYTAGS

BEAT THE PRICE INCREASE

BUY NOW and SAVE!

When our present inventory is gone the recent factory price increase will be in effect.

Open Friday Until 9 p.m. Close Saturday at 4 p.m.

FRIGID PRODUCTS

LLOYD R. HEYDLAUFF

113 North Main Street, Chelsea

Phone GR 9-6651